

WEATHER

	Min.	Max.	Precip.
Thursday, Sept. 2	45	69	Trace
Friday, Sept. 3	48	71	0.00
Saturday, Sept. 4	49	73	0.00
Sunday, Sept. 5	44	76	0.00
Monday, Sept. 6	46	75	0.00
Tuesday, Sept. 7	45	77	0.00
Wednesday, Sept. 8	58	87	0.00

The Chelsea Standard

ONE HUNDRED-SEVENTH YEAR—No. 13

12 Pages This Week

Plus 4-Page Supplements

CHELSEA, MICHIGAN, THURSDAY, SEPTEMBER 9, 1976

15c per copy

SUBSCRIPTION: \$6.00 PER YEAR

QUOTE

"Be just before you are generous."
H. B. Sheridan.

Oct. 19 Date Approved for Millage Vote

Washtenaw County Elections Commission has responded favorably to Chelsea's request for an Oct. 19 millage election date. Registration by Sept. 20 is a prerequisite for voting in this election.

The Oct. 19 millage election is a request for 1½ additional mills for one year for school operations. The election will be held at Beach Middle School from 7 a.m. to 8 p.m.

Sheriff Postill Stands Mute in Circuit Court

Washtenaw County Sheriff Frederick J. Postill stood mute at his arraignment before Circuit Court Judge Patrick J. Conlin Thursday, Sept. 2, on a charge of felonious assault entered against him by his suspended deputy, Basil O. Baysinger.

Judge Conlin entered a plea of innocent to the charge on Postill's behalf and ordered Postill's defense attorneys to prepare their pre-trial motions by Sept. 16 when a trial date will be set.

The charge stems from Baysinger's allegation that Postill attempted to choke him with a pair of handcuffs during a wedding reception brawl at Chelsea fairgrounds July 11. Baysinger swore out a citation's complaint and warrant against the sheriff July 20 at Washtenaw County District Court in Chelsea by posting \$200 as security for court costs after Washtenaw County Prosecutor William F. Delhey refused to authorize a warrant for Postill's arrest on the charge.

Postill was bound over for trial Aug. 19 following a preliminary hearing involving 4½ days of testimony from 24 witnesses before 14th District Court Judge Henry D. Arkison.



AN OBJECT OF CONTROVERSY among seemingly peaceful surroundings is this residential drug and alcohol rehabilitation center known as Dawn Farms. The Sylvan Township Taxpayer's Association had begun court proceedings to close down the facility before its board of directors voted to re-locate back in Ypsilanti township.

Controversial Dawn Farms Moving Back to Ypsilanti

A brewing controversy between the Sylvan Taxpayer's Association and Dawn Farms, Inc., was resolved Wednesday, Aug. 25, with a decision by the Dawn Farms Board of Directors to move the facility back to its former location on Stony Creek Rd. in Ypsilanti township. The decision was announced by the board's secretary, James Balmer.

Disagreement between the two parties had focused on charges of alleged mismanagement and ordinance violations brought a gainst Dawn Farms by local residents represented by the taxpayer's association.

The privately owned facility, which opened July 3 on a 12-acre site at the corner of Sylvan and Helm Rds., was developed to offer an agricultural rehabilitation program for drug and alcohol addicts. A complaint, asking for an injunction to close Dawn Farms, Inc., until a conditional use permit was obtained from the township, was filed in Circuit Court Aug. 12 by Peter Flinto, attorney for the Sylvan Township Board. The facility never countered with their application for the permit.

The township contended Dawn Farms violated the township's zoning ordinance by operating as a multiple-family dwelling in an area restricted to agricultural, single-family use. Flinto said the township's zoning ordinance provides for multiple-family use of property within the area, but a public hearing would have to be held before a permit could be granted.

First Annual Harvest Fair Date Set For Oct. 2

Chelsea's Harvest Fair has been set for Saturday, Oct. 2, from 10 a.m. to 4 p.m. in the field behind Phil Vogel's home at 6375 Werkner Rd. (on Werkner between Jiffy Market and M-52), weather permitting. In case of rain, the fair will be postponed to the following Saturday.

For those who missed earlier announcements of the event, the purpose of the fair is to bring area residents together for an exchange of tradeable goods. Each person or family will bring the fruits of their labor, set up a table or booth, and buy or barter desirable goods brought by their friends or neighbors. As the fair is not a garage sale, all items lacking in exchangeable value are to be prohibited, according to fair co-ordinators.

All people interested in participating in the Harvest Fair must call Linda Murdock, 475-2548, or Linda Ellenwood, 475-7245, as soon as possible. Intentions to participate must be known if the fair is to be a success.

As trading or selling will begin promptly at 10 a.m., and continue through the day as people come and go, participants should come early to set up.

Examples of goods which may be entered in the fair are produce and fruit, honey, eggs, canned goods (to be marked with date, name, item and name), jellies, jams, nuts, baked goods, recipes, plants, hand-sewn, knit, or crocheted articles, arts and crafts, Christmas decorations, books, dried flowers and flower arrangements, and services such as baby-sitting, hair-cuts, house-painting, and animal care.



FOUR GENERATIONS of Beemans surround Beeman in 1854. From left are Alva Beeman, his son, Orson Beeman, Sr., his son Orson Beeman, Jr., and his son, Orson (Lucky) Beeman III. background is the farm house built by Washington

Beeman Homestead Designated As Michigan Centennial Farm

A farm owned by Orson Beeman and Mary Ann Beeman, Jr., of 9043 Beeman Rd., has been designated a Centennial Farm by the Division of Michigan History.

The farm, located in Lyndon township, has been owned by the family since July 12, 1847, when it was originally purchased from Theodore Hastings by Washington Beeman, great-great-grandfather of the present owners.

When Washington Beeman first bought the land, he lived in a log cabin on the property and built a barn as his priority. Then, in 1854, he completed construction of the present farm-

house. Both the house and barn were self-designed and toiled.

In contemplating his family's history, Orson Beeman, Jr., acknowledged that as far back as he could remember, the Beemans had always been farmers. He inherited the dairy farm originally operated by his grandfather, Alva Beeman, from his father, Orson, Sr., and continued the business until June, 1976. Currently Beeman farms corn, wheat, alfalfa, and raises beef cattle.

With the exception of Orson, Jr., all other Beeman family members were born and raised on the homestead. Orson Be-

man, Jr., his wife, Mary Ann, and their two children, are at present the centennial farm's only occupants.

According to Secretary of State Richard H. Austin, whose department administers the Centennial Farm program, the program was inaugurated in 1948. Since then, more than 3,000 Michigan farms have been certified as Centennial Farms.

Certificates of recognition are provided by the Division of Michigan History in addition to large metal markers, provided by the Detroit Edison and Consumers Power Companies, commemorating the historic site.

Explains Austin, "A Centennial Farm is one which has been in the continuous possession of the same family for 100 years or more."

The Michigan History Division considers a farm to be either 10 or more acres, having estimated farm product sales of more than \$50 yearly, or less than 10 acres having estimated sales of at least \$250 yearly. A centennial farm comprises only the land and not the farm buildings, which may be remodeled or even new.

Playground Work Bee Slated at South School

South school will be the site of a work bee beginning a 9 a.m. Saturday, Sept. 18. Volunteers will gather to make necessary playground improvements with a mixture of purchased equipment and parent built equipment made of natural and recycled materials.

Along with the new accoutrements, the lower elementary playground will receive a new coat of paint and some natural structures, according to co-ordinators of the project. The upper elementary playground is scheduled for a new blacktop area for games, replacement of equipment previously taken down for the building program, an obstacle course, and a large natural climber.

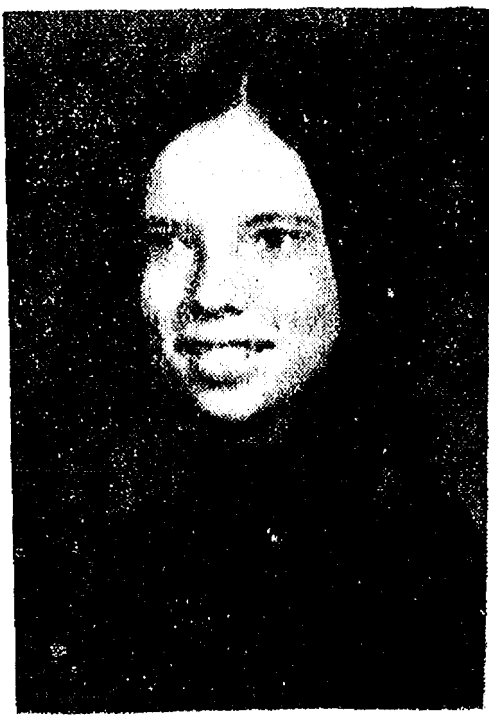
Interested area residents with a willingness to work are needed for the neighborhood project. Bring paint brushes, shovels, or any other useful tools.

Committee For Millage Organizing

The Citizens Committee for the Millage will hold an organizational meeting at 7:30 p.m. Thursday (tonight), Sept. 9 in the Board Room at Chelsea High school.

Currently, materials still demanded for a successful playground improvement are large tires, railroad ties, sections of tree trunks at least three feet long, large wire spools, utility poles, cedar fence posts, pipe, lumber, large bolts with nuts, cable, and chain.

Anyone wishing to donate any of these materials is asked to contact Susan Kelly, 475-8922.



AMY DETTLING
Amy Dettling Earns Degree at Western Michigan

Amy Dettling, daughter of Mr. and Mrs. John C. Dettling of 340 Pierce St., graduated from Western Michigan University, Kalamazoo, Aug. 20 with a BBA degree in business administration.

Golf Team Preparing for New Season

Chelsea Bulldog golf team has been practicing steadily throughout the summer in preparation for the fall golf season.

The team and Coach Pat Wade feel confident that another highly successful campaign is possible.

This year the team will be led by Captain Jeff Policht. Jeff has won three varsity awards in golf and is the only senior on the squad.

Other members who are expected to do well are Brian Lewis, Joe Ewald, Charlie Bridges, Bill Spaulding, Mike Eisele, Jeff Rabbits, Brian Nadeau, Mark Barnes and Jim Shepherd.

In its first test, Chelsea finished sixth in a strong Tecumseh Invitational and Brian Lewis had their medalist honors by shooting 78.

CHS GOLF SCHEDULE

Sept. 14—DexterH
Sept. 15—Saline, BrightonH
Sept. 21—South Lyon, MilanH
Sept. 23—Novi, LincolnH
Sept. 28—Dexter InvitationalT
Sept. 27—Brighton, LincolnB
Sept. 30—NoviT
Oct. 2—Grass Lake InvitationalT
Oct. 4—Pinckney InvitationalT
Oct. 5—Milan, South LyonS
Oct. 7—Dexter, SalineS
Oct. 10-13-14—League MeetS
Oct. 16—State RegionalsS

Teachers Help Board Delay Program Cuts

At Tuesday night's Board of Education meeting, Sept. 7, Chelsea Education Association representatives announced that Chelsea teachers will continue their extra curricular assignments without pay until the outcome of the Oct. 19 millage election is known. This makes it possible for the Board of Education to continue its programs of freshman and intramural football, girls' basketball, golf, cross country and track, cheerleading, debate, marching band and several other extra-curricular activities uninterrupted until that time.

Should the millage pass, the teachers will receive full reimbursement for the time spent in these activities. Should the millage fail, such reimbursement would be impossible. "The teachers realize they are taking a risk," said CEA

president, Pat Clarke, "but these activities represent an important part of the students' total school experience and are worth it."

"The teachers' dedication to their programs is greatly appreciated," said Board President Howard Haselschwardt. "Many of these programs, if cut at the beginning of the year, would have been impossible to reinstate even if the millage passes. They would have been lost for the entire semester."

Those extra curricular activities that have proved to be self-supporting such as varsity football and community swimming would not be affected by subsequent budget cuts regardless of the outcome of the Oct. 19 millage vote. However, the board wishes to stress the fact that spending in many other areas will be deferred until the actual amount of available funds is known.

Grid Season Opens Sept. 17 At Tecumseh

The Chelsea 1976 football season opens Sept. 17 at Tecumseh. Before then Chelsea Bulldogs led by Captains Tony Robards and Tony Houle will have been working out for four weeks. The varsity has 42 players with 41 practicing and one (Matt McClellan) recovering from a broken foot.

This Friday Chelsea will get its first taste of competition when they travel to Albion for a four-way scrimmage. This will start at 3 p.m. The field is right next to 1-94 at the second Albion exit.

Bulldog seniors and lettermen are John Adams, HB; Bruce Bennett, G; Mark Brennan, E; Bob Burgess, G; Howard Buch, E; Mike Check, HB; David Classon, T; Al Dalton, HB; Dale Headrick, G; Anthony Houle, QB; George Menge, G; Don Nadiou, E; Scott Owings, E; John Push, T; Tony Robards, FB; Mark Smyth, G; Bruce Stubbs, HB; and John Toon, HB.

Senior Rick Davis, a center, has returned after a year's absence along with end Jeff Sweet.

Juniors are Rick Beeman, C; James Bollinger, T; Rock Brandel, HB; Chuck Brodebeck, E; Leon Brown, T; Matt Fisher, FB; Bob Gottfried, G; Don Harris, C; Todd Headrick, T; Jason Lindauer, G; Gary Packard, G; Steve Pennington, HB; Jeff Powell, QB; Bandy Reinhardt, G; Dave Schrotenboer, E; Chris Smyth, E; Phil Steinhauer, T; Victor Verchereau, G; Todd Weber, E; Mike Young, HB; and sophomore tackle, Tom Bareis.

Chelsea's first home game was scheduled to be against Lincoln. But since they do not have athletics this year due to loss of their millage election, Chelsea has re-scheduled with Portland a strong Class C team from the Lansing area. This team was in the state play-offs last year and posted a 9 and 0 season.

Managers are Dave Lane and Steve Catell. Trainers are Rick Brandel and Jeff Leach.

Music Directors Hired By St. Paul Church

Two staff changes at St. Paul United Church of Christ, 14600 Old US-12, were announced Wednesday, Sept. 1, by Pastor R. J. Ratzlaff. Mary Claire Olney has been employed as organist and staff assistant, while M. Michael Suzuki was hired as Chancel Choir director.

Mary Olney, a full-time employee, will direct the three children's choirs and co-ordinate Christian education activities in addition to her duties as organist. She holds a Bachelor of Music

degree from Lewis and Clark College, Portland, Ore., and was recently awarded a Master of Music degree by the Conservatory of Music, University of Cincinnati. She is the daughter of the Rev. and Mrs. Clare Olney of Red Lodge, Mont., and will reside in Chelsea.

Suzuki is a doctoral candidate in choral conducting at the University of Michigan, and holds both bachelor's and master's degrees in music. He will serve on the St. Paul church staff on a part-time basis.

School Board Briefs

Present at a regular meeting of the Chelsea Board of Education Tuesday evening were Haselschwardt, Schafer, Hodgson, Feeney, Stirling, Tobin, Daniels, Superintendent Cameron, Business Manager Mills. Guests present were Paul Mann, and Mr. and Mrs. Gary Roderick.

Meeting called to order at 8:00 p.m. by President Haselschwardt. Bids were opened by Secretary Schafer for the interest to be paid on \$900,000 Tax Anticipation Notes. Detroit Bank & Trust Co., 3.41% plus \$15 premium; First Security Bank of Iowa, 4.00%; Michigan National Bank of Flint, 3.45%.

The board authorized the transfer of \$1,000 to the Athletic Board as an advance to start the school year.

The resignation of Phil Bareis as athletic director was accepted, effective upon finding a suitable replacement.

A discussion was held regarding the millage election of Oct. 19. An organizational meeting for the millage election campaign will be held on Thursday, Sept. 9, at 7:30 p.m. in the Board Room. All interested residents are urged to attend.

Meeting adjourned at 11 p.m.

Established 1871 **The Chelsea Standard** Telephone 475-1371

Excellence Award By Michigan Press Association
1951-1952-1960-1964-1965-1966

Walter P. Leonard, Editor and Publisher

Published every Thursday morning at 300 North Main Street, Chelsea, Mich. 48118, and second class postage paid at Chelsea, Mich., under the Act of March 3, 1879.

Subscription Rates (Payable in Advance)

In Michigan:		Outside Michigan:	
One Year	\$9.00	One Year	\$9.50
Six Months	\$5.50	Six Months	\$6.00
Single Copies	\$.20	Single Copies	\$.25

MEMBER
NATIONAL NEWSPAPER
Association - Founded 1885

National Advertising Representative
MICHIGAN NEWSPAPERS, INC.
257 Michigan Ave.
East Lansing, Mich. 48823

Uncle Lew from Lima Says:

DEAR MISTER EDITOR:

I was reading where folks with CB radios is getting more numbers to talk on. I don't know nothing about radio and I get that mixed up, but that appears to a practical solution to a big problem. If one number fills up, you just move to a higher number. If that works for radio, it ought to do fine for people. Fervidly you don't run out of numbers.

Ever now and again you see by the papers where the world is filling up with people. The birth rate may be dropping in this country, but there's plenty of new mouths to feed in other places. With the overall world population growing by 33 million a year we're going to have to look for more numbers soon or late. I ain't no gold medal winner with fingers, but it's a simple fact that we're going to run out of burying ground and standing room about the same time.

Mister Editor, when me and my old lady got married and moved out here the nearest neighbors was four miles away, and now there's 15 houses between us and them. Like the old preacher said, the good Lord ain't making no more land, so it looks like we're going to squeeze one another to death if we don't run out of sompin to eat and starve first. And I ain't seen where anybody has come up with any higher numbers to put people. As for this business of settling Mars, the way I got that fingered is, Mars really is where Earth is or where it's going to be, and there ain't no long-term future in either one.

Glitting back to the CB radio, a piece I saw the other day said 1978 is going to be a year of sunspot activity, and it said sunspots cause radio signals to bounce back to the earth instead of heading off in space. It looks to me like 1978 is going to be some kind of year for CB. With all the talking on all the numbers, everything that's said will be repeated when it bounces off them sunspots. With 15 million CB radios in use now and the number going up regular, they're going to come up with a heap more numbers to give all of em a chance to talk. Personal, I got no interest in talking on the radio now, and in 1978 I figure all them CB numbers will sound like feeding time in the henhouse.

Sneaking of numbers, you can count the happy mamas this time of year. With all the children go-

ing back to school and from under mama's feet, she'll have time to put her feet up for that second cup of coffee. I reckon Labor Day comes at a good time for wimmen with growing children, Mister Editor, cause after picking up behind em and trying to keep em fed all summer, they need a day to rest from their labors. They might even get a chance to catch up on telephone gossip. You remember the telephone, it's that thing everybody talked on before CB.

Considering quick changes in the world, I see the \$2 bill ain't one. I can't figure why folks won't use this bill that's supposed to take the place of the \$1, unless everything has gone to \$2.99. Maybe when we get the \$1 coin to use in the drink machines, we'll start spending \$2 bills for the cheese crackers.

Yours truly,
Uncle Lew

Dial-A-Garden Topics Listed

It's not even time to harvest pumpkins, but it is time to think spring! Fall is the time to plant spring flowering bulbs. To promote spring dreaming, and help sort out the hundreds of tulips and other bulb varieties available in local garden centers, Dial-A-Garden is beginning a special three-week series on bulbs, beginning Monday, Sept. 13.

Dial-A-Garden, the system of pre-recorded, daily gardening tips is sponsored by the Washtenaw County Co-operative Extension Service. The system is in operation 24 hours per day, 7 days per week. Interested persons are invited to call 971-1122 at their convenience and receive timely, up to date gardening information.

Next week's Dial-A-Garden topics are:

Friday, Sept. 10 and week-end — "Digging Corns and Tubers for Winter."

Monday, Sept. 13 — "Introducing Bulbs."

Tuesday, Sept. 14 — "Hyacinths and Crocuses."

Wednesday, Sept. 15 — "Midseason Tulips."

Thursday, Sept. 16 — "Late Tulips."

Please Notify Us
In Advance of
Any Change in Address

Howell Livestock Auction
Starts 1 p.m. Every Monday
Mason 676-5400
The Wise Owl Says Shid to Howell
Phone 546-2470. Bin Franklin
Market Report for Sept. 6

CATTLE
Bulk Cattle, Choice Steers, \$36 to \$38
Few High Choice Steers, \$38 to \$39
Cattle, Choice Heifers, \$34 to \$36.50
Fed Holstein Steers, \$30 to \$34
Ut-Steer, \$30 and down.

COWS
Heifer Cows, \$28.50 to \$30
1st-Cow, \$28 to \$30
Canner-Cutter, \$18 to \$24
Fat Beef Cows, \$24 to \$26

BULLS
Heavy Bologna, \$30 to \$35
Light and Common, \$30 and down.

FEEDERS
400-600 lb. Good-Choice Steers, \$35 to \$40
600-800 lb. Good-Choice Steers, \$32 to \$38
300-600 lb. Good-Choice Heifers, \$30 to \$36
300-600 lb. Holstein Steers, \$27 to \$30
500-800 lb. Holstein Steers, \$26 to \$30

CALVES
Prime, \$50 to \$60
Good-Choice, \$40 to \$50
Heavy Dressed, \$22 to \$35
Cull & Med., \$15 to \$22
Calves going back to farms sold up to \$45

SHEEP
Shorn Slaughter Lambs:
Choice-Prime, \$40 to \$42
Good-Utility, \$35 to \$40

Woolled Slaughter Lambs, Springs:
Choice-Prime, \$35 to \$36
Good-Utility, \$32 to \$35
Slaughter Ewes, \$10 to \$18
Feeder Lambs, All Weights, \$35 to \$41

HOGS
250 to 300 lbs., No. 1, \$43 to \$44
200-250 lbs., No. 2, \$43 to \$44
Heavy Hogs, 250 lbs. up, \$38 to \$42
Light Hogs, 200 lbs., \$30 to \$40

SWINE
Fancy Light, \$37 to \$37.75
2nd-5th, \$36 to \$37
600 lbs. and up, \$35 to \$36

GOATS AND STAGS
All Weights, \$31 to \$38

Feeder Pigs
Per Head, \$20 to \$30
Est. 40 lb. pigs, \$32 to \$34

MAY
Cut Culling, per bale, \$60 to \$1.00
Cut Culling, per bale, \$1.00 to \$1.50

STRAW
Cut Bale, 40c to 75c

COWS
Grade Dairy Cows, (quintile) \$350 to \$600
Feeder Beef Type Cows, \$250 to \$350

MICHIGAN MIRROR

By Warren M. Hoyt, Secretary, Michigan Press Association

It's a Moneymaker

Still a real winner, Michigan's

lottery. State officials declare our own "chance-of-a-lifetime" contest tops in the country for 1975-76. Michigan's lottery set an all-time sales record, taking in \$225.7 million — \$90 million more than the previous 12-month record.

Of that total, nearly \$107 million went into the state's general fund. The remainder went for prize money and operating costs.

That means millions and millions traded 50c or more for the long-shot chance of winning up to \$1 million.

What happens to those who hit it big?

Some are targets of down-and-outters who want a handout. Others are asked for loans or have trouble warding off salesmen who figure they should invest in what-

ever. And a few even have had their homes burgled after winning big prize money.

But Dave Hansen, chief of public relations for Michigan's lottery bureau, says he's heard of no "really bad experiences, either here or in other states."

One major deterrent, he notes, is the fact that the big winners—those who come up with the \$1 million tickets—don't get their winnings all at once. Instead, the prize is doled out in annual chunks of \$50,000 for 20 years.

Lottery bureau officials figure about a million people regularly play the game, buying their tickets at any one of the nearly 8,000 sales agencies across the state.

Michigan folks aren't the only ones who try for Michigan's big prize money either. Top ticket seller for 1975-76 was the Stateline Supermarket in Niles, just a few

miles from the Michigan border. That agent, according to the lottery bureau, sells "lots of tickets to those from out-of-state."

The average lottery ticket agent sold \$500 worth of tickets each week for the 1975-76 year.

Hunters Abound

Ecology, yes. Hunting, no. Seems like the two thoughts would go together. But they don't when you're counting Michigan deer hunters.

It seems that many people generally agree that a spin-off of the recent ecology movement has been an increase in the anti-hunting sentiment," says Lawrence A. Tye, head of the Department of Natural Resources office of surveys and statistics.

"But to date I cannot detect a falling off in the participating in hunting."

Take deer hunting as the example. The 1970 Michigan census was up 12.2 percent from 1960. But in 1970 there were 40.5 percent more deer hunters than 10 years earlier. Tye reports also that the state's estimated one million hunters have expanded their ranks by nearly 10.3 percent since 1970—and the population rose only 4.5 percent during that same period.

Four Per Person

Are you a typical bookworm? The State Library reports that the average Michigan resident borrowed four library books last year. And the average library user was under 50, married, a high school graduate and has a white collar job.

One more tidbit of book-ish knowledge: The Michigan State Library was an independent agency from 1928 until 1965, when it became a division of the Department of Education.

Atlas Coming

Want to know which Michigan counties have the most wheries? Or how fast colors progress northward from the Ohio border? Or how long it takes—going 55 mph—to reach Marquette from Lansing? Check the upcoming state atlas, being put together by Michigan State University's department of geography.

Abandoned Michigan lumber towns, current art and music centers, sites of sculptures across the state, all are included in this "Atlas of Michigan," to be available for about \$25 in a year.

The publication is reported to be the first "broadly scoped" Michigan atlas since 1873.

Paul's Evangelical church, members of the church and congregation honored him with a dinner on Sunday, following the morning service.

The Rev. W. H. Skentelbury of Clinton has accepted a call to the pastorate of the local Congregational church and will assume his new duties next Saturday morning.

On Tuesday evening, Sept. 15, the Chelsea Methodist Home which has been a vital part of community life for the past 36 years, will host an open house for area residents. Visitors are invited to view the new wing addition known as Kresge Hall. The Home was located here because of the generous gifts of the late Frank P. Glazier.

At the request of the State Department of Health, the village council took action at their regular meeting on Tuesday night to employ an engineer to investigate and correct the defects in Chelsea's sewage system.

Willis Mayer, son of Mr. and Mrs. George Mayer of Chelsea, has enlisted in the U.S. Naval Reserve for flight training.

FALL LAWN SEEDING IS BEST

If you've been thinking about planting a new lawn around your home, late August or early September is the time to turn thought into action.

According to turfgrass specialists at Michigan State University, Aug. 15-Sept. 15 is the best time to establish a new lawn in Michigan.

You may also seed a new lawn in the spring, the experts note, but you're likely to have more trouble with weeds then.

JUST REMINISCING

Items Taken from the files of The Chelsea Standard

4 Years Ago...

Thursday, Sept. 14, 1972—

Mr. and Mrs. Walter Cordin and their three daughters, Laurie, 15, Nikki, 11 and Tamara, 6, were the unwelcome victims of a hijacking as they were aboard a Delta flight from Detroit to Miami, Thursday, Aug. 31.

Chelsea High School Band will make its first performance of the season Friday, Sept. 15 as the football team takes on Mason. Lee Ferguson, son of Mr. and Mrs. Lee Ferguson, will debut as Chelsea High's first drum major.

Chelsea Medical Clinic has a new general practitioner added to their ranks. Dr. Paul Gerigk, recently of Saline and Hamburg, Germany, has joined the staff.

Officer Bruce Sibert of the Chelsea Police Department has announced that he will resign his post Friday, Sept. 15, in order to attend school for admittance to the Michigan State Police.

Chelsea Education Association officially rejected the last proposal of the Board of Education and voted to proceed to fact finding at a general meeting on Monday. This action was taken in spite of the School Board's ultimatum that unless their offer was accepted by noon Wednesday, it would be withdrawn from the table.

14 Years Ago...

Thursday, Sept. 13, 1958—

Judy Weinkauf, Chelsea High school senior class candidate, was selected by the judges and announced "Queen of the 1958 Chelsea Community Fair."

In the fat stock sale at the Chelsea Community Fair Thursday evening, the 10 Angus steers in the Chelsea Steer Club brought their owners from 33 to 45 cents per pound.

"Together We Win" was inscribed on the side of the Roberg's Corners Herdsmen 4-H club float which was awarded first prize of \$25 in the Community Fair parade Saturday. The float was entered in the youth and school category.

At Chelsea High school cafeteria next Wednesday, 8 p.m., interested citizens of the school district will decide the fate of the Chelsea PTA. If a president is elected for the group, the PTA will continue. However, if no president is elected,

the organization will cease to exist and the meeting could be come an organizational meeting for one of two new parent-teacher groups in the Chelsea schools.

In the Kiddies Parade for children Wednesday evening, first place to the group went to "Ma and Pa Kettle at home on the farm." Ronnie Sweeney headed up the party while his brothers and cousins "by the dozens" completed the group. They were Ricky, Randy and Rodney Sweeney and Pamela Barry and Judy Czarniecki.

24 Years Ago...

Thursday, Sept. 11, 1952—

Enrollment in the kindergarten of the Chelsea Public School skyrocketed to an all-time high of 107 with at least 10 registrations still expected. This is an increase of 30 over last year's opening day registrations.

Harvey Fischer, chairman of the electricity committee of the Community Fair Association, was told at Tuesday night's meeting in the Municipal building, to proceed with arrangements for having permanent transformers installed on the fairgrounds, thus insuring sufficient power for all electricity needs.

Congressman Charles E. Potter, representative from the 11th district, and Republican candidate for U.S. Senate from Michigan, will be in Chelsea next week to speak at the Chamber of Commerce meeting in St. Mary's Hall.

Following the meeting of the Chelsea Agricultural Schools Board of Education Tuesday night, it was announced that John Griffin, Chelsea High school principal, has been invited by Lee Thurston, state superintendent of public instruction, to be a member of the Committee on Education for Home and Family Living for the school year ending July 30, 1953.

Chelsea School Superintendent Charles Cameron and Elementary Principal Basil Shell will speak of problems confronting teachers and parents to elementary PTA members at the first meeting of the season to be held Wednesday.

34 Years Ago...

Thursday, Sept. 10, 1942—

As a surprise for Rev. P. H. Grabowski, who has completed 20 years of service as pastor of St.

Ann Arbor Track Club Announces Fall Schedule

The Ann Arbor Track Club will continue its popular program of running and walking activities this fall with several cross-country and road runs beginning Sept. 5 and continuing through early January.

On Sept. 12, 19 and 26, 1/2, 1 and 3-mile runs will be held at the Pioneer High cross-country course beginning at 2 p.m. In celebration of National Jogging Day on Oct. 10, the club will host a 1/2-mile and 1-mile walk and run on a mile loop around Research Park at 2 p.m.

Other "Fun Run" activities planned for the fall season include a Pumpkin Run on Oct. 31 at Huron High, the club's annual Turkey Trot on Nov. 7 along Whitmore Lake Rd., north of Ann Arbor, a Holiday Tree Run on Dec. 12 at Gallup Park, and a Polar Bear Run on Jan. 2 at Huron High. A small entry fee is requested for the Pumpkin, Turkey and Holiday Tree events.

For a complete schedule of events, dates and starting times, send a self-addressed and stamped envelope to Elmo Morales, 2112 Arlene, Ann Arbor 48103, or phone 761-3334 for information.

Frank Durvey drove America's first successful gasoline-propelled motor vehicle through the streets of Springfield, Mass., on Sept. 21, 1893. Just three years later, the Durvey Motor Wagon Company became the country's first automobile manufacturer. In 1896, when others were still building experimental cars, Frank and his brother Charles were already manufacturing, advertising and selling the practical and rather sophisticated vehicle that bore their name. One of the Durveys' 1896 mass production cars is among the 200 automobiles that trace America's motoring history at Henry Ford Museum.

AMERICAN LEGION

POST 557, DEXTER

FISH and CHICKEN FRY EVERY FRIDAY

5 p.m. to 8 p.m.
AMERICAN LEGION HOME, DEXTER

CHICKEN . . . \$2.75

FISH . . . \$2.25

Children 12 years and under, 1/2 price

All You Can Eat!

PUBLIC WELCOME

Organ Music By Dick McInnis

6 to 11 p.m.

for sing-a-long and dancing.

Advertise Your Auction in THE CHELSEA STANDARD

BEEF SALE!

BEEF FRONT QUARTER . . . 170 Lbs. **69¢**

Cut, Wrapped, Frozen — Ready for Pick-Up

- SUMMER CUT -

8 Pot Roasts	3 Swiss Steaks	12 lbs. Beef Short Ribs
8 Chuck Steaks	18 Rib Steaks	6 lbs. Stew Beef
		75 lbs. Hamburg

and more

CUTTING STATEMENT FURNISHED

SPECIAL PRICES

Hot Dogs, all beef . \$.79	Pork Loins . . . \$1.19
Bulk Hamburger . \$.79	Bologna . . . \$.79

- EXTRA SPECIAL -

HICKORY SMOKED **SLAB BACON** . . . 1 lb. **98¢**

CUSTOM SLAUGHTERING and PROCESSING

HOME FREEZER MEATS Wholesale - Retail

NO WAITING

ORDERS READY TO TAKE HOME

We Accept Federal Food Stamps

Discount to Civic Groups

PHONE 426-8466

DUNBAR'S

8083 MAIN ST., DEXTER

DEXTER LOCKER

PAUL DUNBAR, OWNER

WASHTENAW COMMUNITY COLLEGE AND CHELSEA PUBLIC SCHOOLS

OFFER CLASSES BEGINNING SEPTEMBER 13, 1976

AT CHELSEA HIGH SCHOOL

FALL SEMESTER 1976 — CLASSES BEGIN MONDAY, SEPT. 13, 1976
REGISTRATION 6:30-7 p.m. PRECEDING FIRST CLASS TIME ON SCHEDULED DAY
REGISTRATION ALSO ACCEPTED HURON RIVER CAMPUS, ANN ARBOR
THROUGH SEPTEMBER 7TH, \$14.00 PER CREDIT HOUR PLUS
APPLICATION AND RECORD FEE FOR NEW STUDENTS . . . \$10.00

COURSE NUMBER	TITLE	CREDIT HOURS	DAYS	HOURS	RM.	NO.
ACC 091	Fund./Accounting	3	TH.	7-10 p.m.	113	
ART 101	Drawing & Painting	3	WED.	7-10 p.m.	113	
BIO 105	Medical Terminology	2	TU.	7-9 p.m.	111	
BPR 100	Blueprint Rdg./Construction	2	TU.	7-9 p.m.	111	
BPR 101	Blueprint Rdg./Machine Trades	3	WED.	7-10 p.m.	111	
ENG 111	English Composition	3	TU.	7-10 p.m.	113	
ENG 160	Intro. To Literature	3	WED.	7-10 p.m.	113	
EC 211	Principles Economics	3	TU.	7-10 p.m.	112	
GB 111	Business Law	3	MON.	7-10 p.m.	112	
HST 101	Western Civ. To 1600	3	TH.	7-10 p.m.	111	
MTH 039	Basic Math	3	WED.	7-10 p.m.	112	
MTH 090	Occupational Math	3	WED.	7-10 p.m.	112	
MTH 097A	Intro. Algebra	3	WED.	7-10 p.m.	112	
MTH 097B	Intro. Algebra	3	WED.	7-10 p.m.	112	
MTH 102	Computer Programs/Basic	3	WED.	6-10 p.m.	112	
MTH 136	Triangle Trigonometry	1	WED.	7-8 p.m.	112	
MTH 148	Computer Games	1	WED.	6-7 p.m.	112	
MTH 169A	Intermediate Algebra	3	WED.	7-10 p.m.	112	
MTH 169B	Intermediate Algebra	3	WED.	7-10 p.m.	112	
MTH 177	Trigonometry	3	WED.	7-10 p.m.	112	
MUS 160	Music Appreciation	3	MON.	7-10 p.m.	111	
PHO 090	General Photography	2	TU.	7-10 p.m.	114	
PHS 142	Environmental Science	4	TU.	7-9 p.m.	118	
PSY 100	Intro. Psychology	3	TH.	7-10 p.m.	112	
PSY 150	Industrial Psychology	3	WED.	7-10 p.m.	114	
SPH 100	Pundamentals/Speaking	3	MON.	7-10 p.m.	114	
SS 105	Women And The Law	1	TH.	7-10 p.m.	TBA	

Directed Study Using Programmed Materials.

Seven week course BEGINNING October 1, 1976

NOTE: MINIMUM OF 10 STUDENTS REQUIRED FOR ON-GOING CLASS—
REGISTER EARLY!!

THIS IS A GOOD TIME TO

Refinance Your Limited Term Land Contract

● Refinance now while rates are favorable. Mortgage rates are expected to increase over the next two years.

● Receive title to your property.

Bring your land contract to any of the eleven offices of Ann Arbor Federal Savings for refinancing or call 769-8300 for information.

ANN ARBOR FEDERAL SAVINGS

11 OFFICES TO SERVE YOU IN ANN ARBOR, BRIGHTON, CHELSEA, DEXTER, MANCHESTER, SALINE, YPSILANTI

MEMBER FDIC



Mr. and Mrs. Ricky Sweeny

Lola Augustine, Ricky Sweeny Speak Vows in St. Mary Church

Lola Ann Augustine, daughter of Mr. and Mrs. Dale R. Augustine of 20331 Jerusalem Rd., wed Ricky Delano Sweeny, son of Mr. and Mrs. Franklin Sweeny of 20412 Jerusalem Rd., Saturday, Sept. 4, in St. Mary Catholic church. The 10 a.m. ceremony was conducted by the Rev. Father Fortunato Turati.

For her wedding, the bride chose a floor-length ivory gown trimmed with lace. She wore a headband of red and white sweetheart roses mingled with baby's breath, and carried a bouquet of white roses encircled by red sweetheart roses and baby's breath.

Diane Grant served as maid of honor. She appeared in a floor-length floral gown of pink and blue, and held a bouquet of white daisies.

Ernest Mallory of Ann Arbor was best man.

Following the marriage ceremony a reception was held at the home of the bride's parents.

The newlyweds will honeymoon in the southwestern United States. Upon their return, they will reside in Ann Arbor.

The former Miss Augustine is a 1975 graduate of Chelsea High school. Mr. Sweeny also graduated from Chelsea High school in 1975.

Keith Bradburys To Be Honored on 25th Anniversary

Mr. and Mrs. Keith Bradbury of 10195 Easton Rd. will celebrate their 25th wedding anniversary with an open house from 2 to 5 p.m. Sunday, Sept. 12, to be given by their children: Terri and Karen Bradbury, and Mr. and Mrs. Kevin Bradbury.

The couple married Sept. 14, 1951 in Pinckney. Mr. and Mrs. Bradbury are members of Dexter United Methodist church and Washtenaw County Farm Bureau.

Please Notify Us In Advance of Any Change in Address

Woman's Club Fall Season Opens Sept. 14

A "welcome back" punch hour will kick-off the 1976-77 season for the Woman's Club of Chelsea. The event will be held 6:30 p.m., Sept. 14, at the home of Mrs. Robert German.

Assisting as hostesses for the punch and pot-luck will be Mrs. David Strieter, Mrs. Elwin Barth, Mrs. William Scholz, and Mrs. Gifford Johnson.

A silent-auction has been planned for the evening's entertainment, and each member is asked to contribute a decorative or useful item for the sale.

William Fritz, Srs., Will Observe 50th Anniversary

Mr. and Mrs. William J. Fritz, Sr., of Whitmore Lake, will be honored at a 50th Wedding Anniversary open house Saturday, Sept. 11, from 2 to 4 p.m., at 74 Schrum Dr., Whitmore Lake.

The event will be hosted by their three sons and their sons' families, Mr. and Mrs. William J. Fritz, Jr., of Whitmore Lake; Mr. and Mrs. Donald E. Fritz of Chelsea; and Mr. and Mrs. Edward Fritz of Fenton; and their daughter and her family, Mr. and Mrs. Jerry D. (Marilyn) Haynes of Whitmore Lake.

The couple married Sept. 11, 1926 in Ann Arbor, and lived there all their married life except for a seven-year break in residence when they owned a resort at Houghton Lake. Mr. Fritz is now retired.

Both are members of St. Paul Lutheran church, Hamburg, and actively pursue their hobbies of gardening, fishing and visiting their family members.

Mr. and Mrs. Fritz have nine grandchildren and two great-grandchildren.



Mrs. David R. Bird, Jr.

Karen Sullivan, David Bird, Jr., Wed Friday at St. Mary Church

Karen Cecelia Sullivan, daughter of Mr. and Mrs. Charles E. Sullivan of 19880 Lehman Rd., married David Russell Bird, Jr., son of Mr. and Mrs. David R. Bird, Sr., of Mt. Clemens, at 6 p.m. Friday, Sept. 3, in St. Mary Catholic church, Chelsea. The Rev. Robert Balser conducted the ceremony before 250 guests.

Organist James Fenn accompanied vocal soloist Pat Knickerbocker, who sang "Wedding Song" and "The Lord's Prayer" as the couple met to exchange their marriage vows.

For her wedding, the bride chose a high-fitted and slightly flared white polyester gown with a chiffon overlay and v-shaped chiffon inserts in the bodice front and back. Her costume was accented with a lace stand-up collar and short, puffy sleeves. A chapel-length train and floor-length illusion veil completed the effect of swirling softness. The bride carried a bouquet of white roses, stephanotis, and ivy.

Kathleen Hein of Newberry served as maid of honor. She appeared in a floor-length, A-line, blue floral print, voile dress on a pastel blue background. The dress was fashioned with short flowing sleeves and an empire waistline. A short cape with a high stand-up collar complemented the gown. She held a bouquet of sweetheart roses, which matched her dress, in a circle of white daisies.

Bridesmaids for the occasion were Diane Bird of Mt. Clemens, sister of the bridegroom; Janice Krupitzer of Clawson; and Marie Sullivan of Chelsea, sister of the bride. Their dresses were styled to match the gown worn by the maid of honor, but varied in shades of pink, green, and yellow. They carried bouquets of sweetheart roses, colored to match their dresses, encircled by an arrangement of white daisies.

For her daughter's wedding, Mrs. Sullivan wore a pastel blue floor-length dress with long sleeves and co-ordinating bolero jacket.

Mrs. Bird was attired in a floor-length aqua dress with a matching long-sleeved jacket.

James Wolf of Detroit was best man. Ushers were Donald Sullivan of Chelsea, brother of the bride;

Timothy Sapak of Saginaw; and Dennis Hardt of Mt. Clemens.

Following the wedding ceremony, a reception was held at the Chelsea Rod and Gun Club, hosted by the bride's parents.

The newlyweds will honeymoon in Canada, then return to Michigan to spend a few more days at Mr. Bird's parents' cabin on the Muskegon River. In mid-September, they will assume residence at Lake Superior State College.

The former Miss Sullivan will be a senior at Lake Superior State College, Sault Ste. Marie, where she will graduate in May with a degree in business administration. Mr. Bird, also a senior at Lake Superior State College, is expecting his degree in May in environmental science.

The first big-city use of central electric power came on September 4, 1882 when New York City's Pearl Street Generating Station started moving current to surrounding buildings. Thomas Edison owned his Edison Electric Illuminating Company for business on Pearl Street with just 88 customers and a total capacity of only 400 lamps. For safety's sake, it was powered by just one of its two jumbo dynamos. A scale model of the Pearl Street Station is now on display in Henry Ford Museum. In Greenfield Village, the jumbo dynamo that was originally used there is house in the Edison Illuminating Company building.

Due care is a legal phrase but the lack of it causes the death of many Americans every year.

Magic Mirror Beauty Salon

Open Tuesday thru Friday
9 a.m. to 9 p.m.
Saturday, 8 a.m. to 3 p.m.

PHONE 665-0816

DeVoy - Clark Vows Spoken In Lyndon Hall

Donna Mae DeVoy of Brighton, daughter of Mr. and Mrs. Guy Wages of Flushing, O., married Orson Dean Clark, son of Mrs. Mary Clark of 11437 Boyce Rd., Grass Lake, Aug. 7, in Lyndon Town Hall. Judge Lawrence Lindemer officiated at the ceremony.

Helen Brown of Howell served as matron of honor, and Bobby Long of Stockbridge was best man.

Following the wedding, a reception was held at Lyndon Town Hall for 50 guests.

The couple traveled through the Smokey Mountains and along Skyline Dr. on their wedding trip.

Upon their return, they were honored at a neighborhood shower given by Mrs. Tom Lancaster and Mrs. Jay Hopkins Sunday, Aug. 29, at Lyndon Town Hall with 60 guests in attendance. A cake, decorated by Mary Jo Bott, and ice cream were served.

The former Mrs. DeVoy is a 1960 graduate of Freeport High School, Freeport, O., and is employed by the stenographic department of Citizens Insurance Co. of America, Howell.

Mr. Clark is a 1953 graduate of Chelsea High school, and is a self-employed farmer.

Inverness Ladies Golf Season Ends With Fun Day

Fun was the name of the game thanks to Dorothy Miller who altered the course by changing the holes. One example was "Tee off from No. 4 to No. 1 green." Some of the fun prizes went for high net, closest to fence on No. 7, out of bounds, lost ball and a hidden prize which you needed to be there to appreciate.

On the more serious side was net won by Polly Wint with a 25, closest to pin on No. 1 by Jean Lewis; closest to pin on No. 5, Adeline Barstow; low putts of 13 went to Polly Goins, Lois Voita, Dorothy Hale and Ellie Reynolds. Most pars for the year went to Polly Goins, 17, in the first flight; Jeanette Smith, 6, second flight; Eileen Brown, 3, third flight.

A pot-luck luncheon was hosted by Eileen Brown, Mille Townsend and Doris Max.

Alfred Gross Has 39 Years Kiwanis Perfect Attendance

Alfred Gross, the only charter member of the Dexter Kiwanis club who has been a continuous member since the club was formed, was presented with his attendance tab Tuesday evening for 39 years of perfect attendance. Members of the club gave him a standing ovation, when the tab was presented by President Joseph Medrano.

Treasurer Carl Willoughby made two presentations: He gave the license plate for the trailer that is to be used as a "sausage wagon" to Harvey Kullbert, who has served so many times as chairman of the sausage sandwich concession and he gave the registration card for the vehicle to David Gillies, secretary of the club.

While work is progressing on remodeling the vehicle, it is not definite whether or not it will be ready for the two-day Cider Festival in October in Dexter. Thomas Stringer and Charles Hurst will be co-chairmen of the sausage sandwich concession at the time with Harvey Kullbert as "advisor."

Five members of the Pinckney Kiwanis club attended as an inter-club.

The Dexter Kiwanis club is donating \$250 to the Dexter Area Historical Museum.

On Sept. 14, Mrs. Arthur Polner will speak to the club on the Dexter United Way campaign.

Meetings are being held at St. James church dining room during September.

HOUSE OF ORIENT BEAUTY SALON

107 W. MIDDLE PH. 475-8196

Starting September
TUESDAY ONLY
SENIOR CITIZEN
DAY

ALL PERMS
\$5.00 Off Reg. Price
SHAMPOO & SET
\$4.00



CLEARANCE ON ALL WIGS!
\$4.00 Off - Now Only \$12.00

Stop By or Give Us A Call
Carolyn, Charlotte and Nola

CARPET REBIRTH

Give your carpet a new lease on life
by cleaning it regularly.

JET SPRAY CARPET CLEANING

Use Your Phone 761-3025 or 475-1509
BankAmericard Ask for John Lixey.

COUNTRY CRAFTIQUE

103 N. MAIN, CHELSEA PH. 475-2512

FALL CLASSES

NEEDLEPOINT:

Tuesday Mornings 9:30 to 11:30
Tuesday Evenings 7:00 to 9:00

BARGELLO:

Wednesday Mornings 9:30 to 11:30
Wednesday Evenings 7:00 to 9:00

MACRAME:

Wednesday Afternoons 1:00 to 3:00
Monday Evenings 7:00 to 9:00

CROCHET:

Thursday Mornings 9:30 to 11:30
Thursday Evenings 7:00 to 9:00

COME IN AND SIGN UP!



VILLAGE BEAUTY SALON

107 N. Main St., Chelsea

Sept. 1 thru Sept. 30

MON. - Blow Dry Styling . . . 20% Off

TUES. - Manicures . . . \$1.50
With Shampoo and Set

WED. - \$2.00 Facial with purchase of \$10.00

THURS. - Hot Oil Treatment . . . \$3.00
With Shampoo and Set

FRI. - Men's Hair Styling . . . 20% Off

SAT. - Children's Hair Cuts . . . 20% Off
(10 and under)

Senior Citizens honored always
With 20% Off ANY Service

Call or Stop By Today for Appointment
475-1671

Lisa, Kim, Carol, Janice, Jane

County Women's Resource Directory Being Compiled

County women will have a new women's resource directory soon. The two-part directory will list agencies, organizations, and clubs which offer programs of special interest to women and will list women in private practice in the helping professions such as law, psychology, medicine, and social work.

The Washtenaw County Advisory Committee on the Status of Women is compiling the directory. "We hope to bring it out early next year," said Marilyn Kolton, PhD, Advisory Committee chairwoman. Letters and questionnaires to collect directory information went out last month.

"But we may have missed someone," Dr. Kolton said. "We urge county professional women and groups who haven't heard from us and who think they may qualify for inclusion in the directory to call 789-0335 no later than Sept. 13." "We're compiling this directory to help make women aware of the resources that are available, particularly resources that relate to the needs of women," Dr. Kolton said.

"Our goal is to advance the status of women: to support, to assist, to encourage women."

Prospective Brides Please Note

Reports of area weddings are always welcomed but must adhere to certain time limitations.

Preference will always be given to those reports submitted for the first edition following the wedding, preferably with a photograph.

Photos of good quality can be used if supplied so they may be used not later than the second week following the ceremony.

Our office has information forms to help the bride supply all pertinent details. Stop in before the wedding, secure an information form and let us help you plan your wedding story.

The Editor.

LOSE UGLY FAT

Start losing weight today or money back. MONADEX is a new tablet and easy to take. MONADEX will help curb your desire for excess food. Eat less - weigh less. Contains no dangerous drugs and will not make you nervous. No strenuous exercise. Change your life... start today. MONADEX cost \$3.25 for a 20 day supply. Large economy size is \$5.00. Also try AQUATABS - they work gently to help you lose water-bloat. AQUATABS - a "water pill" that works - \$3.00. Both guaranteed and a low price. CHELSEA DRUG STORE 101 N. Main St. - Mail Orders Filled.

After She Says "YES"...

Shower Her With
Solitaire Splendor

Bell & Crest
by Wedding Bells



Available with larger diamonds from \$100 to \$10,000.

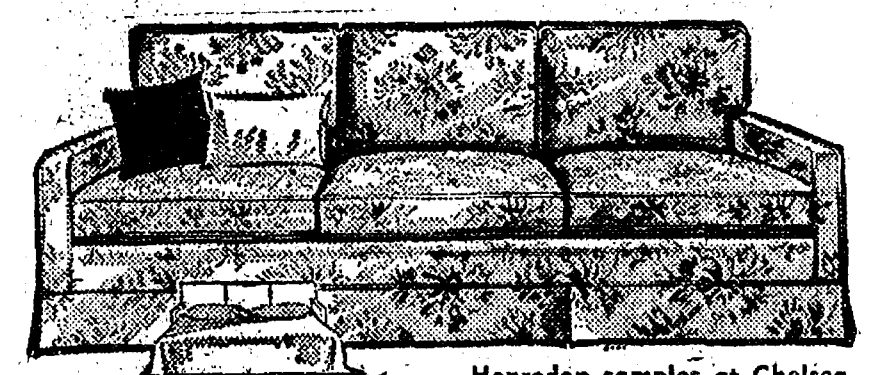
An engagement ring. Your first important purchase together. And you want to choose wisely. Bell-Crest by Wedding Bells has been pleasing brides-to-be for decades. With a vast selection of beautiful styles, fine diamonds and expert craftsmanship. Choose an engagement ring from Bell-Crest by Wedding Bells. It's a lasting gift of love.

WINANS JEWELRY

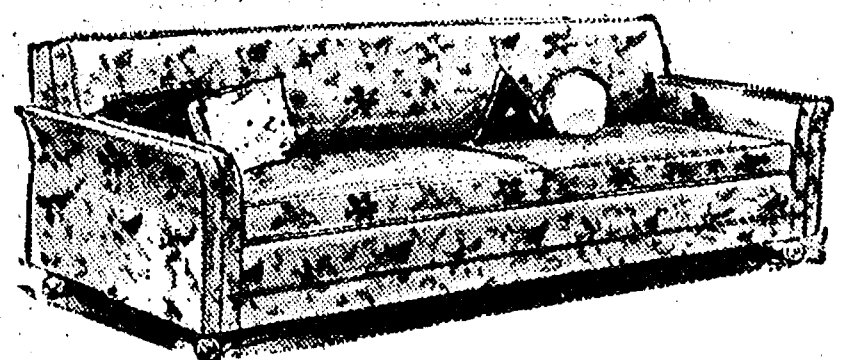
Rings and Diamonds enlarged to show detail.

20% Off...

Special order sale! Famous hand-crafted Henredon in a magnificent array of fabrics. Franklin sofas, chairs, sleepers in modern, colonial, traditional. Conover... America's colonial favorite. Three famous upholstery lines at savings for a limited time!



Henredon samples at Chelsea

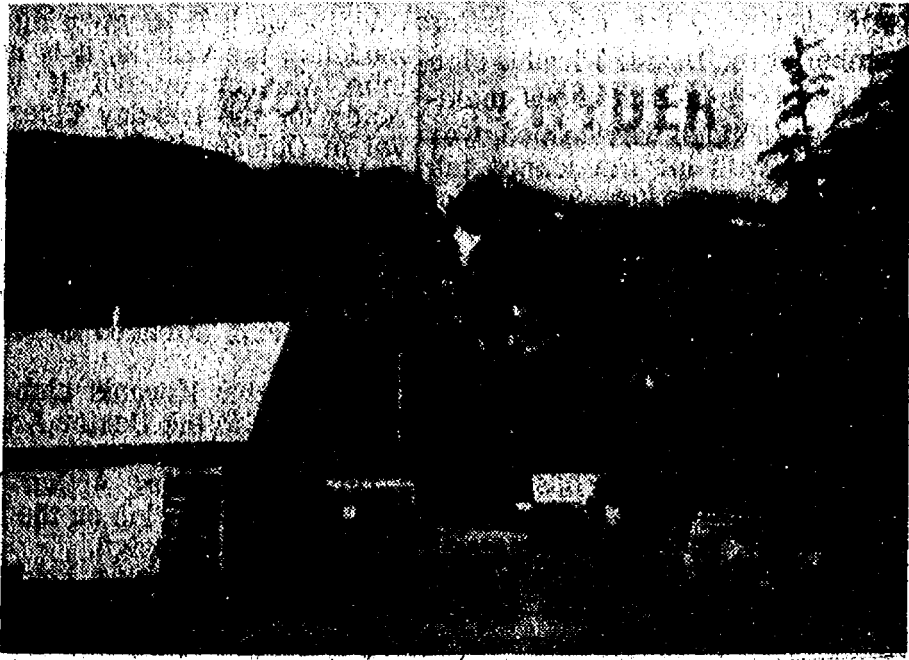


Conover: all frames selected covers.

Merkel
HOME FURNISHINGS

Chelsea: (Main Street) Open Monday, Friday evenings until 9:00. Phone 475-8621
Tucumseh: (Chicago Blvd.) Open Friday evenings until 9:00. Phone (517) 423-2205
Professional design consulting

Cheer Up, Don Turner Reports Paying \$1.20 for Gas in Alaska



THIS PANORAMIC VIEW of the ghost town of Hyder, Alaska, greets visitors approaching from the Canadian side of the International Boundary Line.



GHOST TOWN: The above photo depicts some of the ruins which may be found in Hyder, Alaska. Specifically, these remains are of the water-front buildings which were built on wood pilings. The structures either burned down, were torn down or blew down in high winds.



THIS STONE AND CEMENT STRUCTURE is one of four such structures built in 1896 by Captain D. D. Gaillard of the U. S. Army Corps of Engineers while making a preliminary survey of the area surrounding Hyder, Alaska, and Stewart, British Columbia. Two of the four block-houses are on Canadian soil as the U. S.-Canadian boundary line was not permanently established until 1903. The photographed structure above stands directly on the border line between Hyder and Stewart, and contains sleeping quarters and a supply room which serviced the men checking the border. Captain Gaillard went on to fame working on the Panama Canal. The Gaillard Cut in one of the canal's passages was named in his honor by a former U. S. president.



LOOKING TOWARD STEWART, British Columbia upon leaving Hyder, Alaska, travelers experience this vignette backdrop of mountains, some of which rise more than 6,000 feet above the water line of the Portland Canal. The Portland Canal forms the international boundary between Canada and Alaska. The customs house in the background has no inspector, thus allowing for unrestricted border crossings.



THESE THREE LAKE TROUT, or char as they are called locally, were hooked in two hours of fishing by Larry Embree and Don Turner. Turner, standing in the photo, displays the 13-, 14-, and 15-pounders which he claims are particularly delicious when smoked.

Francois Lake, B. C.
July 5, 1978

Dear Readers:

Since my last report from Watson Lake, Yukon in Canada, which included my mishap in the log jam on the wild Smith River in the wilderness, I am thoroughly dried out and on the move again.

I departed from Watson Lake on June 23 and headed for the Stewart-Cassiar road which runs south through northern British Columbia. Starting at mile 630 on the Alaska Highway, this road runs through some of the wildest areas of British Columbia for a distance of over 500 miles, ending up at the village of Kitwanga.

For three stretches of this road, one travels nearly 150 miles between gas stations, so one must remember to fill up at every station. Gasoline is \$1.20 per gallon, though of course, that is per imperial gallon. More than 100 miles of this route is over private logging roads. They are so soft and pitted, one can't drive faster than 20 miles per hour and feel safe.

Yes, this road is truly one of adventure, and one is in the midst of some of the most beautiful scenery I have ever seen on this continent. Snow capped mountains hover in the background, and snow banks line the sides of the road in the higher elevations. A late spring in this area has raised the river levels to flood stage, and the fishing was poor most of the way.

About 60 miles down the road, a nine-mile side road brings one to Cassiar, a town built by the Cassiar Asbestos Mine. The mining is quite a spectacle when the mine is in operation, but the miners were on strike, so I didn't get a tour of their enterprise. However, the scenery was worth the side trip.

One hundred fifty miles further along the road brings one to Dease Lake, a large lake which has quite a history. It played a major role in Canada's development of the interior. The road crosses the Continental Divide, where three large river systems begin. The enormous Stikine River flows to the Pacific, passing near to Wrangle, Alaska. The Dease River flows to the fiord, then on to the Arctic. A trail from Telegraph Creek on the Stikine River, leads to the Yukon River system and on to the Bering Sea. Fur traders originally used this route, followed by gold stamperers on their way to the Klondike Gold fields. The entire region is as wild today as it was a century ago.

Traveling 150 miles from Dease Lake, brings one to the Stewart Road junction which runs 39 miles to tide water at the head of the Portland Canal, a large natural inland passage 90 miles long and about two miles wide. The center of the canal is the boundary line between Canada and Alaska. Stewart is quite a prosperous town. Just across the international boundary line is the ghost town of Hyder, Alaska. Both are mining towns that flourished 50 years ago.

The 39 miles from the junction has some of the most

spectacular scenery found anywhere on this continent. All the scenery of the area is really something to see. The snow capped, glacier laden mountains stand 8,000 feet straight up above the road, and a large blue glacier flows directly to the road. I could see dozens of waterfalls from one spot. Some fell so close to the road, one could "pretty near" drink from them without leaving the driver's seat. Avalanches were still rolling down the mountains and large chunks of blue ice lay in the road after having just landed. (See picture of glacier near road).

I talked with some of the old-timers of the area, gathered some local historical data, and heard what I'm sure, were fairly "tall tales."

The people of both towns were most friendly. I was on a small boat dock one day when a fisherman came in with a nice catch of spring, or king salmon. He handed me one and invited me to go out with him the next day for a few hours of salmon fishing.

The fisherman, Jerry Mason, and his friend, Carlo Millene, of Stewart, British Columbia, (see picture), are real salmon fishermen who love the sport. They go out nearly every day after a shift at the mine. This was a real nice afternoon, and the three of us caught nine fish in about three hours. The last two were really large ones.

A masonry structure on the boundary line between Stewart, B.C., and Hyder, Alaska has quite a history (see picture). I recommend this area to anyone who likes adventure and history. This spot, Hyder, is the only contact I will have with Alaska on this particular trip, as I will be heading south and east from here.

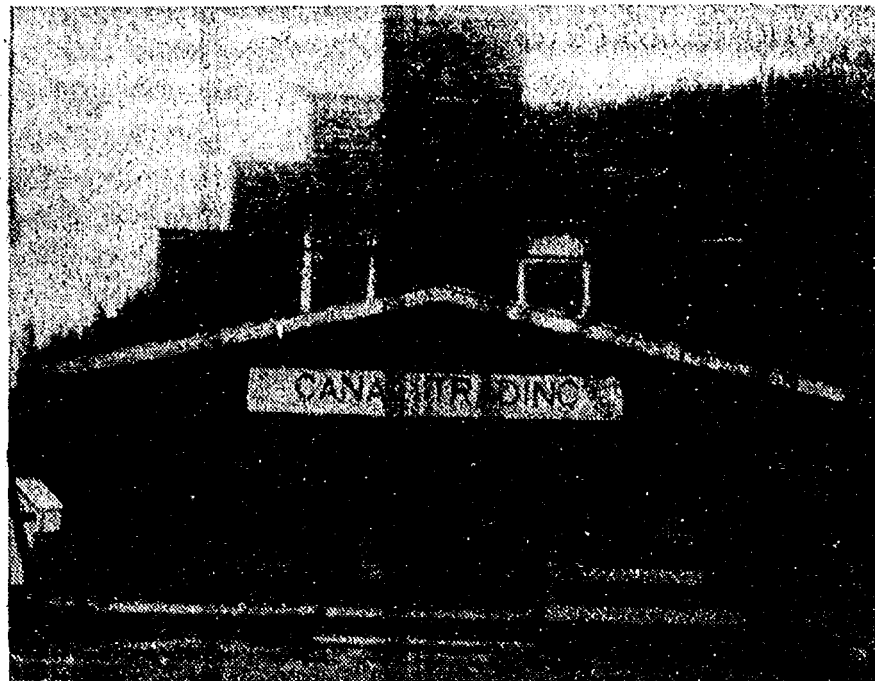
Farther down the road, a sign read "127 miles to Hazelton, B.C." One hundred miles of the road was again private logging. It was so rough, I could hardly stay in the seat of my vehicle. On every turn, I met a logging truck taking his half of the road out of the middle. It took me nearly all day to drive 160 miles. In spots, the road was washing out due to melting snow, and the streams changed course.

In one place, the water was nearly to the floor of my vehicle, but I paddled through and went on to Kitwanga. There, I crossed the Skeena River to the paved, Number 16 highway, and continued on to Smithers, B.C. The next day, in Smithers, I heard the Stewart highway was closed due to wash-outs. Thus I was lucky to have crossed when I did, as there is no telling when the road would re-open.

On July 1, I drove to the home of my good friends Larry and Ethyl Embree on Francois Lake, one of the most beautiful and quiet spots on the entire 87-mile lake. Francois Lake is full of beautiful, red-fleshed rainbow trout, kokanee salmon, and large char, or lake trout. (See picture of a two-hour catch, 13-, 14- and 15-pounders, taken by my good friend Larry Embree and me.)

I decided to get running along, as I wanted to spend sometime at the Calgary Stampede which opens July 9, and lasts until July 18. I will include the results of that event in my next article.

Your wandering reporter:
Don Turner.



THIS HISTORIC BUILDING was one of the original dwellings built in Hyder, Alaska in the early 1900's, when Hyder was a booming mining town.

AMERICAN LEGION POST 557, DEXTER

Still Has

BICENTENNIAL FLAGS

Bicentennial Flag, 3x5 . . . \$10.00

Bicentennial Flag, 2x4 . . . \$ 7.00

Betsy Ross Flag, 3x5 . . . \$10.00

Bennington Flag, 3x5 . . . \$10.00

Call Jim Schilz - 426-8354



INTERNATIONAL DAY GOODIES: Chelsea Bicentennial International Day visitors lift the lid on a bowl of rice as they prepare to sample some of Jo Balogh's Chinese cooking. The aroma of food from several nations mixed in the air at the fairgrounds on the Thursday, Aug. 19 day of celebration. The day was a tribute to America's "melting pot" image.



HUSBAND CALLING: Marie Smith displays the style which won her first place in Chelsea's Bicentennial husband calling contest.



PANCAKE TOSSERS Bev Ives, Nadine Koch, and Jennie Hafner (left to right) flip their flapjacks high into the air as they compete for the pancake toss title during the bicentennial contest. An unidentified woman reaches down to recover a pancake which never quite made it back to her spatula.



TOBACCO SPITTING: Margot Koenn, co-chairman of Chelsea's Agricultural Day, observes the tobacco marks of tobacco spitting contestants, from left, Don Laier, Archie Bradbury, and Bob Heller. Laier captured second place in the competition, Thursday, Aug. 19.

Century self-contained water softener

compact
convenience
gets rid of
washday blues

Gone are dull, drabby colors . . . stiff, starchy laundry . . . gray shirts that should be white. With a Century water softener, wash days become brighter. And this beautiful compact unit frees-up floor space, makes your laundry area larger. Phone for details.



Master Charge and BankAmericard Welcome

CRYSTAL CLEAR CO.

4757 Dexter-Pinckney Rd.
Dexter, Mich. - 426-4220

STORE HOURS: Mon.-Fri. 9-5:30
Sat. 9-4. Closed Sundays



HOG CALLING: Bob Heller uses a microphone to improve the volume of his hog call in Chelsea's bicentennial hog calling contest Thursday, Aug. 19. Sizing up the competition in the background are a few of the other hog calling contestants. Left to right, they are Archie Bradbury, Don Laier, winner LeRoy Heller, Bob Heller, and hog calling master of ceremonies Earl Heller.

Huron Valley Girl Scout Council Charter Renewed

The Huron Valley Girl Scout Council has received word that its charter, authorizing the conduct of Girl Scouting in this area, has been renewed according to Council president Mrs. Frances Bauer of Plymouth.

The triennial charter review is conducted regularly by Girl Scouts of U.S.A. Mrs. Kris Howard, National Board of Directors member, and a Girl Scouting professional Ms. Nan Romine of the National Staff, conducted extensive interviews of staff, volunteer and Girl Scouts in June. The purpose of the review is to maintain high quality program for girls, Mrs. Bauer explained.

Commenting on the local operation which provides Girl Scouting in Washtenaw, Livingston, western Wayne and northern Monroe counties, the report described the Huron Valley Council as "a strong organization with a fine core of volunteers, much good program for girls, stable membership, effective community and public relations and sound management both financially and in terms of community support."

Suggestions made for improving local program included the need to build stronger parent support and involvement, by-laws revision (currently under way) and a program for strengthening troop committees.

Since the Council's last review in 1973, enrollment has grown more than six percent, to a current level of 17,800 girls annually served. Other achievements during the

three-year period cited were the development and implementation of an affirmative action program for employed staff and board membership, a record of growing participation in the annual Girl Scout Cook Sale, and a sustained program of construction and improvement of Council camps.

The Council operates three Girl Scout camps. The three-year Camp development has included the construction of two buildings at Camp Linden in Livingston county, refurbishing of the troop house, Camp Hilltop in Ann Arbor and improvements in the fencing shelters and other facilities at Camp Crawford in eastern Washtenaw county.

Council growth has been part due to an annual recruitment drive currently under way in this area which this year seeks to entice troop leaders, assistant troop leaders and troop services directors.

The noted American educator and lecturer, William Holmes McGuffey, was born Sept. 23, 1800 in Claysville, Pa. Although accomplished in many fields, McGuffey is best remembered for his Eclectic Readers, a series of textbooks the first six grades of elementary schools. These books, used by a like Henry Ford and the Wright Brothers, did much to influence moral and cultural development of American school children in the 19th century. The primitive cabin in which McGuffey was born now stands in Greenfield Village.

Here's the Way
TO SAVE

DRIVEWAY COATING SALE



BLACK SHIELD

EXCELLENT QUALITY

GILSONITE-BASE SEALER

Dries Gloss Black

5 GAL. . . . \$5.87 REG. \$7.50



BLACK TOP

EMULSION TYPE SEALER

RESISTS GAS & OIL DAMAGE

Dries Slate Gray

5 GAL. . . . \$6.27 REG. \$7.95

Both Cover 100 Sq. Ft. Per Gal.

PRICES IN EFFECT THRU SAT., SEPT. 25

CHELSEA LUMBER

+ Services in Our Churches +

CONGREGATIONAL CHURCH
(United Church of Christ)
The Rev. Carl Schwarm, Pastor
Sunday, Sept. 12—
10:30 a.m.—Worship and Sunday school.

OUR SAVIOR LUTHERAN CHURCH
1815 S. Main, Chelsea
The Rev. William H. Keller, Pastor
Thursday, Sept. 9—
8:00 p.m.—Evangelism Committee meeting.
Sunday, Sept. 12—
9:00 a.m.—Sunday school and Bible classes.
10:30 a.m.—Worship service.
12:00 noon—Congregational Picnic.

Monday, Sept. 13—
7:30 p.m.—Elders' meeting.
Newsletter article deadline.
Tuesday, Sept. 14—
9:30 a.m.—Bible Study.
1:00 p.m.—Pastors' Conference begins.
6:30 p.m.—Guild Salad Smorgasbord.
Wednesday, Sept. 15—
4:00 p.m. to 6:00 p.m.—Confirmation.

ZION LUTHERAN CHURCH
Corner of Fletcher, Waters Rds.
The Rev. John R. Morris, Pastor
Friday, Sept. 10—
Pastor attends two-day District Executive and District Council at St. Basil Lutheran church in Pontiac.
Saturday, Sept. 11—
1:00 p.m.—TTTC, Senior Citizens.
Sunday, Sept. 12—
Rally Sunday.
9:00 a.m.—Sunday school, all ages, new classes.
10:15 a.m.—Worship.
Monday, Sept. 13—
7:00 p.m.—Senior Choir begins fall practice.
Tuesday, Sept. 14—
7:30 p.m.—Shalom Circle for post-high school and young adult women.

NORTH LAKE UNITED METHODIST CHURCH
The Rev. David Stiles, Pastor
Every Sunday—
8:30 and 10:00 a.m.—Worship service.

ST. JOHN'S UNITED CHURCH OF CHRIST
Rogers Corners
Every Sunday—
10:30 a.m.—Worship service.

ST. JOHN'S EVANGELICAL AND REFORMED CHURCH
(United Church of Christ)
Francisco
The Rev. Virgil King, Pastor
Every Sunday—
10:30 a.m.—Church services.

CHURCH OF CHRIST
13861 Old US-12, East
Evangelist John M. Hamilton
Every Sunday—
10:00 a.m.—Church school.
11:00 a.m.—Worship service.
Nursery will be available.
6:00 p.m.—Worship service.
Every Wednesday—
7:30 p.m.—Bible study.

METHODIST HOME CHAPEL
Chaplain Ira Wood, Pastor
Every Sunday—
8:45 a.m.—Worship service.

FIRST UNITED PRESBYTERIAN CHURCH
Unadilla
The Rev. T. H. Liang, Pastor
Every Sunday—
9:45 a.m.—Sunday school.
11:00 a.m.—Worship service.

WATERLOO VILLAGE UNITED METHODIST CHURCH
8118 Washington St.
The Rev. Glenn Kjellberg, Pastor
Every Sunday—
10:00 a.m.—Sunday school.
11:15 a.m.—Worship service.

FIRST UNITED METHODIST CHURCH
(The Rev. Marvin H. McCallum, Pastor)
Thursday, Sept. 9—
9:00 a.m.—United Methodist Women Executive Board meeting in the Litteral Room. Babysitting provided.
7:00 p.m.—Elementary church school teachers meeting in the educational unit.
Friday, Sept. 10—
12 noon—Church Yard Sale begins.
Saturday, Sept. 11—
9:00 a.m.—Church Yard Sale.
Sunday, Sept. 12—
10:00 a.m.—Worship service (nursery provided).
10:20 a.m.—Church school, 4-year-olds through 6th graders.
11:00 a.m.—Coffee and punch hour.
Monday, Sept. 13—
7:00 p.m.—Task Force on Evangelism meeting in the Educational Unit.
8:00 p.m.—Council on Ministries meeting in the Educational Unit.
Tuesday, Sept. 14—
9:30 a.m.—Charismatic Bible Sharing Group meeting.
Wednesday, Sept. 15—
9:00 a.m.—Sarah Circle meeting in the home of Mrs. Donna Palmer.
1:00 p.m.—Ruth Circle meeting in the Crippen Building.
Thursday, Sept. 16—
9:00 a.m.—Elizabeth Circle meeting in the home of Mrs. Sharon Eisenbeiser.
1:00 p.m.—Church Women United Executive Committee meeting in the Litteral Room.
7:00 p.m.—Work Area in Education meeting in the Educational Unit.

ST. JACOB EVANGELICAL LUTHERAN CHURCH
12501 Rietmiller Rd., Grass Lake
The Rev. Andrew Bloom, Pastor
Every Sunday—
9:00 a.m.—Worship service.
10:15 a.m.—Divine services.

SALEM GROVE UNITED METHODIST CHURCH
3320 Nottel Rd.
The Rev. Gerald R. Parker, Pastor
Every Sunday—
9:30 a.m.—Sunday school.
10:30 a.m.—Worship service.

NORTH SHARON BIBLE CHURCH
Sylvan and Washburne Rds.
The Rev. William Enslen, Pastor
Every Sunday—
11:00 a.m.—Worship service.
10:00 a.m.—Sunday school.
(Nursery will be available.) Junior church classes.
8:00 p.m.—Senior High Youth meeting. Youth Choir.
7:00 p.m.—Evening worship services. (Nursery available.)
All services interpreted for the deaf.
Every Wednesday—
7:00 p.m.—Bible study and prayer meeting. (Nursery available.)
Bus transportation available: 428-7222.

FIRST ASSEMBLY OF GOD
The Rev. Richard Coury, Pastor
Every Sunday—
9:45 a.m.—Sunday school.
11:00 a.m.—Worship service.
6:00 p.m.—Evening worship.
Every Wednesday—
7:00 p.m.—Christ's Ambassadors. Missionettes. Bible meditation and prayer.

FIRST CHURCH OF CHRIST, SCIENTIST
1887 Washenaw Ave., Ann Arbor
Every Sunday—
10:30 a.m.—Sunday school, morning service.

BAHA'I FIRESIDE
Every Thursday—
8:00 p.m.—At the home of Tob Peterson, 705 G. Main St. Anyone wishing to learn about the Baha'i faith is welcome.

ST. PAUL UNITED CHURCH OF CHRIST
The Rev. R. J. Ratzlaff, Pastor
Sunday, Sept. 12—
9:00 a.m.—Church school.
10:30 a.m.—Church school.
10:30 a.m.—Worship service.
7:00 p.m.—Senior Youth.
Tuesday, Sept. 14—
3:45 p.m.—Joyful Noise, grades 1 to 3.
Wednesday, Sept. 15—
1:00 p.m.—World Wide meeting.
3:45 p.m.—Junior Choir.
4:45 p.m.—Staff meeting.
8:00 p.m.—Chancel Choir.
Thursday, Sept. 16—
7:30 p.m.—Church and Community Committee meeting.

ST. THOMAS EVANGELICAL LUTHERAN
Ellsworth and Haab Rds.
The Rev. Jerome Dykstra, Pastor
Thursday, Sept. 9—
7:30 p.m.—Adult Information Class.

Saturday, Sept. 11—
9:00 a.m.—Pre-Communion Class.
Sunday, Sept. 12—
9:30 a.m.—Sunday school and Bible class.
10:45 a.m.—Worship service.
Monday, Sept. 13—
8:00 p.m.—Church Council.

ST. BARNABAS EPISCOPAL CHURCH
20550 Old US-12
The Rev. Fr. Jerrold F. Beaumont, B.S.P.

Every Sunday—
10:00 a.m.—Holy Communion first, third and fifth Sundays, and 9 p.m. every Wednesday.
10:00 a.m.—Morning prayer. Second and fourth Sundays. Church school and nursery every Sunday.
Every Wednesday—
9:00 p.m.—Study and discussion groups.
First Wednesday of every month Bishop's Committee.
Third Thursday of every month—Episcopal church women.

ST. MARY CATHOLIC CHURCH
The Rev. Fr. David Philip Dupuis, Pastor

Mass Schedule:
Every Saturday—
4:00-5:00 p.m.—Confessions.
7:00 p.m.—Mass.
Immediately after 7 p.m. Mass—Confession.
Sunday, Sept. 5—
7:00 a.m.—Altar Society Communion.
Every Sunday (summer schedule)—
7:00, 9:00, 11:00 a.m.—Mass.

BETHEL EVANGELICAL AND REFORMED CHURCH
(United Church of Christ)
Freedom Township
The Rev. Roman A. Reineck, Pastor
Every Sunday—
10:00 a.m.—Worship service.

CHELSEA BAPTIST CHURCH
377 Wilkinson St.
The Rev. James Stacey, Pastor
Every Sunday—
9:45 a.m.—Sunday school for the whole family.
11:00 a.m.—Morning worship service and children's church.
7:00 p.m.—Evening service, informal singing, sharing, study and discussion. (Nursery care provided for all services.)
Home Bible Studies each week in the homes of the leaders.
Teen Ministry, Sunday at 6 p.m. and study groups during the week.

GREGORY BAPTIST CHURCH
The Rev. Paul White, Pastor
Every Sunday—
9:45 a.m.—Sunday school.
11:00 a.m.—Morning worship.
6:00 p.m.—Young people.
7:00 p.m.—Evening worship.
7:30 p.m.—Thursday mid-week worship service.

Free Pamphlet Lists Dangers in Mixing Medicines

Some things in combination are kinda nice — cheese and crackers for instance. But, some items don't make a good duet at all. Like medicines. No matter what medicines you take, even if it is aspirin, the minute you take more than one medication, you could be in trouble. Mixing medicines can make you very sick.

In a new reprint, the Food and Drug Administration (FDA) gives advice to help you protect yourself from this hazard. For a single free copy of Mixing Medicines, write to the Consumer Information Center, Dept. 60, Pueblo, Colo. 81009.

When your physician gives you a prescription, be very sure he or she knows what other drugs you are taking, including headache remedies, cold medicines, laxatives, and other non-prescription medicines. And, remember alcohol is a drug too. Ask whether drinking alcohol will have an adverse effect when you're taking your prescription.

Don't take medicine that's been prescribed for somebody else. The drug in that prescription could interact with something else that you're taking. Or, it may just be totally wrong for you or your ailment.

Over-the-counter medicines are required by FDA to contain information about drug interactions. But, these warnings don't call the drugs by their brand names. Instead, the labels give the official established or generic name of the drug. So, if you are taking a medicine prescribed by its brand name, be sure to find out what the generic name is. (Be sure you find this out not only for new prescriptions, but for any you might already be taking.)

Mixing Medicines (free) is one of over 250 selected Federal Consumer publications listed in the catalog, Consumer Information. Published quarterly by the Consumer Information Center, of the General Services Administration, the free catalog is available from the Consumer Information Center, Pueblo, Colo. 81009.

CHURCH OF JESUS CHRIST OF LATTER-DAY SAINTS
Meetings at
St. Barnabas Episcopal Church
20550 Old US-12
Every Sunday—
11:00 a.m.—Priesthood meeting.
12:30 p.m.—Sunday school.

IMMANUEL BIBLE CHURCH
145 E. Summit St.
The Rev. LeRoy Johnson, Pastor
Every Sunday—
9:45 a.m.—Sunday school, nursery provided.
11:00 a.m.—Morning worship, nursery provided.
6:00 p.m.—Evening worship.
Every Wednesday—
7:00 p.m.—Family hour, prayer meeting, and Bible study.

FIRST UNITED METHODIST
Parks and Territorial Rds.
The Rev. Glenn Kjellberg, Pastor
Every Sunday—
9:15 a.m.—Morning worship.
10:00 a.m.—Sunday school.



HEIFERS REPLY HANDSOMELY—Grow 'Em Right!

At Wayne Research Farm twin 3-day-old heifers went on test.

One was fed Wayne Calnip medicated non-cereal milk replacer followed by Wayne Calf Krunch. The other: whole milk, hay, grain, soybean meal.

Wayne-fed heifer was ready for breeding earlier, calved earlier, produced milk 3 months earlier. And 2½ years later, showed a profit difference over twin sister of \$164.26!

Better stop in.

McCALLA FEED SERVICE
Phone 475-8153
12875 Old US-12, Chelsea
WAYNE CALNIP & CALF KRUNCH



Jiffy market

Big Enough To

Serve You . . . Small Enough To Know You!

Full Line Supermarket
BEER - WINE - LIQUOR
AUTHORIZED FOOD STAMP STORE
LOTTERY TICKETS
MARATHON GAS PUMPS
2-CYCO GAS PUMPS

Corner Sibley and Workner Rds.
PHONE 475-1701

OPEN

7 DAYS A WEEK

7 a.m. - 10 p.m.

Sale Prices Effective
Thurs., Sept. 9 thru Sun., Sept. 12

JIFFY MARKET'S FRESH MEATS FEATURING USDA CHOICE BEEF

U.S.D.A. CHOICE

RIB STEAKS

\$1.49 lb.

Ideal for cook-outs!



U. S. D. A. CHOICE BEEF CHUCK ROAST

BLADE CUT lb. **69¢**

CENTER CUT lb. **79¢**

ARM CUT lb. **\$1.09**

ENGLISH CUT lb. **\$1.09**

ROUND STEAK lb. **\$1.39**

SLICED BACON lb. **\$1.39**

GROUND CHUCK lb. **\$1.19**

GROUND ROUND lb. **\$1.29**

U.S.D.A. Choice Freezer Beef

SIDES - FRONTS - HINDS - LOINS - FULL RIB
Cut, Wrapped, Frozen To Your Specifications.

Custom Cutting, Grinding, Wrapping and Freezing

YOUR BEEF

QUICK SERVICE on HAULING and SLAUGHTERING

CALL 475-1701

Local Farm Beef for Sale. Corn-Fed Beef At Its Best!

FARM MAID DAIRY - CHELSEA'S FAVORITE!!

SOUR CREAM Pt. Crtn. **49¢**

COTTAGE CHEESE 12-Oz. Crtn. **39¢**

ORANGE JUICE 1/2 gal. **59¢**

HOMOGENIZED MILK Gallon **\$1.39**

RED, WHITE & BLUE ICE CREAM 1/2 gal. **89¢**

VELVET PEANUT BUTTER 2-Lb. Jar **98¢**

POTATO CHIPS 12-Oz. Bag **79¢**

COCA-COLA 8 pac **\$1.29**

COUNTRY STYLE BREAD 1 1/4-Lb. Loaf **39¢**

POTATOES 10-Lb. Bag **69¢**

COLBY LONGHORN CHEESE, Bulk Lb. **\$1.29**

WHITE BREAD 1 1/4-Lb. Loaf **49¢**

Buy the Best!

Concerned About Energy? . . . Land Use? . . . Huron Clinton Parks?

. . . Flowing Water? . . . Air Pollution?

Get all the Details at
WASHTENAW COMMUNITY COLLEGE
CHELSEA EXTENSION
This Fall . . .

Enroll NOW in 142 ENVIRONMENTAL SCIENCE

INSTRUCTOR: ALICE STEINBACH

Class meets Tuesday and Thursday evenings
starting the week of September 13.

You may also register the first night of class.

For further information, call 971-6300, Ext. 548



Community Calendar

Woman's Club of Chelsea "welcome back" punch hour 6:30 p.m., Sept. 14 at the home of Mrs. Robert German.

Chelsea Rebekah Lodge No. 130 will resume regular meetings beginning 7:30 p.m. Sept. 21 at the Temple Building.

Chelsea Child Study Club fall picnic 6:30 p.m. Tuesday, Sept. 14, at the home of Betty Cox, 27 Sycamore Dr.

Chelsea Area Historical Society September meeting has been cancelled. First fall meeting will be 8 p.m. Monday, Oct. 11, in First Congregational church.

Past Mothers Club of Olive Chapter, OES, pot-luck and meeting, 12:30 p.m. Thursday, Sept. 16 at the home of Thelma Pendley.

Waterloo Village Ladies Aid rummage sale at Waterloo Town Hall Sept. 17, 10 to 3, and Sept. 18, 10 to 4.

Busy Two 'n' One 4-H Club regular monthly meeting 7:30 p.m., Sept. 14 at the home of Diane Ottomani.

Chelsea Community Fair pot-luck 7:30 p.m. Saturday, Sept. 18, at the Fair Service Center. Bring own table service and dish to pass. Meat furnished. Anyone who helped at the Fair is welcome.

Embroiders Guild of America, Ann Arbor chapter, meets at 1 p.m. at Earhart Clubhouse on Greenhills Dr., Sept. 13. Evening group meets at 7:30 p.m. Sept. 14 at Ann Arbor Public Library meeting room, 343 S. 6th. All are welcome. For more information call 761-9115 or 688-6192.

Kinder Klub 7:30 p.m., Sept. 14, at the home of Jean Hafner. Salad supper, guests welcome.

Ann Arbor Area Ostomy Association meeting Thursday, Sept. 16, at the Senior Citizens Guild, 502 W. Huron, Ann Arbor, at 7:30 p.m. Guest speaker will be Marshall Bruce of UOA. Everyone welcome.

Altar Society meeting Sept. 13, 7:30 p.m. in St. Mary School Gymnasium. Program: Movie, "Visit to Fatima."

Sharon Township Planning Commission regular meeting third Wednesday of each month.

Chelsea Senior Citizens every Friday at St. Mary school hall on Congdon St. First Friday of the month, cards, 7:30 p.m.; second Friday of the month, cards, 7:30 p.m.; third Friday of the month, pot-luck and cards, 6:30 p.m.; fourth Friday of the month, business meeting and cards, 7:30 p.m.; if there is a fifth Friday of the month, cards, 7:30 p.m.

Flea Market, North Lake United Methodist church, beginning May 8 and every Saturday thereafter, 10 a.m. to 4 p.m. Lunch counter. Dealers wanted.

Chelsea Co-op Nursery applications for 1976-77 classes are now being taken. For information, call Leslie Bowers, 475-1401, xad121.

Lyndon Township Planning Commission meets the second Thursday of the month at the Township Hall at 8 p.m.

Sylvan Township Board meeting the first Tuesday of the month, at 7 p.m., at Sylvan Township Hall.

Modern Mothers first meeting 6:30 p.m. Tuesday, Sept. 14, at the home of Pat Whitesall. Pot-luck, bring own table service, dish to pass with recipe, and wrapped "white elephant."

Rogers Corners Farm Bureau group meeting 8:30 p.m., Sept. 10, at the home of Mr. and Mrs. Neil Stierle.

Unadilla Baseline Cemetery meeting, 8 p.m., Sept. 15, at the Unadilla church.

Gigantic yard sale. Something for everyone. Sept. 10, 12-7, Sept. 11, 9-4. Chelsea Methodist church, 128 Park St.

The Lima Township Board will meet Sept. 13 instead of Sept. 6, due to Labor Day.

Lima Township Board regular meeting the first Monday of the month, 8 p.m. at Lima Township Hall.

Inquiries regarding the Chelsea blood bank may be directed to Harold Jones in the event that Mrs. Dudley Holmes is unavailable, or to Cornelia Fry, American Red Cross in Ann Arbor, 971-6300.

AA and Al-Anon meeting. Monday evenings at Chelsea Hospital, 8:30 p.m. Closed meetings.

Tours of Chelsea Community Hospital and surgical center are available for small groups. To arrange for tours, call: Neva Jordan, 428-8027, or Dorothy Miller 475-8020.

Chelsea Community Farm Bureau Thursday, Sept. 9, 8 p.m. at the home of Mr. and Mrs. Calvin Clark. Co-hosts: Mr. and Mrs. Dorr Whitaker.

Chelsea Band and Orchestra Boosters, Thursday, Sept. 9 at 8 p.m. in the High school band room.

Lima Township Planning Commission regular meeting the third Tuesday of every month, 8 p.m. at the Township Hall.

Sharon Township Board regular meeting first Thursday of each month.

Lyndon Township Board meets the third Thursday of the month at the Town Hall at 7 p.m.

Chelsea Home Meal Service delivers one hot meal a day to elderly and disabled living in the Chelsea area. For information call 475-8014 or 475-2823.

American Legion Hospital equipment is available by contacting Guy Freysinger at 475-1961.

Humane Society of Huron Valley has dogs and cats for adoption. Owners may reclaim their lost pets. Phone 682-5885. Open from 9 a.m. to 5 p.m. daily. Sunday, 1 p.m. to 5 p.m. 100 Cherry Hill Rd., quarter-mile south of Plymouth Rd. at Dixboro.

Every Thursday, 7:30 p.m. Lecture-Discussion on Alcoholism at the Chelsea Community Hospital. Lectures are co-sponsored by the hospital's Alcoholism Therapy Program and the Washtenaw Council on Alcoholism. For further information, call Carl Asher, 475-1311 or Donna Caswell, 971-7930. Everyone welcome.

Pap tests are free for all area women, Tuesday mornings, at St.

Hafner Sisters Join in Labor Day Walk

Two Chelsea youngsters, Marilyn and Michelle Hafner, both 14 and the daughters of Mr. and Mrs. Vincent Hafner of 49300 Cavanaugh Lake Rd., joined more than 20,000 enthusiasts, led by Michigan Governor Milliken, in the 1976 annual Labor Day Walk across MacKinnac Bridge Monday, Sept. 6.

The two sisters finished the five-mile trek in 1 hour, 18 minutes, slightly behind Milliken's time of 1 hour, 5 minutes. Both were among the first 200 to 300 walkers to cross the bridge.

Setting the pace in this year's traditional event was a group of race-walkers from the National Walkers Association. The public then followed in heats of hundreds.

The Labor Day Walk originated in 1958, the year the MacKinnac Bridge was finally completed. Beginning with the bridge crossing, the entire day is spent in ceremonial tribute to the man-made link between Michigan's upper and lower peninsulas. For the safety of the thousands of crossing pedestrians, one-half of the bridge is shut off to traffic for the day-long event.

Marilyn and Michelle traveled to the MacKinnac Bridge just to participate in the walk.

BIRTHS

A son, Jason Alan, to Mr. and Mrs. Rick McLean of Milan in St. Joseph Mercy Hospital Sept. 6.

Maternal grandparents are Mr. and Mrs. Robert Smith of Riker Rd., Chelsea, and paternal grandparents are Mr. and Mrs. Daniel McLean of Saline. The newborn's mother is the former Julie Smith of Chelsea.

A daughter, Tina Marie, to Mr. and Mrs. Frank Hutchinson of Stockbridge, Aug. 31, in St. Joseph Mercy Hospital, Ann Arbor. Maternal grandparents are Mr. and Mrs. Andrew Tykoski of Dexter, and paternal grandparents are Mr. and Mrs. Robert Hutchinson of Dexter.

A son, David Daniel, to Mr. and Mrs. Orson Beeman, Jr., 9043 Beeman Rd., Aug. 26 in St. Joseph Mercy Hospital, Ann Arbor. Paternal grandparents are Mr. and Mrs. Orson Beeman, Sr., 9015 Beeman Rd. Maternal grandparents are deceased.

Relocation back to Ypsilanti township was justified on that basis said Balmer, who pointed out that acceptance by the community is essential to a resident's progress.

Dawn Farms will thus vacate their Sylvan township facility in favor of Ypsilanti township on Sept. 15.

Free copies of the 1976-77 Guide to Recreational Vehicle Dealers in Michigan, published by the Michigan Association of Recreational Vehicle and Campgrounds (MARVAC), are now available.

Ed Klim, director of the MMIR-VI Recreational Vehicle division, said that free copies of the directory may be obtained by sending a self-addressed stamped business-size envelope to RV Dealers Guide, MARVAC, 19045 Farmington Rd., Livonia 48152.

Joseph Mercy Hospital, Ann Arbor. Call American Cancer Society office, 668-8857 for appointment.

The Bookmobile from the Washtenaw County Library will stop weekly on Wednesdays from 4:15 to 4:45 p.m. at the North Lake Methodist church. From 5 p.m. to 5:30 p.m. Wednesdays, the bookmobile will be at the Cavanaugh Lake Store.

TOPS (Take Off Pounds Sensibly) is back in Chelsea. Come join us. What can you lose, but unwanted pounds. For information call 475-8139 or 475-8905.

Free RV Dealer Directory Offered

Free copies of the 1976-77 Guide to Recreational Vehicle Dealers in Michigan, published by the Michigan Association of Recreational Vehicle and Campgrounds (MARVAC), are now available.

Ed Klim, director of the MMIR-VI Recreational Vehicle division, said that free copies of the directory may be obtained by sending a self-addressed stamped business-size envelope to RV Dealers Guide, MARVAC, 19045 Farmington Rd., Livonia 48152.

Joseph Mercy Hospital, Ann Arbor. Call American Cancer Society office, 668-8857 for appointment.

The Bookmobile from the Washtenaw County Library will stop weekly on Wednesdays from 4:15 to 4:45 p.m. at the North Lake Methodist church. From 5 p.m. to 5:30 p.m. Wednesdays, the bookmobile will be at the Cavanaugh Lake Store.

TOPS (Take Off Pounds Sensibly) is back in Chelsea. Come join us. What can you lose, but unwanted pounds. For information call 475-8139 or 475-8905.

Free RV Dealer Directory Offered

Free copies of the 1976-77 Guide to Recreational Vehicle Dealers in Michigan, published by the Michigan Association of Recreational Vehicle and Campgrounds (MARVAC), are now available.

Ed Klim, director of the MMIR-VI Recreational Vehicle division, said that free copies of the directory may be obtained by sending a self-addressed stamped business-size envelope to RV Dealers Guide, MARVAC, 19045 Farmington Rd., Livonia 48152.

Joseph Mercy Hospital, Ann Arbor. Call American Cancer Society office, 668-8857 for appointment.

The Bookmobile from the Washtenaw County Library will stop weekly on Wednesdays from 4:15 to 4:45 p.m. at the North Lake Methodist church. From 5 p.m. to 5:30 p.m. Wednesdays, the bookmobile will be at the Cavanaugh Lake Store.

TOPS (Take Off Pounds Sensibly) is back in Chelsea. Come join us. What can you lose, but unwanted pounds. For information call 475-8139 or 475-8905.



SCHOOL BUILDING ON SCHEDULE: Wednesday, Sept. 1, the concrete slab was poured for the North Sharon Christian School Building. The building 24'x88' is being constructed by National Homes, Inc. The structure is flexible so that additions may be made in stages as they are needed. The building and structure was to arrive Sept. 7 and be erected in one day.

Dawn Farms

(Continued from page one)

Residents at Dawn Farms were described as voluntary referrals from social agencies, out-patient clinics, and the 16th District Court. Drugs and alcohol were unconditionally prohibited from the facility at all times, and the rule strictly enforced, according to Wortley and Balmer.

Residents were required to complete a nine-month program of treatment, the goal of which was to encourage resocialization. The first 30 days were to be spent in isolation. Two consulting physicians and a psychiatrist attended to the medical needs of the rehabilitation center's residents. In an emergency situation, Balmer state, either a physician would be called out or the patient would be transported to a medical facility.

Contrary to rumor, Dawn Farms officially incorporated in May, 1973, and began operations in Ypsilanti township, where good relations with neighbors and the community had materialized. The move to Chelsea was seen as beneficial to facility residents as the atmosphere of a rural area had often been instrumental to a patient's success along the road to rehabilitation.

Relocation back to Ypsilanti township was justified on that basis said Balmer, who pointed out that acceptance by the community is essential to a resident's progress.

Dawn Farms will thus vacate their Sylvan township facility in favor of Ypsilanti township on Sept. 15.

WCC Offering Bible Course at Methodist Home

Washtenaw Community College is again offering courses at the Chelsea United Methodist Retirement Home, open to all Senior Citizens.

Friday, Sept. 10 will be the first meeting of a 14-week course in Bible Literature, ending Dec. 1. This course will be taught by the popular instructor of last year's Bible classes, Clayton Libolt. The course will concentrate on the historical and interpretive questions of the literature of the prophets. It will include the newest material from the archeology of the ancient Near East, the spectacular literary remains of ancient Babylonia, present day Tell Markir. The primary source material, however, will be from the Bible itself.

Classes will meet every Friday morning at 9:30 in the Chapel, and are free to anyone over 60. Community residents interested in a fresh and exciting approach to the Bible are urged to join the class.

Groundbreaking Set For Lutheran School

After three years of holding classes in the fellowship area of the church building, Faith Lutheran school will break ground Sunday, Sept. 12, for a new classroom building. The brief service will immediately follow the regular 10 a.m. worship service. Light refreshments will be served.

The new building will be built adjacent to the four-year-old church building at 9575 North Territorial Rd. It will contain approximately 2,800 square feet, with two large classrooms, bathrooms, and a mechanical room.

The classrooms are large, about 25 feet by 38 feet. Each room will be self-contained, with learning centers, listening centers, and storage areas.

The congregation has been organized into work divisions and will do much of the labor themselves. A fund-raising campaign has nearly been completed and the building should be paid for within three years from date of completion.

Architect for the project is Henry Kowaleski, a staff member of the University of Michigan school of architecture.

The school is a christian day school, operated by the congregation. At present, grades kindergarten through 7th grade are being taught.

SCHOOL LUNCH MENU

Week of Sept. 13-17

Monday — Hamburgers, buns, trimmings, tater tots, fruit, short-bread cookies, milk.

Tuesday — Chicken casserole, corn, bread, butter, pears, milk.

Wednesday — Submarines, sauce, soup, cherry dessert, milk.

Thursday — Savory beef over mashed potatoes, tomato slice, bread, butter, fruit, milk.

Friday — Macaroni and cheese, peas, biscuits, butter, apple cobbler, milk.

Breaker! Breaker!

CALL FOR HELP WITH A COBRA CB RADIO

The Cobra Compact 19 is small enough to fit in any car.

For safety, convenience or just plain fun, you need a 2-way radio if you drive today. And we have a complete line of dependable Cobras for immediate installation in anything from a compact car to an 18-wheeler.

COBRA 19 MOBILE
Super-compact. Weighs only 2-1/4 lbs. All 23-channels. Maximum legal power. **\$128.00** with antenna and slide mount

COBRA 29 MOBILE
"The trucker's 2-way." All 23-channels. Dynamic and adjustable squelch. Maximum legal power. **\$188.00**

COBRA 28 MOBILE
With Scan Alert — automatically monitors Emergency Channel 9. You hear all the action on all 23-channels. Maximum legal power. **\$208.00**

Come in and shop our complete line of Cobra CB 2-Way radios.

SALE ENDS SATURDAY, SEPT. 18
WESTERN AUTO
AT CHELSEA LANES
1118 S. MAIN, CHELSEA PH. 475-1721

RARE CLOSE-OUT SALE ON MAYTAG

Unusual Savings on all Discontinued Washers and Dryers. Limited Quantities!

Discontinued model savings
MAYTAG Heavy Duty WASHERS
• All-fabric washer with Permanent Press Cycle • Family size tub with Power Fin Agitator • Choice of 3 water levels • 3 water temps.
ONLY \$305

Discontinued
MAYTAG HaloofHeat DRYERS
• Permanent Press regular and air fluff settings • Maytag HaloofHeat® Dryers dry clothes fast, gently • Easy to clean lint filter.
ONLY \$255

REGULAR MODELS SALE PRICED THIS EVENT!
MAYTAG power module Dishwashers
• Revolutionary Power Module with exclusive Micro-Mesh filter • 3 level washing action virtually eliminates pre-rinsing • Unsurpassed capacity.
ONLY \$359

When You Buy a **DEPENDABLE MAYTAG** We DON'T Try to Sell You an Extra Cost Service Contract

It's Maytags turn to do your dishes.

HEYDLAUFF'S

113 N. MAIN, CHELSEA PH. 475-1221

GAMBLES

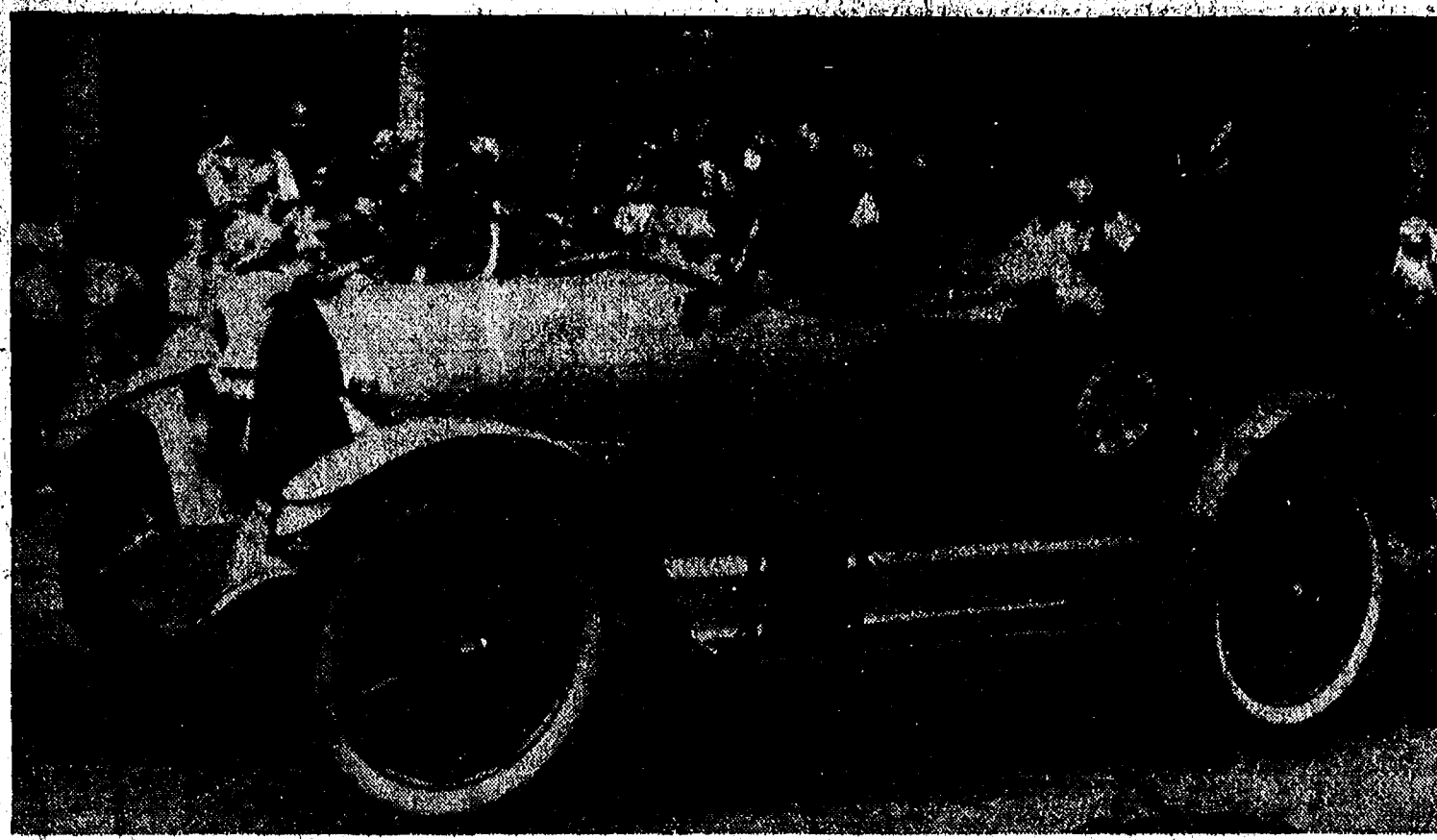
See Our Complete Line of Brand Name Rifles, Shotguns and Quality Hunting Gear

Sportsman's BEST BUYS!

HIAWATHA By Savage
12, 20 or 410 ga.
PUMP SHOTGUN
\$99.95
Save!

SHOTGUN SHELLS
12, 16 or 20 ga.
HIAWATHA By Federal
Box of 25 **\$2.39**
REG. \$2.99

LAY-AWAY NOW for Hunting Season
At SPECIAL SAVINGS
A SMALL DEPOSIT WILL HOLD ANY GUN.



PRIZED 1917 OVERLAND: At home behind the wheel of their 1917 Overland vintage car are Mr. and Mrs. Bruce Waggoner, as they travel down Main St. in Chelsea's Community Fair Parade Saturday, Aug. 28. Waggoner pauses to flash a greeting to spectators. The auto is complete with a radiator cap thermometer which indicates whether or not the radiator is overheating. The gate on the

side serves as a luggage rack. When purchased by Waggoner, the car demanded no restoration, and his only replacement thus far, has been a set of four new 30x3 1/2 inch tires, specially ordered from Chattanooga, Tenn., at a cost of about half the price of the car. The tires are mounted on wheels featuring golden oak spokes.

Fair Premium Horse Show Winners Listed

Many Chelsea residents were among those honored with division championships in the Chelsea Community Fair Premium Horse Show Wednesday, Aug. 25. The competition featured some of the best-groomed stock and riders from the southeastern Michigan area.

In the suckling colt, halter horse category, winners were, 1st, Fred Lewis of Chelsea; 2nd, Debbie Harrison of Chelsea; 3rd, Denise Kilpatrick of Grass Lake; and 4th, Shirley Carlson of Manchester.

The yearling, halter horse class was won by Kathy Hartmann of Milan. Second-place went to Felicia Kuebler of Manchester.

Winners of the Half-Arab, halter horse division were, 1st, Ruth Snyder of Manchester; 2nd, Kathy Hartman of Milan; 3rd, Linda Carlson of Manchester; and 4th, Pauline Kuebler of Manchester.

Top awards in the two-year-old mare, halter horse category went to 1st, Kay Geer of Dexter; 2nd, Kathy Hartmann of Milan; 3rd, Nancy Geer of Dexter; and 4th, Becky Lalley of Clinton.

Winners of the two-year-old gelding, halter horse category were 1st, Marjorie Patterson of Manchester; 2nd, Anita Roderick of Grass Lake.

Other divisions and their winners were as follows.

Three-year-and-over mare, halter horse—1st, Ruth Snyder of Manchester; 2nd, Kathy Ross of Ann Arbor; 3rd, Jenny Bolt of Grass Lake; and 4th, Debbie Eichstedt of Dexter.

Three-year-and-over gelding, halter horse—1st, Linda Carlson of Manchester; 2nd, Kathy Hartmann of Milan; 3rd, Sue Freed of Dexter; and 4th, Nancy Geer of Dexter.

Three-year-and-over grade mares and geldings—1st, Carolyn Ennis of Dexter; 2nd, Kris Becker of Ann Arbor; 3rd, Nancy Geer of Dexter; and 4th, Kay Geer of Dexter.

Pony division, 2 years old and over, halter, under 48 inches—1st, Linda Fehrlie of Ann Arbor; 2nd, Barbara Smith of Chelsea; 3rd, Laura Geer of Dexter; and 4th, Steve Kropf of Chelsea.

Pony division, 2 years old and over, halter, over 48 inches to 54 inches—1st, Cindy Freed of Dexter; 2nd, Gina Van Riper of Chelsea; 3rd, Dena Lindemann of Dexter; and 4th, Sharon Kropf of Chelsea.

Showmanship, horses with tack—1st, Kathy Hartmann of Milan; 2nd, Sue Schultz of Dexter; 3rd, Siri Olson of Ann Arbor; and 4th, Kay Geer of Dexter.

Two-year-old and over under sad-

dle, 14 and under, western pleasure—1st, Shelly Hatt of Chelsea; 2nd, Debbie Eichstedt of Dexter; 3rd, Sue Schultz of Dexter; and 4th, Siri Olson of Ann Arbor.

Two-year-old and over under saddle, 15 and over, western pleasure—1st, Jenny Bott of Grass Lake; 2nd, Rita Douare of Grass Lake; 3rd, Elizabeth Schneider of Whitmore Lake; and 4th, Kathy Hartmann of Milan.

Showmanship, ponies, with tack—1st, Lisa Forward of Ann Arbor; 2nd, Karen Hawk of Clinton; 3rd, Dena Lindemann of Dexter; and 4th, Kelly Buchanan of Whitmore Lake.

Pony walk-trot, 10 and under—1st, Jeannine Lopick of Whitmore Lake; 2nd, Steve Kropf of Chelsea; and 3rd, Barbie Smith of Chelsea.

Horseman, pony—1st, Dena Lindemann of Dexter; 2nd, Lisa Forward of Ann Arbor; 3rd, Kelly Buchanan of Whitmore Lake; and 4th, Laura Geer of Dexter.

Pony under saddle, western pleasure—1st, Kelly Buchanan of Whitmore Lake; 2nd, Lisa Forward of Ann Arbor; 3rd, Steve Botsford of Chelsea; and 4th, Linda Fehrlie of Ann Arbor.

Horseman, 14 and under, horse western—1st, Sue Schultz of Dexter; 2nd, Debbie Eichstedt of Dexter; 3rd, Kari Olson of Ann Arbor; and 4th, Kay Geer of Dexter.

Horseman, 15 and over, horse western—1st, Elizabeth Schneider of Whitmore Lake; 2nd, Dawn Kilpatrick of Grass Lake; 3rd, Kris Becker of Ann Arbor; and 4th, Denise Kilpatrick of Grass Lake.

English pleasure—1st, Siri Olson of Ann Arbor; 2nd, Maret Solari of Ann Arbor; 3rd, Kathy Hartmann of Milan; and 4th, Kelly Buchanan of Whitmore Lake.

Equitation on the flat, 14 and under—1st, Kari Olson of Ann Arbor; 2nd, Dena Lindemann of Dexter; 3rd, Debbie Eichstedt of Dexter; and 4th, Bradley Nixon of Ann Arbor.

Equitation on the flat, 15 and over—1st, Maret Solari of Ann Arbor; 2nd, Kris Becker of Ann Arbor; 3rd, Linda Carlson of Manchester; and 4th, Elizabeth Schneider of Whitmore Lake.

Equitation over fences—1st, Bradley Nixon of Ann Arbor; 2nd, Maret Solari of Ann Arbor; 3rd, Debbie Eichstedt of Dexter; and 4th, Dena Lindemann of Dexter.

Dressage—1st, Dena Lindemann of Dexter; 2nd, Kay Geer of Dexter; 3rd, Bradley Nixon of Ann Arbor; and 4th, Kari Olson of Ann Arbor.

Over-all winners for the day were Ruth Snyder of Manchester, Grand Champion Horse; Cindy Freed of Dexter, Grand Champion Pony; Carolyn Ennis of Dexter, Reserve Champion Horse; and Linda Fehrlie of Ann Arbor, Reserve Champion Pony. The Premium Show Sportsmanship Award was presented to Cindy Freed of Dexter.

Parents of Special Education Children Resume Meetings

Parents of children enrolled in any type of special education program will resume their monthly meetings at 7:30 p.m., the fourth Monday of every month in Room 204 of Chelsea High school for the entire 1976-77 school year. Meetings will begin Monday, Sept. 27. Gladys Buck, chairperson of the organization, has announced that Dr. Virginia Rezmierski, director of special education for Chelsea, Manchester, and Whitmore Lake, will introduce parents to special education programs currently offered in the district, and will field any questions parents may have regarding these programs at the September meeting.

All parents are urged to attend. Any inquiries regarding the meetings should be directed to Mrs. Buck, 475-2609.

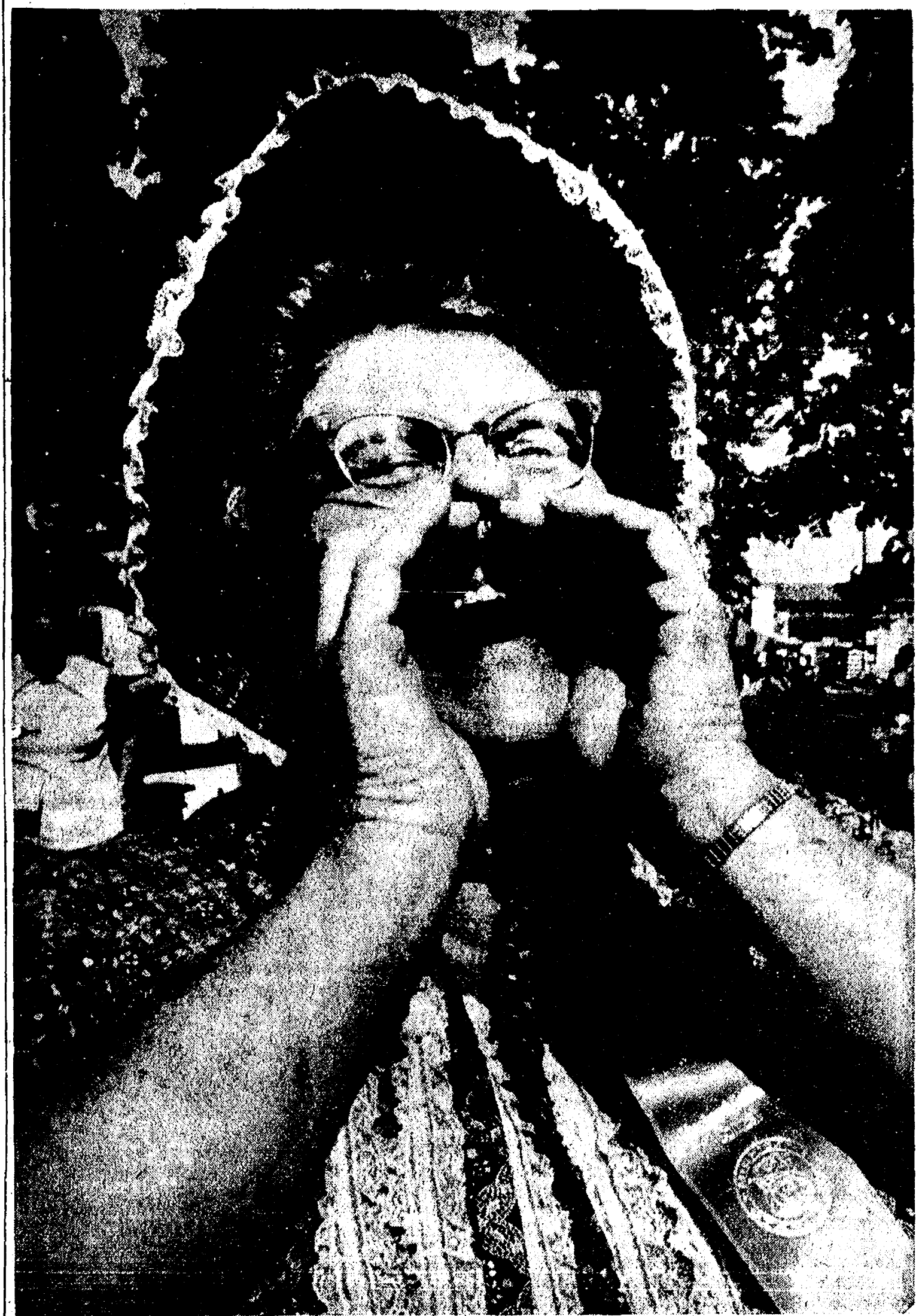
equipment operators!

Here's a man's boot every step of the way! Rugged, handsome, ready for a rough day's work anytime. Easy on the feet, too. Stop by—try on Pecos by Red Wing and be convinced!

RED WING

FOSTER'S MEN'S WEAR

Ph. 475-1606 Chelsea, Mich.



CLLAARRENNCE!! Inza Bristle of Dexter a winner in the same contest during Dexter's Bicentennial celebration. Husband calling, hog calling and sheep shearing were on the list of traditional contests at the Michigan State Fair. Observers say men named Clarence turned around all over the Fairgrounds. Mrs. Bristle was also

Metzger's German RESTAURANT

IMPORTED & DOMESTIC BEERS & WINES

COCKTAILS

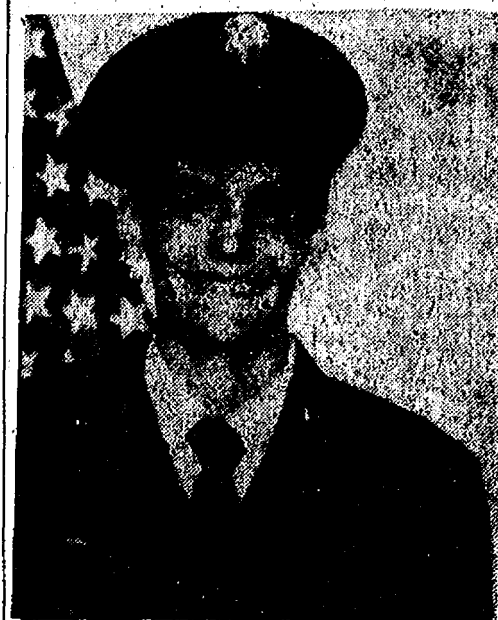
NOW OPEN SUNDAYS

11:30 a.m. 'til 8 p.m.

For more information call 668-8987

203 E. Washington, Ann Arbor

Between S. 4th & 5th Ave.



TIMOTHY J. HINZ

Timothy Hinz Chosen For Air Force Technical Training

Airman Timothy J. Hinz, son of Mr. and Mrs. Herbert A. Hinz of 262 Harrison St., has been selected for technical training at Chanute AFB, Ill., in the Air Force aircraft maintenance field.

The airman recently completed basic training at Lackland AFB, Tex., and studied the Air Force mission, organization and customs and received special instruction in human relations.

Airman Hinz is a 1976 graduate of Chelsea High school.

Subscribe today to The Standard!

RICK'S MARKET

20490 M-52 "The Store with the Spartan on the Door" Phone 475-2898

<p>SALUTO DEEP DISH PIZZAS</p> <p>Sausage or Pepperoni</p> <p>1-Lb., 10-Oz. \$2.29</p>	<p>PET-RITZ 14-OZ.</p> <p>CREAM PIES</p> <p>All Flavors 2 for 89¢</p>	<p>FOUR FISHERMEN</p> <p>COD FILLETS</p> <p>1-Lb. Pkg. \$1.15</p>
<p>SPARTAN WHITE BREAD</p> <p>3 1 1/4-Lb. Loaves \$1.15</p>	<p>ALL BRAND CIGARETTES</p> <p>\$3.89 crtn.</p>	<p>ECKRICH SMOKY-LINKS</p> <p>10-Oz. Pkg. 99¢</p>
<p>BORDEN FUDGE BAR STIX</p> <p>12 Pack 65¢</p>	<p>SALADA INSTANT TEA</p> <p>Hot or Cold</p> <p>3-Oz. Jar 99¢</p>	<p>SUPER SIZE ZEST DEODORANT BEAUTY BAR</p> <p>7 3/4-Oz. 39¢</p>

TUESDAY BAKERY SPECIAL:

See Our Surprise Item Tuesday

RICK'S HOT BREAD DAILY

Weekdays by 3:30 p.m. Sat. & Sun., by 10:30 a.m.

(QUANTITY RIGHTS RESERVED)

State Clean Water Grant Given Chelsea

A state clean water grant of \$1,480 has been awarded to the Village of Chelsea, Representative Michael Conlin (R-23rd District) and Senator Gilbert Bursley (R-Ann Arbor) announced Wednesday, Sept. 1.

The \$1,480 grant represents the state's share of a waste treatment study estimated to cost \$29,800. Chelsea has also been given a federal grant of \$22,200, which covers 80 percent of the project cost.

The project consists of the evaluation of existing waste treatment facilities, the study of alternative treatment works and determination of the most cost-effective waste treatment management system that will meet water quality standards and abate the present pollution problem caused by the Village of Chelsea and portions of Lima and Sylvan townships.

WITHOUT SOAP

A race track is a place where windows clean people.

Mt. Hope Church Plans 'Homecoming'

After a seven-year interlude, the annual Mt. Hope Homecoming will be revived Sunday, Sept. 12.

Planned as a great family reunion, "Mt. Hope Homecoming, 1976" will invite back all those who once lived in the community, but who moved away over the years. Some of the returning "Old Timers" will be cast in leading roles for the day-long event.

For many years, the Mt. Hope school and Mt. Hope Methodist church, located on the corner of Mt. Hope and Seymour Rds., north of Grass Lake, held a joint homecoming each year.

When one-room country schools around Grass Lake consolidated with the local school district, Mt. Hope school was closed. Seven years ago, the Methodist denomination decided to close the church also. Consequently, the Mt. Hope Homecoming was discontinued.

In February, 1976, the church reopened as the Mt. Hope Bible church with a new pastor, the Rev. Robert Brandow. Because of increasing community interest and renewed activism among its congregation, the Mt. Hope Bible

church decided to bring back the annual homecoming event.

This year's ritual of homecoming day activities will co-ordinate with regular church services. Tentatively, the agenda has been set as follows: Sunday school, 10 a.m.; worship service, 11 a.m.; old-fashioned pot-luck, 1 p.m.; informal time of fellowship, afternoon; and evening service of praise, 7 p.m.

Promotion committee members are Mr. and Mrs. Ardell Lantis, Mrs. Robert Baldwin, Mr. and Mrs. Clair Siegrist, and Mr. and Mrs. Joe Siegrist.

NAME OMITTED

The name of Colleen Collins, identifying the senior girl riding on the Senior Class float as part of the Senior Class Fair Queen candidate's court, was omitted from the Senior Class float caption on page 14 of the Sept. 2 issue of The Standard. She is on the far left, and to the back, of the photo.

Sell it with A Standard Want Ad!

SPECIAL!

European Fit

KAZOO DRESS SLACKS

50% Off

Were \$17.00

NOW \$8.50

DANCER'S

Chelsea's Friendly Dept. Store

Ads
Taken
till 1 p.m.
Tuesday

PUT IT IN THE WANT ADS FOR RESULTS

Just
Phone
475-1371

WANT ADS

The Chelsea Standard

WANT AD RATES
PAID IN ADVANCE—All regular advertisements, 75 cents for 25 words or less, each insertion. Count each figure as 4 words. For more than 25 words add 3 cents per word for each insertion. "Blind" ads or box number ads, 55c extra per insertion.

CHARGE RATES—Same as cash in advance, with 25 cents bookkeeping charge if not paid before 1 p.m. Tuesday preceding publication. Pay in advance, send cash or stamps and save 5 cents.

DISPLAY WANT ADS—Rate, \$1.40 per column inch, single column width only. 8-point and 14-point light type only. No borders or boldface type. Minimum 1 inch.

CARDS OF THANKS or MEMORIALS—Single paragraph style, \$1.50 per insertion for 50 words or less; 3 cents per word beyond 50 words.

COPY DEADLINE—1 p.m. Tuesday week of publication.

ERRORS—Advertisers should check their ads the first publication. The newspaper will not be liable for failure to publish an ad or any typographic errors in publication except to the extent of the cost of the ad for the first week's insertion. Adjustment for errors is limited to the cost of portion of the ad wherein the error occurred.

TOMATOES, sweet onions, winter squash and other vegetables. Open Friday, Saturday and Sunday 10 to 6. One mile north of Chelsea, corner Waterloo and Werkner Rds. Isadore Wengel. x13

PIANO TUNING, Chelsea and area. Facilities for reconditioning and rebuilding. Used piano sales; reconditioned grands and verticals. E. Ecklund, 426-4429. x500f

Sand Gravel

KLINK EXCAVATING

Bulldozer - Backhoe
Road Work - Basements
Trucking - Crane Work
Top Soil - Demolition
Drainfield - Septic Tank
Trenching, 5" up

Industrial, Residential, Commercial
CALL 475-7631 x13f

STEP UP TO KOZMA CONSTRUCTION

And
Step
Down
In
Price

LICENSED
BUILDER
FREE ESTIMATES
COMPLETE
CONSTRUCTION
SERVICES

CALL
LEN KOZMA
475-7452 x29f

BOWLING SHIRTS

ORDER NOW
Strieter's x13

HELP WANTED—Telephone solicitors. Good pay plus bonus. Call Nancy or Joe at 426-4040 between 9:30 a.m. to 1:30 p.m. or 5 p.m. to 9 p.m. x14

WANT ADS

PATCHING AND PLASTERING
Call 475-7489. x83f

C—ustom Built Homes

O—hi We Remodel too

U—can count on us

N—o Job Too Small

T—rim Inside & Out

R—ough-In Only If

Y—ou Want to Finish

S—iding Aluminum, 5" Gutters

I—mmediate Attention

D—ALE COOK & CO.

E—stimates, Free

BUILDERS

Please Call

475-8863

DALE COOK x17f

GEORGE W. SWEENEY HEATING

Licensed Contractor
Furnaces, air conditioning,
and sheet metal work.

Phone 475-1867 x20f

CAR RENTAL by the day, week-end, week or month. Full insurance coverage, low rates: Call Lyle Chriswell, at Palmer Motor Sales, 475-1301. x25f

Fireplace Builder

Field stone mason, block and brick mason, tuck pointing.
FREE ESTIMATES
Call 475-8025 after 3 p.m.

Patrick Grammatico x40f

J. R. CARRUTHERS LICENSED RESIDENTIAL BUILDER

CUSTOM HOMES
ADDITIONS/FIREPLACES
PATIO
ROOFING/SIDING/REPAIRS

475-7234

CHELSEA x30f

LOWREY BERKSHIRE deluxe organ, with home study course. \$1,800. Ph. 994-6194. x52f

HORSESHOEING—Experienced horseshoer now shoeing in area. Bob Smithers, (517) 851-8479. x45f

TEACHERS, accountants and persons with technical talent and communicative skills who enjoy people and figures. Be a tax counselor with TCA. We train, no experience necessary. High commission. Call 439-8904 or write 393 Greentree, Milan, Mich. 48160. x14

FOR SALE—14-ft. fiberglass runabout, 40 h.p. Evinrude, \$275. Good running condition. Call 475-7408. x13

FOR SALE—Mustang, 1967, 6-cyl., auto., dark blue, good tires. Transportation. \$295. Ph. 426-4508 or 449-4157. x13

YARD SALE—Sat., Sept. 11, 9 to 5, 6103 Joy Rd., Dexter. End tables, chairs, small appliances, clothes, dishes, baby furniture, pictures, lamps, misc. Cash only. x13

WANT ADS

LEONARD REITH

Master Plumber

Licensed Electrician

Hot Water Heat

18238 N. Territorial

Rd.

Chelsea, Mich. 48118

Phone: 475-2044 x52f

FORD '74 Econoline van. Original finish, mechanically perfect. Far above average. Palmer Ford, 475-1301. x13

GARAGE SALE—Thurs., Fri., Sat., Sept. 9, 10, 11, 9 a.m. to 6 p.m. Antiques, chairs, sweeper, frames, buttons, prints, adv. items, books, toys, records, maps, match covers, sports items, stamps, jewelry, kitchen items, glassware, knick-knacks, collectors items, fix-it stuff, much miscellany, Ohio items on Saturday. Mile west of Dexter, off Chelsea-Dexter Rd. Second house on left. 2930 N. Paik-er Rd. x13

CHELSEA

VILLAGE OF PINCKNEY—Large trees, corner lot, older remodeled 4-bedroom home, large kitchen, formal dining room, fireplace in living room, low 30's.

GREGORY AREA—\$49,900 for this lovely farm house on 15 acres, new wiring, plumbing, heating and well, 4 bedrooms, 2 baths, country kitchen completely remodeled.

OWNER LEAVING STATE, must sell. Over 1,800 sq. ft., like new 3-bedroom on water, family room, 1½ baths, 2½-car garage, Portage Lake area, low 50's.

\$35,900—Village of Chelsea, 3 bedrooms, dining room, family room with fireplace, country kitchen, screened porch, 2-car garage.

LOTS OF SHADE, good garden spot, 3 bedrooms, dining room, 2-car garage, Village of Stockbridge, \$33,900.

CHELSEA FARMS

147½ ACRES, Waterloo Recreation Area, 3-bedroom remodeled home, Chelsea schools.

80 ACRES—Chelsea schools, good location, beautiful surroundings, beautiful home.

59 ACRES—Located between Chelsea and Dexter on blacktop road, 5-bedroom home.

FRISINGER REALTORS

Chelsea 475-8681

Eves:
Paul Frisinger 475-2821
Herman Koehn 475-2613
Bob Koch 426-4754
George Frisinger 475-2903 x12f

BY OWNER

(desperate).

10 or 20 acre
Country Estate

New, 4-bedroom, 2-bath, 9-room house. Carpeted, full basement, garage, central gas heat, fireplace. \$64,900

Cash - Terms - Trade
(1) 428-9240 x12f

YES

WE ARE MAKING
LONG-TERM FARM
REAL ESTATE
LOANS

SEE US



P. O. Box 7006
Ph. 769 2411 3645 Jackson Rd.
Ann Arbor, Mich. 48103

WANT ADS

VACUUM CLEANERS

Authorized Electrolux
sales and service.

James Cox

428-8444, or 428-8686

118 Riverside Dr., Manchester x48f

Complete

Body Repair

Service

Bumping - Painting

Windshield and Side Glass

Replacement

Free Pick-up & Delivery

Open Monday Until 9

CONTACT DON KNOLL

FOR FREE ESTIMATE

Village

Motor Sales, Inc.

CHRYSLER - DODGE

PLYMOUTH - DODGE TRUCKS

Phone 475-8661

1185 Manchester Rd., Chelsea

Hours: 8 a.m. to 5:30 p.m.

Tues. thru Fri. Until 9 Monday,

9 a.m. to 1 p.m. Saturday x14f

Headquarters for

RED WING

WORK SHOES

Foster's Men's Wear x40f

ACT NOW—Turn spare time into \$\$\$! Be a SANTA'S Demonstrator, earn commissions up to 30%—OR—have a Toy & Gift Party in your home and earn FREE Gifts! Our 29th Year. Call or write SANTA'S Parties, Avon, Conn. 06001. Phone 1 (203) 673-3455. ALSO BOOKING PARTIES. x18

For Rent

OFFICE SPACE

IN DEXTER

NEW, carpeted, air-conditioned, up to 800 sq. feet. Reasonable. Call 426-3933, 9 a.m.-5 p.m. x1f

MUSTANG II '74 Ghia, air conditioning, A cut car. Absolutely like new inside and out. References. Palmer Ford, 475-1301. x13

WATERLOO REALTY
ONLY \$24,500! And only 20 minutes from Chelsea. Two large bedrooms, 14'x20' living room, country-size kitchen, oil forced air furnace. Easy terms. Quick possession.

NEWLY-PAINTED 3-bedroom cottage on large oak-wooded lot with access to Patterson Lake. \$15,000. Land contract possible with \$3,000 down.

IMPOSSIBLE TO SEE from the road, the hidden site for this partially built basement facing a small natural pond. New 4" well, new approved septic system on 13 acres in Chelsea School District. \$28,000.

SMALL HOME with full basement, great expansion possibilities; one-car garage, shade trees, plus new furnace, wiring and plumbing. Young orchard will provide you with lots of fruit. Situated on 12 acres which can be divided. Chelsea schools. \$40,000.

RUSH LAKE ACCESS—Completely usable building lot with pretty view of lake plus beautiful wooded park-like access. Hamburg township. Only \$6,500. Land contract possible.

HEAVILY WOODED 2.3 acres with 300 ft. frontage on blacktop road, near State Land. Surveyed. Waterloo township. \$7,300.

SECLUSION AND PRIVACY are yours on this surveyed 10 acres with some woods. Only ¼ mile off M-52, 10 minutes from Chelsea. \$15,000. L.C. possible.

40 ACRES all tillable land with frontage on two roads. Creek for irrigation makes this ideal for truck farm. Waterloo township. \$34,500 cash or land contract.

DEXTER AREA near Stinchfield Woods, 110 acres, hills, light woods, meadow, semi-private deep fishing lake. Ideal for exclusive retreat. \$1,500 per acre.

WATERLOO REALTY

355 Clear Lake

JOANN WARYWODA, BROKER

Phone 475-8674

Evenings:

Jerry Gondek 475-8283

Paul Erickson 475-1748

Carol Lakatos 475-7123

Sue Lewy 475-2377 x13

WANT ADS

Automotive

Rust Proofing

Cars and Trucks

Village

Motor Sales, Inc.

CHRYSLER - DODGE

PLYMOUTH - DODGE TRUCKS

Phone 475-8661

1185 Manchester Rd., Chelsea

Hours: 8 a.m. to 5:30 p.m.

Tues. thru Fri. Until 9 Monday

9 a.m. to 1 p.m. Saturday x14f

Demonstrators

'76 ASPEN SE station wagon, 318, auto., p.s., p.b., air cond., stereo, speed control. SAVE!

'76 PLYMOUTH Fury Salon 4-dr., 318, auto., p.s., p.b. \$4195

'75 DODGE D-200, 318, 3-speed, p.b., 18,100 miles \$3395

'75 DODGE Tradesman van, 318, auto., p.s., p.b., AM-FM, Ziebart, 12,700 miles \$4395

'75 RAMCHARGER, 2-wheel drive, 360, auto., p.s., p.b., air cond., roll bar, white wheels \$5195

'74 DODGE CB-300 Kary van, 318, 3-speed, p.b. \$3295

'74 DODGE-TRAVCO surfer van, 318, auto., p.s., p.b., carpeted, 14,700 miles \$3995

'74 DODGE D-100, 318, auto., p.s., p.b., dual tanks \$2995

'74 DODGE ½-ton, 6-cyl., 3-speed, low mileage \$2595

'74 DODGE D-200 Club Cab, 318, auto., p.b., air cond., AM-FM, aux. tank, cover, 31,000 miles \$3995

'73 FORD 1-ton stake, 380, 4-speed \$1795

'75 PLYMOUTH Voyager s.p.o.r.t. wagon, 380, auto., p.s., p.b., air cond., speed control, radials, 16,900 miles \$5795

'74 DODGE Coronet 4-dr., 225, auto., AM radio, radial tires, 13,500 miles \$2995

'74 PLYMOUTH Fury I 4-dr., V-8, auto., p.s., p.b., air \$1195

'73 CHARGER 2-dr. hardtop, V-8, auto., p.s., 26,600 miles \$2395

'73 DODGE Royal Sportsman, 360, auto., p.s., p.b., air cond., AM-FM, aux. heater, speed control \$3395

'73 BUICK Estate Wagon, V-8, auto., p.s., p.b., air cond. \$1995

'73 CAPRI coupe, V-6, 4-speed, AM-FM, sun roof, radials \$2395

'72 PLYMOUTH Fury III 2-dr. hardtop, 360, auto., p.s., p.b., air cond. \$1495

'72 CHEVY Kingswood station wagon, 360, auto., p.s. \$1595

'72 CHEVY Nova 2-dr., 6-cyl., 3-speed \$1795

'70 VALIANT 4-dr., 6-cyl., auto., p.s. \$595

'65 BUICK 2-dr., V-8, auto., p.s. \$150

Village

Motor Sales, Inc.

CHRYSLER - DODGE

PLYMOUTH - DODGE TRUCKS

Phone 475-8661

1185 Manchester Rd., Chelsea

Hours: 8 a.m. to 5:30 p.m.

Tues. thru Fri. Until 9 Monday x13f

Annual Chelsea

FIREMEN'S

BALL

Saturday, Oct. 2

at Fair Service Center

9:30 p.m. to 1:30 a.m.

Dancing to music by

THE RESEARCHERS

\$8.00 per couple

Tickets from any Chelsea Fireman

or Kusterer's Food Market x16

FOR SALE—Frigidaire window

air conditioner, very good condition, 12,000 BTU, vanity base with Corleau marble top, 24"x14 inches. Never been installed, \$65.

Culligan water softener, very good condition, \$150. 428-4492. x14

FOR SALE—1973 Chevelle Malibu, V-8, automatic, power steering, power brakes, AM radio with power, 40,000 actual miles. Good condition. Call 475-2346. x14

WANT ADS

FOR RENT—Fair Service Center for meetings, parties, wedding receptions, etc. Weekdays of week-ends. Contact John Wellnitz, phone 475-1518. x31f

NOW

Full Time

Complete

Body Shop

Service

Stop in For An Estimate

PALMER FORD

222 S. Main St.

475-1301 x27f

CHEV '69 ½-ton pick-up. Value

LITTLE WANT ADS! BIG PLUSES FOR BIG RESULTS!

JUST PHONE
475-1371

WANT ADS

- YOUNG -

We list and sell lake, country and town properties. Eugene Young, Real Estate & Builder, 878-3792, 11506 Dexter-Pinckney Rd., Pinckney 48169. x341f

CAR & TRUCK LEASING. For details see Lyle Christwell at Palmer Motor Sales, 475-1301. 491f

R. L. BAUER Builders

LICENSED AND INSURED Custom Building

Houses - Garages
Pole Barns
Roofing - Siding
Concrete Work

FREE ESTIMATES

Call 475-1218

NEED A ROOF? Call Toth Building & Remodeling, (313) 499-4176. x17f

GARAGE SALE - Sept. 10-11, 9 a.m. to 6 p.m. 7841 Webster Church Rd. x13

SEE US for transit mixed concrete. Klump Bros. Gravel Co. Phone Chelsea 475-2530, 4920 Loveland Rd., Grass Lake, Mich. x401f

ROOMS by day, week or month. Excellent for the single man or retired. Sylvan Hotel, Chelsea. Ph. 475-2911. x311f

KETO USED CARS

6000 GRAND - DEXTER

426-4535

CARS BOUGHT AND SOLD

x381f

A fine selection of

New and Used Cars

for immediate delivery

Harper Pontiac

Sales & Service

475-1306

Evenings, 475-1808

401f

CARPENTER WORK - Inside or out. Mr. Coburn, 475-2893. 121f

GAR - NETT'S

Flower & Gift Shop

Your Friendly Florist

112 E. Middle St., Chelsea

PHONE 475-1400

Funeral Flowers

Wedding Flowers

Flowers (arranged or boxed)

Potted Flowering Plants

Green Plants - Corsages

WE DELIVER

x21f

CUSTOM SEWING and alterations. Ph. after 2:30 p.m., 475-3745. 301f

ROOFING SPECIALIST - All types of roof repairs, homes, barns, commercial. Insurance repairs. Asphalt shingles, hot built-up roofing, cedar-shingle tile-asbestos. Awnings and porch enclosures. Call Joe Hayes for free estimates. Manchester, 428-5520. x221f

BUILDING LOT - 5 acres. \$14,000. Terms. Ph. 475-1743. 451f

WANT ADS

WEDDING STATIONERY - Prospective brides are invited to see our complete line of invitations and wedding accessories. The Chelsea Standard, 300 N. Main. Ph. 475-1371. 81f

McCulloch

Portable Generators

Chain Saws

WE SELL, SERVICE,
SHARPEN AND TRADE.

Chelsea Hardware

FOR REAL DOLLAR SAVINGS be sure and see us before you buy any new or used car. Palmer Motor Sales, Inc. Your Ford Dealer for over 60 years. 21f

A NEW HOME for the young executive who enjoys entertaining. Your friends will envy you in this lovely 3-bedroom, 1 1/2-bath ranch home. It features fireplace, bar-b-q deck, open living, 2-car attached garage, spacious basement for the ping pong and pool playing enthusiasts, and many other exciting architectural features. Carefully selected to capture the beauty of the site. 8 miles north of 1-94. Chelsea Homes, 475-2828. Call WEBER HOMES, 475-2828. "We're Builders." x21f

FOR SALE - Compact circulating gas heater. Good for garage or cottage. Call 475-8407. x21f

DON'T THROW IT AWAY - Sell it to A&K Mower Service of Chelsea. We buy, sell and repair all types of lawn mowers. We also repair all types of small gas motors; rototillers, chain saws, riding lawn mowers. You call, we haul. Free pick up and delivery. 475-2923. x401f

EVANS JANITORIAL SERVICE has part-time positions available for the Chelsea area. Call 971-8263 after 6 p.m. 31f

Old Orchard

Furniture Refinishing

ANTIQUES RESTORED

Old finish removed from wood or metal safely and economically.

513 Old Orchard

Stockbridge, Michigan 49285

(517) 851-8713

FOR SALE - 1970 Catalina 2-door. Like new. New tires, new brakes, perfect condition. Call 475-7251 after 6 p.m. x14

PUPPIES - 6 weeks old, mother. Golden Retriever, father traveling sneak. Call 475-8780 after 3:30 p.m. x13

FITZSIMMONS

EXCAVATING

Sand - Gravel

BLACK DIRT

BASEMENTS - BULLDOZING

SEPTIC TANKS - DRAIN FIELDS

BACK HOE - TRUCKING

26 YEARS IN BUSINESS

IN CHELSEA AREA

Call "Bob" - 475-2010

x29

FOR SALE - Ashley wood stoves. Hackney Hardware, 8105 Main St., Dexter, 426-4007. x14

WANT ADS

BRICK MASON - Brick work, block work, fireplaces, chimney repairs, homes and additions. Ph. 475-2584. x441f

PAINTING - Exterior and interior. Quality workmanship, free estimates, references, reasonable rates. Ph. (517) 851-7055. x481f

REDUCE excess fluids with Fluidex tablets, only \$1.89. Chelsea Pharmacy. x17

REAL ESTATE

THIS HOME has been made a little bit better with a new well and pump. Located in the Village of Bridgewater on a 66'x220' lot. It includes 4 spacious bedrooms, 1 1/2 baths, dining room and full basement. \$42,500. Saline schools.

REDUCED to \$46,500 this could be the home you've been looking for. 4 bedrooms, 1 1/2 baths, dining room, full basement and a 24'x30' garage on a 85'x210' lot in the Village of Manchester.

PIONEER LIVING in this small 2-bedroom house on Norvell Lake that's just been listed. 55'x17' lot in the Napoleon school area. Only \$11,000. Completely furnished with 2 boats. Good summer cottage.

COUPLES, Young and Old - This could be the home for you! For \$36,250 you get a cute 3-bedroom ranch with 1 bath and dining area that's only 2 years old on 1 acre. Excellent condition. Manchester schools.

HERE'S A TRULY NICE home in Manchester close to the schools. 3 bedrooms, 1 bath, dining room and full basement on a 460'x145' corner lot. 14'x16' shed included. \$42,500.

A HAMMER & SAW and a little initiative is all this 2-bedroom ranch needs. Situated on a 50'x160' lot it could be yours for only \$17,500. Great starter home.

2 ACRES available west of Manchester on a black top road. Sandy soil and some small trees. \$7,500. Perfect for building.

10 ACRES in the Grass Lake school area. \$9,800. 8 acres are wooded and it's part fenced. Was part of a larger farm.

BRING YOUR BUSINESS or start a new one on this 7.22 acre parcel on old US-12. 3 miles west of Chelsea. Prime site for development. \$50,000.

OFFICE: 428-8046

Eves and week-ends:

James Mann 428-8074

Ellis Pratt 428-8562

Spear & Assoc., Inc.

REALTORS

122 W. Main St., Manchester

Office Phone 428-8046

13

PAINTING -

INTERIOR or EXTERIOR

WALLPAPERING

HOME REPAIRS

Call

HOME ART

for a free estimate

475-1175

x14

GARAGE SALE - 11899 Trinkle Rd. between Lima Center and Fletcher Rd. Tent, packs, and camping goods, elec. range, chain saw, elec. motors, many baby items and equipment. Snowmobile and suits and many misc. items. Some antiques. Thurs., Friday, Saturday, 9 a.m. to dark. x13

1974 SUPER BEETLE Volkswagen with automatic transmission. 26 mpg. Like new. Asking \$2,300, or best offer. 428-4149. x13

GARAGE SALE - Furniture, glassware, quilts, clothing and many items too numerous to mention. Some antiques. Sept. 9, 10, 11, 9:30 to 6 p.m. at 621 N. Main, Chelsea. x13

country beautiful

-Quality Materials

-Professional Workmanship

-Country-Style Beauty

"Your Lot or Ours"

We Do Everything For You From Financing To Clean-Up At Price You Expected To Pay ... Appointment Anytime

475-2828

12290 Jackson Rd., Chelsea

Call 475-2828

12290 Jackson Rd., Chelsea

Call 475-2828

Call 475-2828

Call 475-2828

Call 475-2828

Call 475-2828

Call 475-2828

Call 475-2828

Call 475-2828

WANT ADS

SEAMLESS ALUMINUM eaves, troughs, roofing, siding, and carpentry work of all kinds. Experienced installers. All work guaranteed. For free estimate, call R. D. Kleinschmidt Co., 428-8836. x311f

WANTED - Hauling jobs, junk, wood, almost anything. Call 475-8984. 301f

TRAVEL TRAILERS - 13-ft. and up; 10-ft. trailers. Jon R. Jones Trailer Sales, Gregory, Mich. Phone 498-2655. 431f

HOST, the beautiful way to dry clean carpets. beautifully. Rent the HOST Machine. Merkel Home Furnishings, 475-8621. x13

COUNTRY AUCTION

FARM MACHINERY - ANTIQUES MISCELLANEOUS

Having sold our farm, we will sell the following at Public Auction at 1741 N. Lima Center Road, Dexter, Michigan. Take Dexter-Chelsea Road 4 miles east of Chelsea or 4 miles west of Dexter, then south on Lima Center Road.

Sunday, September 12

Commencing at 1:00 p.m.

Maple single bed, chest of drawers (nice), antique oak bed, older bed, with glass doors, 2 end tables, Hide-A-Bed couch, occasional chairs, beautiful lamps, walnut chair - cane bottom with side arms, old radio cabinet, cane bottom maple chair, metal storage cabinet, secretary desk, Duncan Phyfe table and 6 chairs, Duncan Phyfe buffet, picture frames, old spooner, celery dish, wine glasses, tea set, etched stemware, instamatic camera, purple amethyst vase, Japanese gods, old books, blankets, fruit jars, pots, pans, nice glass, storage cabinet, pie safe, porcelain coffee pot, glass butter churn, roaster, butter crock, 15-gallon crock, library table, Sears freezer (12 cu. ft.), nice hump back trunk, oak mirror, oak commode with bevel glass, oak library desk, magazine rack, 3 quilts, 2 brass floor lamps, 2 antique child's chairs, brass pot, cedar chest, plant stand, vacuum sweeper, wrought iron furniture (table, chair, lounge).

Saws, shovel, trailer, two 2-bottom plows, steel wheel, wood wheel 11-hole grain drill, 4 rolls snow fence, 1947 Allis-Chalmers W.D. tractor with cultivator, 3-section drag, 40' aluminum ladder, bag cart, brass scales, burlap bags, English saddle, 3 buck saws, fire-place wood, corn sheller, chicken crates, round water tank, chicken waterers and feeder, log chains, 4 house jacks, stone boat, 2 rotary lawn mowers, traps, aluminum step ladder, scissor, work harness, carpenter chest, hog scrapers, tarps, garden tools, Mercury '55 4-cylinder outboard motor (works), 7 1/2 Scott-Atwater outboard motor, runs good, pile of pipe, some new, 3 trunks, 1923 trunk for Reo auto, 15-2x8 planks, extension bumper for pick-up, Craftsman jigsaw.

MANY MORE ITEMS!

Owner: Frank Koselka

Braun & Helmer

Auction Services

LLOYD R. BRAUN

Ann Arbor, 665-9646

JERRY L. HELMER

Plymouth, 453-4109

Inspection day of sale.

Terms: Cash or Check.

Nothing removed until settled for.

Not responsible for accidents.

Lunch on grounds. x13

HOME FOR SALE

In Chelsea

3-bedroom, 1 1/2-bath, formal dining room, den or TV room. Convenient location, good neighborhood. Rear deck, 1st floor laundry.

CALL OWNER AT 475-2828

x131f

BUSHNELL

LOW DOWN PAYMENT and immediate occupancy on this new 3-bedroom, 2 1/2-bath home on 1 acre of land. Full basement. 2-car garage. No drive-bys please. Must see. \$38,500.

LARGE CENTENNIAL FARM home with 10 acres or more. Close in to Chelsea. Lovely setting. Outbuildings.

LAND - Secluded building sites yet within sight of village of Chelsea. Low down payment. Easy terms.

Bushnell Realty

475-7180

13

WANTED TO BUY or rent, secluded country house, stone or brick, 4 bedrooms, 2 baths, 10 acres or more. Out-building, trees, within 30 minutes of Ann Arbor. Reply post office box 1748, Ann Arbor 48103 or after 6 p.m., 475-9444. x15

475-9444

475-9444

475-9444

475-9444

475-9444

475-9444

475-9444

475-9444

475-9444

475-9444

475-9444

475-9444

475-9444

475-9444

475-9444

475-9444

475-9444

475-9444

475-9444

475-9444

475-9444

475-9444

475-9444

475-9444

475-9444

475-9444

475-9444

WANT ADS

BEEF - Locally com fed. By quarter or side. Ready for your freezer. Ph. 426-4022 after 6 p.m. x421f

ALBER FARMS Orchard & Cider Mill

Sweet cider, maple syrup, barrels and kegs. Apples, now picking. Wealthies.

Hours: 9 a.m. to 6 p.m.

13011 Bethel Church Rd.

428-7758

x111f

'69 DODGE MONACO for sale. 4-door, reliable transportation, \$1500. Call after 3 p.m., 475-8768. 13

FOR SALE - Baby crib, \$10. Call 475-7061. 13

GARAGE SALE - Mostly good used clothing, some household, sports and misc. items. Tuesdays in Sept., 9 a.m. to 6 p.m. North St. 13

BY OWNER - 30 acres, secluded private lake for swimming and fishing. Mile east of Manchester. 8% land contract possible. \$42,000. Ph. 428-8201. x13

GRAND PRIZE 1971 2-door hardtop. Loaded, excellent condition, one owner. Best offer. Ph. 475-2536. x16

HELP WANTED - RN or LPN, full-time and part-time positions available. Skilled nursing care facility. Call collect 517-851-7700 between 9 a.m. and 5 p.m. x121f

THREE GRADUATE STUDENTS seek house in country; Chelsea and surrounding areas. Good references. Call collect, (313) 434-0441 until 3 p.m. x13

FOR RENT with option to buy, selected 3-bedroom ranch with walk-out basement. 1 1/2 acres with possible pond south of Stockbridge on main highway. Good working record and character references a must. For information write Box No. SE-2 in care of Chelsea Standard, Chelsea. x13

CUSTOM BUILDING

LICENSED & INSURED

FREE ESTIMATES

TOTAL

CONSTRUCTION SERVICES

-Homes, factories, warehouses

-Pole buildings

-Garages

-Remodeling - Additions

-Aluminum Siding

-Roofing

-Masonry Work, fireplaces, block work, patios, etc.

Fair Horse Show Winners Named

Competitors in the Chelsea Community Fair Saturday Horse Show, Aug. 28, vied for top honors in a field distinguished by 30 divisions geared to challenge their equestrian abilities. Awards were presented to the first six finishers in each class.

Divisions and their winners were as follows.

Fitting and Showing, ponies, 12 and under—1st, Donna Rutkowski of Dexter; 2nd, Jim Morand of Chelsea; 3rd, Linda Fehrlie of Ann Arbor; 4th, Susan Fehrlie of Ann Arbor; 5th, Lisa Hurd of Grass Lake; and 6th, Kelly Buchanan of Whitmore Lake.

Halter, Half Arab, yearlings and over—1st, Kathy Hartmann of Ypsilanti; 2nd, Tina Carlson of Manchester; 3rd, Shirley Lowell of Ann Arbor; 4th, Raylene Ritter of Pinckney; 5th, Carolyn Hutchings of Dexter; and 6th, Patty Rawson of Dexter.

Halter Mares, horses 2 years and over—1st, Siri Olson of Ann Arbor; 2nd, Nancy Geer of Dexter; 3rd, Jenny Bott of Grass Lake; 4th, Kathy Hartman of Ypsilanti; 5th, Carolyn Hutchings of Dexter; and 6th, Becky Lallely of Clinton.

Halter Geldings, horses 2 years and over—1st, Tina Carlson of Manchester; 2nd, Kathy Hartmann of Ypsilanti; 3rd, Jennifer Kwiatzke of Ann Arbor; 4th, Kerri Keniston of Saline; 5th, Raylene Ritter of Pinckney; and 6th, Tracy Gardener of Chelsea.

Halter, grade horses 2 years and over—1st, DeAnna Bowerman of Milan; 2nd, Ruth Rawson of Dexter; 3rd, Sue Freed of Dexter; 4th, Kelly Knepper of Ann Arbor; 5th, Beverly Conklin of Grass Lake; and 6th, Lisa Forward of Ann Arbor.

Western Horsemanship, ponies 12 and under—1st, Jim Morand of Clinton; 2nd, Donna Rutkowski of Dexter; 3rd, Linda Fehrlie of Ann Arbor; 4th, Susan Fehrlie of Ann Arbor; 5th, Kelly Buchanan of Whitmore Lake; and 6th, Keith Pastorino of Ann Arbor.

Western Horsemanship, horses, 14 and under—1st, Deborah Eichstedt of Dexter; 2nd, Judi Poet of Manchester; 3rd, Lisa Forward of Ann Arbor; 4th, Raylene Ritter of Pinckney; 5th, Kelly Knepper of Ann Arbor; and 6th, Shelly Hatt of Chelsea.

Western Horsemanship, horses, open—1st, Keri Keniston of Saline; 2nd, Jim Moore of Dexter; 3rd, Julie Tite of Chelsea; 4th, Lynn Robertson of Ann Arbor; 5th, Kathryn Ross of Ann Arbor; and 6th, Steve Robbins of Chelsea.

Western Pleasure, horses, 14 and under—1st, Raylene Ritter of Pinckney; 2nd, Deborah Eichstedt of Dexter; 3rd, Judi Poet of Manchester; 4th, Shelly Hatt of Chelsea; 5th, Ruth Rawson of Dexter; and 6th, Kelly Knepper of Ann Arbor.

Western Pleasure, horses, open—1st, Lou Richards of Dexter; 2nd, Lynn Robertson of Ann Arbor; 3rd, Keri Keniston of Saline; 4th, Teresa Helle of Plymouth; 5th, Jamie Collins of Saline; and 6th, Nancy Mock of Dexter.

Western Pleasure, ponies, 12 and under—1st, Susan Fehrlie of Ann Arbor; 2nd, Jim Morand of Clinton; 3rd, Linda Fehrlie of Ann Arbor; 4th, Donna Rutkowski of Dexter; 5th, Kelly Buchanan of

Whitmore Lake; and 6th, Laura Geer of Dexter.

English Horsemanship, 14 and under—1st, Kim Wolf of Whitmore Lake; 2nd, Siri Olson of Ann Arbor; 3rd, Ruth Rawson of Dexter; 4th, Kari Olson of Ann Arbor; 5th, Kelly Buchanan of Whitmore Lake; and 6th, Marie Abrass of Dexter.

English Horsemanship, 15 and over—1st, Julie Tite of Chelsea; 2nd, Judy Ward of Chelsea; 3rd, Elizabeth Schneider of Whitmore Lake; 4th, Carolyn Hutchings of Dexter; 5th, Maret Solari of Ann Arbor; and 6th, Lynn Robertson of Ann Arbor.

Pony Pleasure Driving, 18 and over—1st, Laura Geer of Dexter; 2nd, Kari Hutchings of Dexter; 3rd, Chris Ford of Chelsea; and 4th, Bob Beeman of Chelsea.

Hunter Over Fences, 2'6" only, novices—1st, Judy Ward of Chelsea; 2nd, Siri Olson of Ann Arbor; 3rd, Dena Lindemann of Dexter; 4th, Bradley Nixon of Ann Arbor; 5th, Maret Solari of Ann Arbor; and 6th, Carolyn Hutchings of Dexter.

English Jumping, Open—1st, Lori Cook of Whitmore Lake; 2nd, Kim Wolf of Whitmore Lake; 3rd, Arlene Haeussler of Saline; 4th, Dena Lindemann of Dexter; 5th, Elizabeth Schneider of Whitmore Lake; and 6th, Kay Geer of Dexter.

Boot Race, ponies, 12 and under—1st, Danny Teachout of Stockbridge; 2nd, Beth Michalak of Manchester; 3rd, Steve Botsford of Chelsea; 4th, Marjorie Rawson of Dexter; 5th, Amy Foster of Grass Lake; and 6th, Laura Racie of Grass Lake.

Pleasure Hunt Seat, open—1st, Kristen Cowan of Ann Arbor; 2nd, Siri Olson of Ann Arbor; 3rd, Judy Ward of Chelsea; 4th, Maria Abrass of Dexter; 5th, Deborah Eichstedt of Dexter; and 6th, Kelly Buchanan of Dexter.

Pleasure Saddle Seat, open—1st, Linda Carlson of Manchester; 2nd, Patty Rawson of Dexter; 3rd, Kathy Hartman of Ypsilanti; 4th, Chrissie Shearer of Dexter; 5th, Lynn Eitel of Dexter; and 6th, Raylene Ritter of Pinckney.

Ride and Lead, ponies, 12 and under—1st, Steve Botsford of Chelsea; 2nd, Danny Teachout of Stockbridge; 3rd, Brenda Annabel of Stockbridge; 4th, Debbie Ingalls of Coldwater; 5th, Lisa Hurd of Grass Lake; and 6th, Steve Harr of Grass Lake.

Cloverleaf, 14 and under—1st, Sharon Kropf of Chelsea; 2nd, Debbie Harrison of Chelsea; 3rd, Randy Cole of Grass Lake; 4th, Lynda Racey of Grass Lake; 5th, Shelly Hatt of Chelsea; and 6th, Laurie Racey of Grass Lake.

Cloverleaf, 15 and over—1st, Dawn Kilpatrick of Grass Lake; 2nd, Paul Carr of Ann Arbor; 3rd, LeRoy Hone of Manchester; 4th, Betty Jo Parks of Chelsea; 5th, Mike Brisbois of Stockbridge; and 6th, Bob Hone of Manchester.

Flag Race, ponies, 12 and under—1st, Danny Teachout of Stockbridge; 2nd, Colleen Lewis of Grass Lake; 3rd, Kelly Buchanan of Whitmore Lake; 4th, Marjorie Rawson of Dexter; 5th, Tom Nowatzke of Chelsea; and 6th, Beth Michalak of Manchester.

Flag Race, open—1st, Bob Hone of Manchester; 2nd, Debbie Elliott of Chelsea; 3rd, Lorilyn Bryan of

BUSINESSMEN'S LUNCHEON
Served from 11:30 to 1 Daily
MARK IV LOUNGE
PHONE 475-1951
1180 M-52 CHELSEA

COUPLES NEEDED
For Friday and Sunday
Mixed Leagues

JUNIOR LEAGUES
Start Saturday, Sept. 4 at 9 a.m.

SENIOR CITIZENS LEAGUE NOW FORMING
Bowls Tuesdays at 1 p.m.
Age 55 and up. Register Now!

CHELSEA LANES, Inc.
1180 M-52 Ph. 475-8141

BOWLING

Sunday Swingers		
Standings as of Sept. 5		
	W	L
Big Shots	7	0
Irratics	7	0
Pin Busters	7	0
4 By 4's	5	2
Heavy Rollers	2	2
All Season Comfort	5	2
S & R's	2	2
Branham CB Sales	5	2
Strangers	2	2
Gerry Rushing Services	5	5
A & C	2	5
Beaver Patrol	5	5
S & W	2	5
2 & 2's	5	5
Schulz Gang	2	5
Sourkrauts	0	7
D & U	0	7
Bottoms Up	0	7
Women, 150 and over: D. Cozzens, 155; M. Vasas, 215, 168; D. Branham, 151; P. Beeman, 162; F. Koepke, 153; E. Neibauer, 222; S. Schulz, 169; M. Henry, 155; S. Bauers, 156; C. Engler, 177; J. Anderson, 163; J. Johnston, 150.		
Women, 400 series: D. Cozzens, 412; M. Vasas, 510; F. Koepke, 474; E. Neibauer, 477; S. Bauers, 422.		
Men, 170 and over: B. Achtenberg, 179; E. Vasas, 203; T. Gaken, 200; L. Hawker, 195; A. Steinaway, 172; J. Koepke, 184; W. Brown, 201, 194; D. Cumper, 207; J. Arnold, 182; D. Anderson, 180; R. Sober, 189.		
Men, 500 series: E. Vasas, 532; L. Hawker, 512; W. Brown, 584; D. Cumper, 521; D. Anderson, 502.		
Unknowns League		
Standings as of Sept. 1		
	W	L
Shady Ladies	12	2
Fascinating "5"	10	4
Pin Dusters	9	5
Independents	6	8
Strikers	5	9
Streakers	0	14
Games of 140 and over: J. Tuttle, 147, 145; D. Bentley, 147; D. Taylor, 151; R. Beeman, 163, 154, 169; K. Greenleaf, 177, 144, 170; M. Adams, 179; J. Murphy, 156, 146; H. Horning, 149; B. Check, 148; M. Gipson, 158, 163; B. Oesterle, 150; J. Mosier, 150, 160.		
Series of 425 and over: R. Beeman, 486; M. Adams, 433; K. Greenleaf, 491; M. Gipson, 448; J. Mosier, 440.		
Saline; 4th, Dawn Kilpatrick of Grass Lake; 5th, Jamie Collins of Saline; and 6th, LeRoy Hone of Manchester.		
Pole Bending, ponies—1st, Becky Foster of Grass Lake; 2nd, Danny Teachout of Stockbridge; 3rd, Laurie Racey of Grass Lake; 4th, Kelly Buchanan of Whitmore Lake; 5th, Marge Rawson of Dexter; and 6th, Anita Roderick of Grass Lake.		
Pole Bending, open—1st, Paul Carr of Ann Arbor; 2nd, Randy Cole of Grass Lake; 3rd, Mary Fletcher of Chelsea; 4th, Laurilyn Bryan of Saline; 5th, Debbie Patterson of Manchester; and 6th, Sharon Kropf of Chelsea.		
Off and On, 14 and under—1st, Sharon Kropf of Chelsea; 2nd, Becky Foster of Grass Lake; 3rd, Roger Graves of Grass Lake; 4th, Bob Beeman of Chelsea; 5th, Laurie Racey of Grass Lake; and 6th, Leslie Buckner of Brooklyn.		
Speed and Action, 14 and under—1st, Randy Cole of Grass Lake; 2nd, Debbie Harrison of Chelsea; 3rd, Leslie Buckner of Brooklyn; 4th, LeRoy Hone of Manchester; 5th, Amy Foster of Grass Lake; and 6th, Chris Harr of Grass Lake.		
Speed and Action, 15 and over—1st, Bob Hone of Manchester; 2nd, LeRoy Hone of Manchester; 3rd, Mike Brisbois of Stockbridge; 4th, Lorilyn Bryan of Saline; 5th, Debbie Patterson of Manchester; and 6th, Debbie Elliott of Chelsea.		
Rescue Race, open—1st, Mike Brisbois of Stockbridge; 2nd, Jamie Collins of Saline; 3rd, Kay Geer of Dexter; 4th, Bob Hone of Manchester; 5th, Sharon Kropf of Chelsea; and 6th, David Parks and Jim Botsford of Chelsea.		

August Traffic Death Toll Down From Last Year

Traffic accidents in Michigan in August claimed 190 lives, which were 13 or about six percent less than the count of 203 charged to the same month last year, according to provisional figures of the State Police traffic division.

The average for the month was 204 in the last five years 1971-75. Record high for August was 254 set in 1969 while low for the month was 67 noted in the wartime year of 1943.

The August deaths brought the accumulated toll for the first eight months this year to 1,204, which was 68 or nearly six percent more than the count of 1,136 during the corresponding period last year.

Delayed deaths charged to August or earlier months this year will increase somewhat the final tolls for August and the accumulated period.

So far this year four of the eight months show increases compared to the corresponding months last year.

Please Notify Us
In Advance of
Any Change in Address

Ann Arbor's Old West Side Homes Tour Slated Sept. 19

On Sunday, Sept. 19, Ann Arbor's Old West Side Association is sponsoring its fourth annual homes tour, which will include six representative structures from this historic 19th century neighborhood.

Placed on the National Register of Historic Places in 1972, the Old West Side is an older neighborhood representative of the Midwest in architecture, history, and environment.

Settled originally by Germans, the area today reflects the sincere concern that this ethnic group had for structural integrity, careful detailing, and impeccable maintenance.

Its residents now include a diverse mix of ages and races, employed in a variety of occupations, who share an interest in the preservation of the area. The outstanding homogeneity of its buildings and landscape provides the Old West Side with a unified neighborhood environment of considerable historic and cultural value.

For its fourth tour, the Association has chosen six structures typical of the Old West Side. Included on the tour are:

1. J. D. and Leslie Eveland residence, 449 Fourth St.
2. Geoffrey and Susan Leach residence, 309 Fourth St.
3. Joyce Hannaum residence, 1203 W. Huron St.
4. Bruce Wilson and Carol Hollenshead residence, 454 Second St.
5. Barry Avedon residence, 806 Fifth St.
6. David and Karen Coe, Roy and Margaret McFarland-Bento residence, 523 W. Liberty St.

The tour will be conducted from 12 noon to 5 p.m. on Sunday, Sept. 19. Each house will be complemented by an antique automobile furnished by the Dexter Vintage Car Club. On the day of the tour, tickets will be sold for \$2.50 (senior citizens, \$1.50) at the Reorganized Church of Jesus Christ of Latter Day Saints (520 W. Jefferson). Advance tickets for \$2 are available from Mrs. Marcella Borkowski, 1113 W. Liberty, Ann Arbor, or from any of the following commercial establishments in Ann Arbor: Anderson's Paints, Appleose Health Foods, Borders Bookstore, Crown House of Gifts (Plymouth Mall), Little Professor

HUNTER SAFETY COURSE Offered By Rod & Gun Club

Chelsea's Rod and Gun Club is sponsoring a hunter safety course for boys and girls from 12 to 16 years of age beginning in the fall. Upon completion of the course, participants will receive a certificate of verification, required by state law, which will permit them to purchase their first hunting license. Also at the end of the safety sessions, the youngsters will receive a patch in recognition of their accomplishment.

To register for the hunter safety class, applicants must fill out an enrollment card available by contacting any of the following: Group leader Marvin Schiller, 475-2941; Jack & Son Barber Shop, 475-1535; George Padghan, 475-8812; or John Miller, 475-2864.

Book Center, Needlepoint Tree, Ruth Roy Interiors, Treasure Mart, Vera's Wallpaper, and Washtenaw Dairy.

Babysitting for children under 12 will be provided at the RLDS church, where refreshments will be served. While in the homes, guests are asked to refrain from smoking and to carry their shoes.

ECONOMY RISES
Government statistics have been showing continued growth in Americans' income and quickened activity in the housing industry, indicating steady growth in the general economy.

ENDANGERED PLANTS
The U. S. Fish and Wildlife Service has announced the first listing of endangered plants, including some 1,700 types found in the United States.

The Chelsea Standard, Thursday, September 9, 1976 11

The Veterans Administration has announced plans for five new national cemeteries.

You can get by with almost anything if you say it with a smile and mean no offense.

CHICKEN is still SPECIAL on TUESDAY NIGHTS at the CAPTAINS TABLE



All you can eat of Deep-fried Chicken, French Fries, Biscuits and Honey, plus a trip to our delicious Salad Bar.

\$2.95

The Captains Table Mon.-Wed. 6 a.m.-9 p.m.
8093 Main St., Dexter Thurs., Fri., 6 a.m.-10 p.m.
426-3811 Saturday, 7 a.m.-9 p.m.

**NOW SERVING
Spaghetti and Meat Ball Dinners**
Includes Salad and Roll
EACH SATURDAY EVENING

TIME'S RUNNING OUT!
THE LAST
FORD SALE
OF '76!

FORD DEALER'S CLEARANCE SALE!

PINTOS!

MAVERICKS!

GRANADAS!

Special incentives from Ford to its dealers make possible lower selling prices on selected PINTOS, MAVERICKS and GRANADAS in stock!



FORD DEALERS '76 CLEARANCE

PALMER MOTOR SALES, INC.
CHELSEA, MICHIGAN

Thefts Reported To Sheriff's Office Over Week-End

Records at the Dexter station, Washtenaw Sheriff's Office, over the week-end show three thefts.

On Sept. 4 several tapes and a stereo were removed from an unlocked car on Scio Rd. near Zeeb Rd. They were valued at \$214.

A Holstein calf was removed from the Pleasant View Farms on Trinkle and Steinbach Rds. on Sept. 5.

On Sept. 6 a 31-inch Toro lawn mower was reported stolen from the Territorial Clinic on North Territorial Rd.

Abe Lincoln Licensed

Abraham Lincoln received his license to practice law on Sept. 9, 1836. Largely self-taught, he had begun the study of law two years earlier when he was elected to the state legislature. For 20 years, Lincoln was a circuit-riding lawyer in the 8th Judicial Circuit which covered some 11,000 square miles of central Illinois. Travel, of course, was by horseback and it took him about 12 weeks to cover the circuit—one in the spring and once in the fall. One of the court-houses in which Lincoln practiced law is now among the historic buildings at Greenfield Village. It was moved to Dearborn from Logan county, Illinois.

Thinking CARPET? Think SCHNEIDER'S

Visit the wonderful world of carpeting at Schneider's, one of the area's finest, full-service carpet stores conveniently located in West Ann Arbor on Wagner Road between Jackson and Liberty.

Schneider's carries a broad selection of quality, name-brand carpets at prices consistently among the lowest in the entire area. Try us.

662-9332

OPEN MON & FRI NIGHTS 11:00 PM

SCHNEIDER CARPET CO. INC.

745 S. WAGNER RD. ANN ARBOR

ANTIQUE AUCTION

To settle the estate of the late Owen Chilson and also due to ill health of David Kelly, the Kellys are moving to Florida and will sell their entire collection. For convenience of sale articles will be moved to the Merchants' Building, Chelsea Fairgrounds, Chelsea, Mich. (South side of Chelsea, then west)

SATURDAY, SEPT. 11

Commencing at 10:00 a.m.

Walnut dropleaf table with 5 leaves.
3-drawer walnut chest with fruit wood pulls.
Spinning wheel.
Walnut highboy chest with mirror.
Pair of plate racks.
Marble top 3-drawer walnut chest.
Marble-top chest with mirror.
Fancy wicker baby stroller with umbrella.
Extra fancy wicker chair.
Brass umbrella stand.
Ceramic umbrella stand.
Brass spittoon. Walnut hall tree.
Oak hall tree with seat.
Edison cylinder record player (with horn).
Cherry commode.
Doll toys and furniture.
Cherry chest and mirror.
Primitive milk or pie safe with perforated tin door insets.
Dome top blanket chest.
Rockers. Sewing rockers.
Pine lift top commode.
Marble top buffet.
7' oak buffet.
Commode with towel bars.
Currier & Ives pictures.
Butter bowl.
Butter molds.
Coffee mill.
Tilt-top walnut table.
Round 34" cherry pedestal table.
Leaded hanging lamp.
Hand-carved settee, 1830.
Oak pie safe. RR lantern.
Pine jelly cupboard.
Walnut jelly cupboard.
Large oval mirror.
Beautiful hanging lamp, complete.
Carriage lights.
Copper teakettle.
Cast iron kettle.
Sampler collection.
Papier mache tilt-top table.
Dresser.
Choice 28" zone-with-the-wind lamp, not electrified.
Wavecrest pine desk.
Cannonballs.
Snowshoes.
Pair of hip brass bells.
Fireplace screen with needle-point.
Shaving mirror.
Oil lamps.
28 choice pieces of Imari.
10 pieces of beautiful cut glass.
18 good pieces of art glass.
Martinsville peach bowl.
11 Cloisonne pieces.
Early American glass (baboon, cameo, actress, viking).
13 pieces cut glass.
4 water pitcher and glass sets.
23 pieces pink lustre.

GUNS

LeFever 12-ga. double barrel gun.
Infid 30-06.
30-06 Remington 742, Bushnell scope.
32-20 Winchester Model 73.
Winchester Model 68 22-cal.
8x56 Austrian Steyr carbine.
7.65 Argentine Mauser Sporter.
8mm. German Mauser.
6.5 Italian Vetterli-Vitali sniper rifle.
45-cal. Martini-Henry.
303 Brit. Enfield No. 4 Mark 1.
8mm. Mauser Commission Gewehr 88.
455 Webley Pistol (permit required).
7.63 Broomhandle Mauser pistol (permit required).
69 cal. Flintlock pistol (rep.).
45 cal. percussion dueler (rep.).
44 cal. percussion derringer (rep.).
22 cal. percussion pepperbox (rep.).
4 WW I & WW 2 helmets.
German WW 2 gas masks.
Cartridge collection.
20 boxes assorted ammo.
Bayonettes, daggers, grenades.
Maple gun case.
Burglar alarm (new sonar type).

This is an exceptionally large sale consisting of over 500 articles. Articles in immaculate condition and will warrant your attendance. Nothing shown until 8:30 a.m. day of sale. Absolutely nothing sold until sale time.

Lunch on grounds.
TERMS: Cash or sufficient funds checks.

ESTATE OF OWEN CHILSON and MR. and MRS. DAVID KELLY

AUCTIONEERS: Edward L. and Brent H. Belcher, Marshall, Michigan



TOP COMMUNICATOR: Roberta L. Lawrence (with Mr. Lawrence), right, Extension Horticultural Agent, 4133 Washtenaw, Ann Arbor, is one of "America's Best Agricultural Communicators." She was honored as first-place national winner in Class VII-Newsletters, in the ninth annual Public Information Awards Program conducted by the National Association of County Agricultural Agents (NACAA) and sponsored by Amchem Products, Inc. of Ambler, Pa. She was also Michigan state winner and Northcentral (12 states) regional winner. Lawrence accepted a certificate and \$200 award from Dan Chisholm (left), manager of trade relations for Amchem, and Robert E. (Bob) Baynard, product manager with the sponsoring firm. The presentation was made recently at NACAA's 81st annual meeting in Richmond, Va. The information program is designed to recognize county agents who excel in the use of mass communications media in carrying out Co-operative Extension Service work. With seven classes over-all, it attracted 1,649 participants in 1976. In Richmond, Chisholm announced that Amchem's sponsorship will continue in 1977.

★ District Court Proceedings ★

Week of Aug. 30-Sept. 6

Arnold Heim pled guilty to charges of transporting open intoxicants in a motor vehicle. Fines and costs, \$35.

Arnold Heim pled guilty to charges of driving with a defective headlight. The case was dismissed on costs of \$10.

George Trevino pled guilty to charges of furnishing alcohol to a minor. Fines and costs, \$50.

Brian K. Wright pled guilty to charges of breaking and entering a building and committing larceny of property valued under \$100. He was referred to probation and will be sentenced Oct. 12.

Ronald Geis pled guilty to charges of malicious destruction of property valued under \$100, and to driving under the influence of liquor. He was referred to probation and will be sentenced Oct. 25.

Hollis Knickerbocker was sentenced to pay fines and costs of \$50, and to six months probation on charges of trespassing and refusing to depart.

Arthur Holdridge was sentenced to pay fines and costs of \$250, and to the Alcohol Safety Action Program on charges of impaired driving.

David A. Ball was sentenced to pay fines and costs of \$300, to the Alcohol Safety Action Program, and to 30 days in jail suspended, on charges of driving under the influence of liquor.

John Rozsypal failed to appear in court on charges of tailgating. A bench warrant was issued for his arrest.

Mark Glasscock failed to appear in court on charges of speeding. A bench warrant was issued for his arrest.

Robin VanCarvenbergh was sentenced to pay fines and costs of \$250, to the Alcohol Safety Action Program, and to one year probation on charges of driving under the influence of liquor.

Belva Allen pled guilty to charges of having an open fire. Fines and costs, \$15.

Joel C. Hoag pled guilty to charges of driving under the influence of liquor. He was referred to probation and to the Alcohol Safety Action Program. He will be sentenced Oct. 25.

Jeannette Luten pled guilty to charges of illegal possession of alcohol. She was sentenced to pay fines and costs of \$35, and to six months probation.

Robert Luten pled guilty to charges of illegal possession of alcohol. Fines and costs, \$35, suspended.

Andrew Branch pled guilty to charges of failure to have an operator's license. Fines and costs, \$35.

Andrew Branch pled guilty to charges of speeding. Fines and costs, \$25.

Kenneth George pled guilty to charges of driving under the influence of liquor. He will be sentenced Oct. 25.

Robert Lee White pled guilty to charges of possession of beer in a restricted area. Fines and costs, \$35.

Robert J. White was sentenced to pay fines and costs of \$100 on charges of indecent exposure.

Brian Hale pled guilty to charges of illegal possession of beer. Fines and costs, \$35.

Eric Richelson pled guilty to charges of operating a boat too fast. Fines and costs, \$35.

Thomas Kellar appeared before the court on a bench warrant and pled guilty to charges of failing to have his operator's license on his person. Fines and costs, \$50.

James Ferguson was found guilty on charges of assault and battery. Fines and costs, \$35.

Patricia A. Brown pled guilty to charges of committing larceny of property valued under \$100. She was sentenced to pay fines and costs of \$75, and to three days in jail, or to 20 days in jail.

Gene Burkhardt was sentenced to pay fines and costs of \$250, and to the Alcohol Safety Action Program on charges of impaired driving.

Jon Helton was sentenced to pay fines and costs of \$250, and to one year probation on charges of driving under the influence of liquor.

Anthony Kurzyuigc pled guilty to charges of speeding. Fines and costs, \$41.

Joanne Fraser pled guilty to charges of speeding. Fines and costs, \$56.

Andy Arizala pled guilty to charges of speeding. Fines and costs, \$41.

Louann Winkle pled guilty to charges of speeding. Fines and costs, \$38.

Esther Roehm pled guilty to charges of speeding. Fines and costs, \$41.

Jeffrey Wild pled guilty to charges of speeding. Fines and costs, \$35.

Steven Mallory pled guilty to charges of failing to have his operator's license and registration on his person. Fines and costs, \$22.

Kenneth Rymanowicz pled guilty to charges of driving with defective equipment. The case was dismissed on costs of \$10.

Laura Barrett pled guilty to charges of speeding. Fines and costs, \$35.

Alan Wagman pled guilty to charges of speeding. Fines and costs, \$44.

Susan Stripp pled guilty to charges of driving with defective equipment. The case was dismissed on costs of \$10.

Lena Bell pled guilty to charges of speeding. Fines and costs, \$53.

Don Thibodeau pled guilty to charges of speeding. Fines and costs, \$35.

Gerald Saren pled guilty to charges of speeding. Fines and costs, \$50.

Larry McFall pled guilty to charges of no license plates, improper registration, and improper endorsement. He was sentenced to pay fines and costs of \$20, and to 3 days on the police department work program.

Ellsworth Koebbe pled guilty to charges of impaired driving. He was sentenced to pay fines and costs of \$250.

Edward Kouba pled guilty to reduced charges of impaired driving. He will be sentenced Oct. 12.

Erwin Haab was sentenced to pay fines and costs of \$50, on charges of having a biting dog at large.

Willie McCrow pled guilty to charges of driving with license suspended. He was referred to probation and will be sentenced Oct. 26.

Robert Josephson pled guilty to charges of operating an unlicensed waste unit. He was referred to probation and will be sentenced Oct. 25.

Steven Clipchak pled guilty to charges of possession of beer in a restricted area. Fines and costs, \$35.

Charles Francisco, Jr., pled guilty to charges of careless driving. Fines and costs, \$50.

Charles Francisco, Jr., pled guilty to charges of failing to have his operator's license on his person. Fines and costs, \$30.

Charles Francisco, Jr., pled guilty to charges of no registration on his person. Fines and costs, \$30.

Charles Francisco, Jr., pled guilty to charges of no proof of insurance on his person. Fines and costs, \$30.

Benjamin Umfleet pled guilty to reduced charges of impaired driving. He will be sentenced Oct. 25.

William Winters was found guilty on charges of speeding. Fines and costs, \$57.

Belvel Boyd pled guilty to charges of careless driving. Fines and costs, \$50.

LYNN'S BEAUTY SHOP

1196 CHELSEA-MANCHESTER RD.

(across from Village Motor Sales)

475-1591

★ Complete Hair Care

★ Air Conditioned

★ Free Parking

HOURS:

Monday thru Wednesday 9 a.m.-2 p.m.
Thursday 9 a.m.-7:30 p.m.
Friday 9 a.m.-5 p.m.
Saturday 9 a.m.-12 noon



Libertarian Party Chooses New Sheriff Candidate

In a county caucus held Aug. 24 the Libertarian Party of Washtenaw county nominated a replacement candidate for the office of Sheriff. Chosen was Craig Smith of 1120 Nielsen Ct., Ann Arbor.

Smith is a 24-year-old graduate student in Pharmacology at the University of Michigan and is a Biochemistry technician at the University Hospital.

The previous candidate, Ms. Beth Stireman, has left the state. The candidate's name has been submitted to and accepted by the County Clerk's office.

Silence is an undisputed virtue.

Residential - Commercial REMODELING

FREE ESTIMATES
1b V. JENSEN and SON
LICENSED BUILDER

378 Spring Lake Drive
Chelsea, Mich.
PHONE 475-1820

Letters to the Editor

To the Editor:

Amen Mariah! Your letter put my feelings about this community in black and white. Before I started my chairmanship for certain duties for the Chelsea Bicentennial, I was very proud to be a member of the community. Now, I really know what people are really like and how they won't get involved unless their name is the biggest or they have all the attention. I heard a lot of comments about a lot of things from these uninvolved people, about how things could have been better or things that were all wrong. But, I didn't see them doing anything to help. So, as far as I'm concerned, there are a lot of people in Chelsea, with big mouths and no action. I'm really almost ashamed to be a part of this community.

I was so involved and enjoyed everything I did for my community, so no one can tell me how things should have been. I'm just sorry that for the most part, Chelsea that are too cliché, the rest of us had a great time, but we learned a lot about the community and ourselves.

I know for certain, that there are a few people in Chelsea that I gained a great friendship with and that we can work together, so for those uninvolved people, "How many friends do you have?" and "How much do you really care?" Thank you.

Your activity chairman, chairman of the community picnic, chairman of the Rocking Chair Marathon and Tasting Spree, Props Co-ordinator and 6-part member of "America '76", worker at the headquarters, and a member of the Bicentennial First Lady court. Wanda Schiller.

Francis Scott Key wrote the words to "The Star Spangled Banner" on September 14, 1814. On that day, he had journeyed to the embattled Baltimore Harbor seeking the release of a friend being held a prisoner there. Key himself was detained for 25 hours on the British warship "Supreme" while the fleet shelled nearby Ft. McHenry. At dawn, relieved to see the American flag still flying over the fort, he was inspired to write the words to the poem that later became our National Anthem. On the flag mall in front of Henry Ford Museum, a 15-star flag like the one that inspired the song flies today. It is among nine other flags which trace our banner's history from 1607.

Please Notify Us
In Advance of
Any Change in Address

Dear Editor:

On Monday, Aug. 30, 1976, the public at the voting booth, said "no" to a 1 1/2 mill increase for operational purposes for our schools. Yet the School Board at a later board meeting voted, to try and seek the approval to the millage at an election to be held Oct. 19.

We are alarmed why our youth does not take orders from anyone. When our School Board does not take "no" for an answer, why should youth? Does it not cost to hold these elections? It all adds to the taxpayer's expense. Could not some of the frills be reduced and the school live within its income same as the taxpayer? Is there any wonder the crime wave is where it is?

A Concerned Citizen.

MODEL LAW

Everyone respects the law of gravity because it always operates uniformly, impersonally—and without delay.

DEFINITION:

Backward civilization: One where the people have to make out with the original articles, not being able to afford synthetic substitutes.

Putting a few cents in the collection plate doesn't make one a philanthropist.

Tips Offered on Cut Flower Care

East Lansing—Keep flowers for your garden looking good long with these tips from Michigan State University horticulturists:

—Cut flowers in early morning or late evening rather than in the heat of the day.

—Cut flowers with a sharp knife and place them into a bucket of warm water (110 degrees F) once. Keep them in the water for about two hours.

—Arrange the flowers or cover with plastic and store for a few hours in the lower half of your refrigerator.

—Place flowers in a clean container of water with a commercial flower preservative added or use a mixture of two parts water to one part Sprite or 7-Up plus one teaspoon of liquid chlorine bleach per quart of water.

Keep fresh flowers out of draft direct sun or heat from appliances or lights. Set them in a cool spot at night.

Dexter Water To Be Shut Off Briefly Sunday

Dexter residents are reminded that the water in the village will be turned off on Sunday, Sept. 12, 7 a.m. for about two hours to repair fire hydrants in the village. All residents should plan their water needs accordingly.

Flaming Pit dinner specials:

SUNDAY - MONDAY - TUESDAY

COUNTRY STYLE CHICKEN

Salad Bar - Potato or Vegetable

All You Can Eat!

ADULTS, \$3.15 CHILDREN under 12, \$1.75

WEDNESDAY - STEAK NIGHT

7-OZ. STEAK or SHISHKABOB - \$4.45

Salad Bar - Potato or Vegetable

FRIDAY - SATURDAY

Wide Open Selections for Your Pleasure

FISH FRY THURSDAY - All You Can Eat

ADULTS, \$3.15 CHILDREN under 12, \$1.75

Try Our Alaskan King Crab

Longhorn Lounge

1750 Washtenaw, Ann Arbor 971-1500

SUMMER CAR NEEDS

WRIGHT TOOLS

ALL SETS 20% off

Q.T. MUFFLERS

\$13.95 each

VALVE - COVER

GASKET \$1.95 set

Rubber and Cork

PRE-CUT

WIRE SET \$4.45 ea.

4 and 6 cylinder

WATERLESS

HAND CLEANER

4 1/2 lb. \$2.95 ea.

WILLARD - WEATHERMASTER

GROUP 24-36 MONTH GUARANTEE

BATTERIES

\$28.45 ea.

ZIP-ZORB

FLOOR DRI

\$3.95 ea.

RELINED

BRAKE SHOES

\$10.35 set



Boyer

AUTO SUPPLY INC.

108 E. MIDDLE STREET

● FREE PARKING AT REAR ● PHONE 475-1366

Open daily
8 a.m.
to
5:30 p.m.
Saturdays
8 a.m.
to 4 p.m.



Polly's

MASTER
MARKETS

1101 M-52

CHELSEA, MICH.

(Corner M-52 and Old U.S. 12)

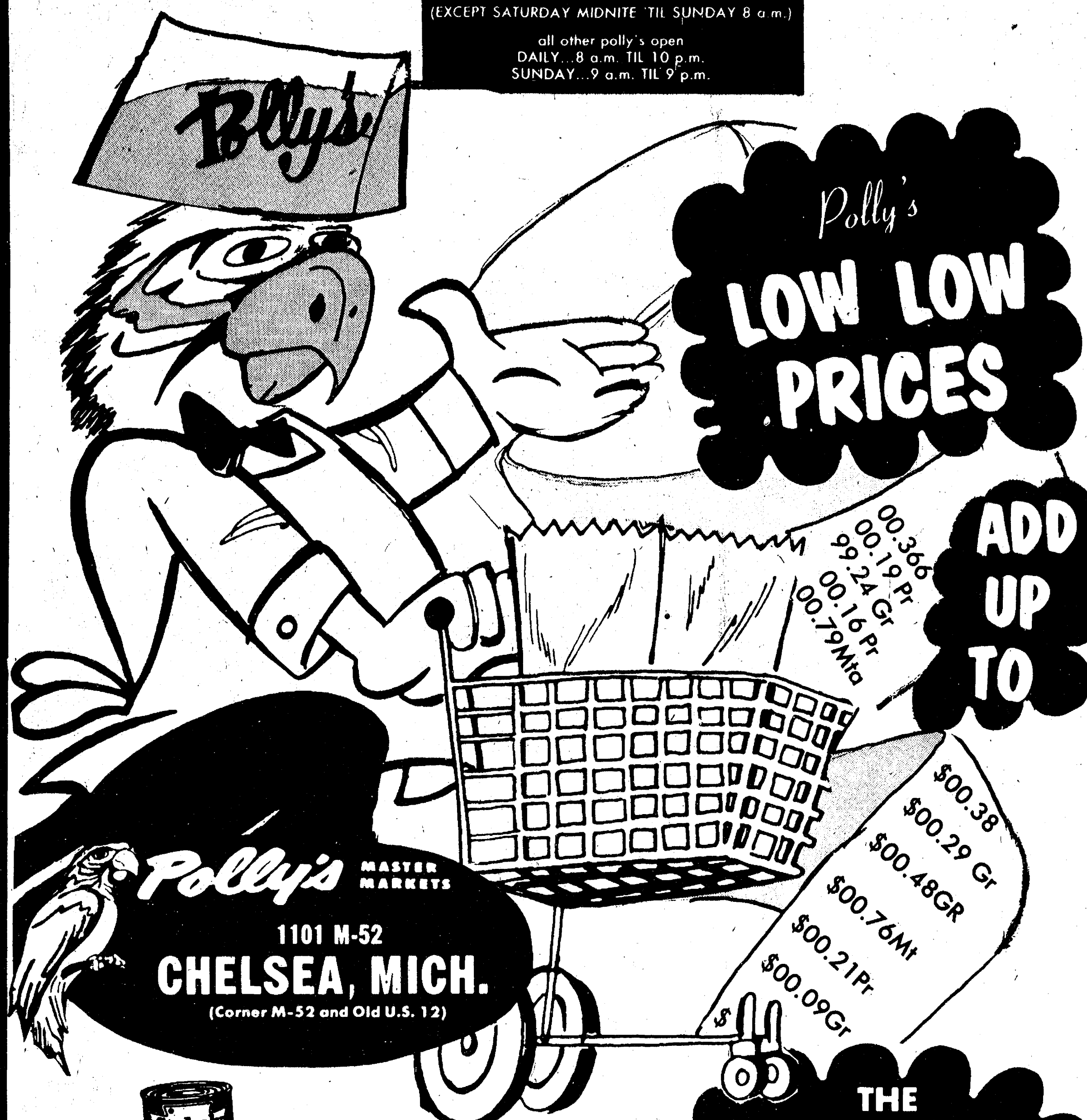
Supplement for Ann Arbor News, Chelsea Standard

get to know us...

WE CAN HELP YOU SAVE ON YOUR FOOD BILL!

- ★ **QUALITY PRODUCE**
- ★ **QUALITY MEAT**
- ★ **COLD BEER & WINE**
- ★ **LOTTERY TICKETS**
- ★ **SIDES OF BEEF**
- ★ **FRUIT BASKETS**
- ★ **DRY CLEANING**
- ★ **PHOTO PROCESSING**
- ★ **VARIETY AT LOW PRICES**

polly's on n. west ave. & spring arbor rd
OPEN 24 HOURS
 (EXCEPT SATURDAY MIDNITE 'TIL SUNDAY 8 a.m.)
 all other polly's open
 DAILY...8 a.m. 'TIL 10 p.m.
 SUNDAY...9 a.m. 'TIL 9 p.m.



Polly's MASTER MARKETS
 1101 M-52
CHELSEA, MICH.
 (Corner M-52 and Old U.S. 12)



- CUT GREEN BEANS
- FRENCH STYLE BEANS
- SHELLIE BEANS
- BAVARIAN KRAUT
- DARK RED KIDNEY BEANS
- SLICED CARROTS
- DICED BEETS
- WHOLE POTATOES

stokley sale...
4 15-oz. CANS **\$1**
24 PAK CASE

THE LOWEST TOTAL FOOD BILL!!

grocery

PEANUT BUTTER ASSORTED	18-oz.	89¢
3-DIAMOND PINEAPPLE	20-oz.	49¢
LIQUID AMMONIA	32-oz.	25¢
CHEEZ-ITS	10-oz.	59¢
PURINA CAT CHOW	4-Lb.	\$1.39
CANNED BEEFARONI	40-oz.	99¢
SPAGHETTI & MEATBALLS	40-oz.	99¢
BEEF RAVIOLI	40-oz.	99¢
MINI RAVIOLI	40-oz.	99¢
LITE BULBS	4-Pk	\$1
BATH TISSUE ASSORTED	4-Roll Pak	69¢
BRACH'S CHOCOLATES	12-oz. box	99¢

Available Now SEPTEMBER ISSUE

Disney MAGAZINE FREE WITH THE PURCHASE OF

3 21-OZ. CANS **\$1.03**

or

4 14-OZ. CANS **\$1.00**

Hurry... Limited Supply. See Our Display.

AUTUMN HAVING TIME

Life® Cereal 15-OZ. 64¢

Nature Valley® Granola Bars 10-OZ. 85¢

Blue Bonnet® Margarine . . . 1-LB. 41¢

Pepperidge Farm® Turnovers. 12-OZ. 67¢

Redeem Your Magazine Coupons Here

Clip and Save up to \$11.00 with Polly's IN-STORE and BONUS COUPONS

SAVE 48¢ with in-store coupon	ASSORTED FAYGO POP	4 32-oz. BTLES \$1	SAVE up to 40¢ with in-store coupon	BETTY CROCKER BROWNIE SUPREME	23-oz. Box 79¢
SAVE up to 68¢ with in-store coupon	EXTRA THICK & ZESTY RAGU SPAGHETTI SAUCE	32-oz. Jar 99¢	SAVE 26¢ with in-store coupon	BOUNTY PAPER TOWELS	2 Jumbo Rolls \$1
SAVE up to 40¢ with in-store coupon	PETER PAN PEANUT BUTTER	18-oz. Jar 78¢	SAVE up to 40¢ with in-store coupon	CREAMETTE LONG SPAGHETTI	2-LB. Box 69¢
SAVE 60¢ with in-store coupon	SALADA TEA BAGS	100-CT. Box 99¢	SAVE up to 40¢ with in-store coupon	SUNSHINE HYDROX COOKIES	15-oz. 59¢
SAVE 16¢ with in-store coupon	GOLD DIAL SOAP	4-Pak Regular 59¢	SAVE up to 80¢ with in-store coupon	NO-RETURN SEVEN-UP	8-Pak 10-oz. \$1.25
SAVE up to 26¢ with in-store coupon	FOR THAT EXTRA TOUCH CLOROX BLEACH	1-Gallon 69¢	SAVE 30¢ with in-store coupon	MAXWELL HOUSE 3-POUND COFFEE	can \$5.29



VALUABLE COUPON

SAVE UP TO 25¢ OFF OXYDOL DETERGENT **\$1.99**

LIMIT 1 PER COUPON PER FAMILY GOOD THRU 9-11-76

VALUABLE COUPON

SAVE UP TO 24¢ LIQUID IVORY DETERGENT **99¢**

LIMIT 1 PER COUPON PER FAMILY GOOD THRU 9-22-76

VALUABLE COUPON

SAVE UP TO 37¢ IMPERIAL MARGARINE **89¢**

LIMIT 2 PER COUPON PER FAMILY GOOD THRU 9-11-76

VALUABLE COUPON

SAVE UP TO \$1.00 IMPERIAL CUTLERY FORK **\$1.99**

LIMIT 1 PER COUPON PER FAMILY GOOD THRU 9-11-76



POLLY PRIDE QUALITY

Blade-Cut

CHUCK ROAST

59¢

SAVE 40¢ LB.

LB.

Polly's MASTER MARKETS

1101 M-52

CHELSEA, MICH.

(Corner M-52 and Old U.S. 12)



ALL SALE PRICES EFFECTIVE THRU SATURDAY, SEPT. 11, 1976

POLLY PRIDE QUALITY

Boneless **CHUCK ROAST**

89¢

LB.

POLLY PRIDE *Center Cut*

CHUCK STEAK

69¢

LB.

POLLY PRIDE QUALITY
GROUND BEEF CHUCK
89¢

LB.

3-LBS. or MORE

ECKRICH SMORGAS PAK	LB.	\$1.59
ECKRICH REGULAR or BEEF FRANKS	LB.	\$1.19
ECKRICH THICK or REGULAR SLICED BOLOGNA	LB.	\$1.39
ECKRICH SMOK-Y LINKS	10-oz. pkg.	\$1.09

POLLY PRIDE ARM-CUT

SWISS STEAK

LB.

99¢

POLLY PRIDE BONELESS

BEEF STEW

LB.

99¢

POLLY PRIDE QUALITY BEEF

SHORT RIBS

LB.

69¢

SWIFT PREMIUM SLICED

BEEF LIVER

LB.

69¢

POLLY PRIDE QUALITY

CUBE STEAK

LB.

\$1.39

AGAR

HAM PATTIES

LB.

\$1.39

FRESH HOMESTYLE

POTATO SALAD

LB.

49¢

HERRUD BEEF or REGULAR

SMOKY LINKS

10-oz. pkg.

99¢

GOVERNMENT INSPECTED		
<i>Mixed</i> FRYER PARTS	LB.	49¢
GOVERNMENT INSPECTED QUARTERED CHICKEN LEGS	LB.	59¢
GOVERNMENT INSPECTED QUARTERED CHICKEN BREAST	LB.	69¢
GOVERNMENT INSPECTED CHICKEN WINGS	LB.	59¢

POLLYS QUALITY

King Size WHITE BREAD **3** 24-oz. Loaves **\$1**

POLLY PRIDE QUALITY

SAVE \$1.00 with in store coupon

HAMBURG

\$6.90

10-LB BAG

FRESH **TURBOT FILLETS**

LB.

99¢

FRESH **SOLE FILLETS**

LB.

89¢

DIRECT FROM BOSTON

MONK FISH

LB.

\$1.99

<i>Flavor Crisp</i> BROASTED CHICKEN	
21 PIECE TUB	\$3.99
12 PIECE TUB	\$2.49
9 PIECE BOX	\$1.89

AVAILABLE AT SPRING ARBOR RD. ONLY ALLOW 20 MINUTE PREPARATION CALL 787-5228


FARMER PEET

SMOKED PICNICS

79¢

LB.

<p>for the millions who should not take aspirin...</p> <p>TYLENOL 100 CT 99¢</p> <p>With in store coupon</p>	<p>WHITE RAIN SHAMPOO 8 oz. - \$1.10 Value 88¢</p> <p>HAIRSPRAY 11 oz. - \$1.65 Value Your Choice</p> <p>NON-AEROSOL HAIRSPRAY 8 oz. - \$1.69 Value 99¢</p>
<p>CLAIROL FINAL NET Regular & Unscented 4" 89¢</p>	<p>VASELINE INTENSIVE CARE LOTION Regular & Herbal 10 ounce 99¢ \$1.69 Value</p> <p>WIPE 'N DIPES 50 Wipes 93¢ \$1.09 Value</p>
<p>BAN ROLL-ON 1 oz. - \$1.03 Value 86¢</p> <p>Sinutab Sinus Spray 1/2 oz. - \$1.79 Value \$1.49</p>	<p>CORRECTOL 30's - \$1.59 Value \$1.37</p> <p>ARRID ROLL-ON DEODORANT \$1.16 \$1.41 Value</p>
<p>JOHNSON'S BABY LOTION 9 oz. \$1.43 \$1.94 Value</p>	<p>MONSTER VITAMINS 60 Tablets Regular \$1.26 With Iron \$1.46</p> <p>the dry look Regular & Ex. Hold 7 oz. - \$1.69 Value \$1.41</p>
<p>EXCEDRIN 100's - \$2.09 Value \$1.63</p>	<p>Schick SuperII 15 Cartridge Economy Pack \$3.89 Value \$3.11</p>
<p>CONGESPIN TABLETS 36's - 89¢ Value 74¢</p> <p>COUGH SYRUP 3 oz. - \$1.49 Value \$1.23</p>	<p>SUNSHINE HARVEST SHAMPOO 20c Off Label 8 oz. - \$1.85 Value \$1.43</p>
<p>AIM TOOTHPASTE 15c Off Label</p> <p>Aim 6.4 oz. Tube 88¢ \$1.45 Value</p>	<p>CLEARASIL Regular & Vanishing Formula 1.2 ounce \$1.53</p>
	<p>EVEREADY FLASHLIGHT BATTERIES Size C & D Card of 2 77¢</p>



Polly's MASTER MARKETS
1101 M-52
CHELSEA, MICH.
(Corner M-52 and Old U.S. 12)

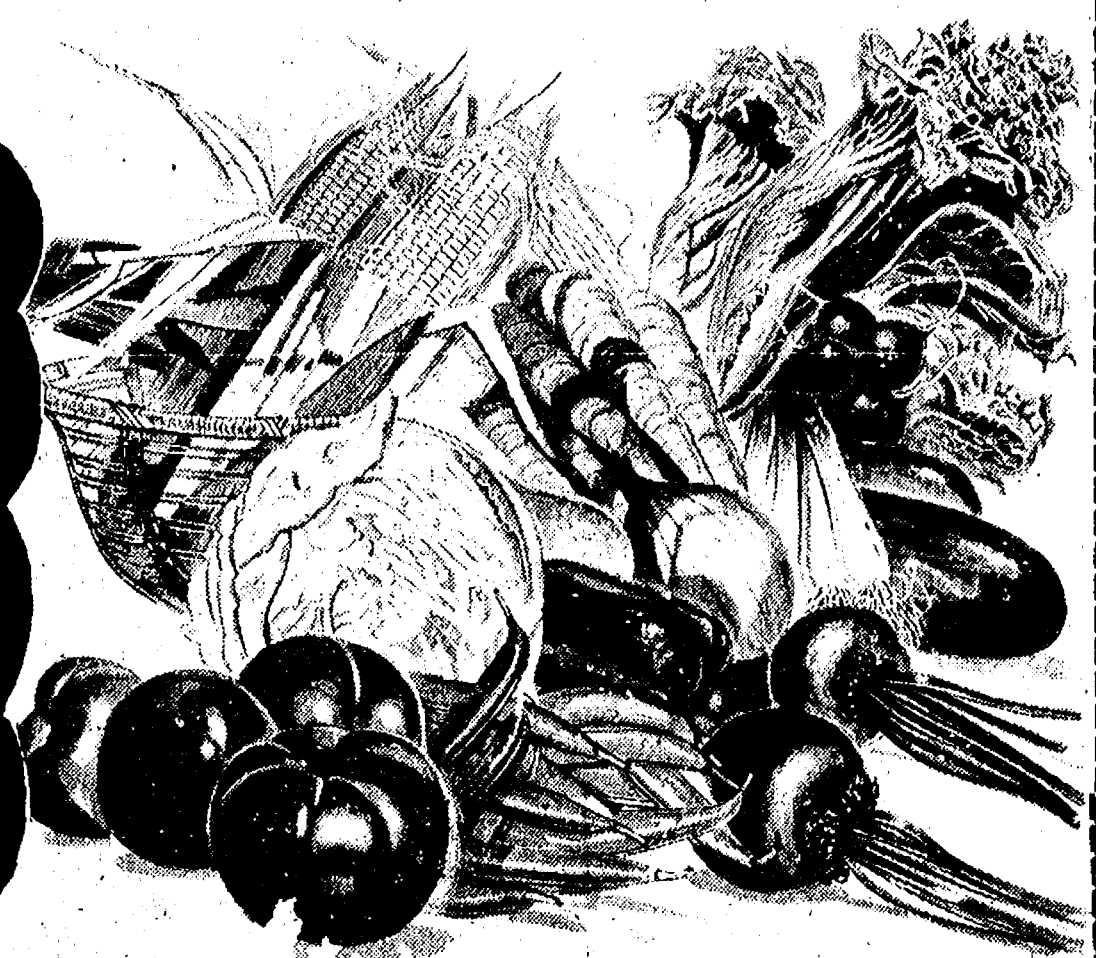
Polly's **LOW, LOW PRICES**

AD UP TO

the LOWEST TOTAL FOOD BILL

produce

U.S. NO. 1
PAULA RED
APPLES
69¢
3-LB. BAG
Great for Cooking or Eating!!



- WESTERN **BARTLETT PEARS** 3 LBS. FOR **\$1**
CELLO-PAK
- RED RADISHES** 2 1-LB. PKS. **49¢**
HOMEGROWN
- GREEN CABBAGE** LB. **12¢**
FRESH
- SNO-WHITE MUSHROOMS** LB. **99¢**

5 or 6 SIZE
HONEYDEW MELONS
69¢

138 SIZE
CALIFORNIA
ORANGES
18 for 99¢

- WASHINGTON PURPLE **PRUNE PLUMS**
4 LBS. FOR \$1

frozen fruit....

- SLICED **STRAWBERRIES** 30-LB. **\$17⁹⁹**
- FROZEN **BLUEBERRIES** 20-LB. **\$17⁹⁹**
- R.S.P. **CHERRIES** 30-LB. **\$14⁹⁹**
(WHILE SUPPLY LASTS)

frozen

NEW! **ORANGE PLUS** BIRDS EYE
2 12 OZ. CANS \$1
SAVE UP TO 72¢ WITH IN-STORE COUPON

- QUEEN of SCOT **CUT CORN** 20-OZ. **49¢**
- QUEEN of SCOT **MIXED VEGETABLES** 20-OZ. **49¢**
- GORTON BATTERED **FISH STICKS** 14-OZ. **\$1.49**
- SCOT LAD **WAFFLES** 5 6-OZ. PAKS **\$1**
- FAMILY TREAT **GLACIER POPS** 24-PK **99¢**

BORDEN **GLACIER CLUB ICE CREAM**
1/2-Gallon 87¢

dairy

imperial margarine **2 1-LB. QTRS. 89¢**
WITH COUPON IN THIS AD

New **Everyday Low Price!**
POLLY'S HOMOGENIZED **MILK**
2 1/2-GALLON CARTONS \$1.39

SEALTEST **COTTAGE CHEESE**
24-OZ. 79¢

snack bar

LOCATED AT POLLY'S ON SPRING ARBOR RD.

- MONDAY...Homemade Goulash and Tossed Salad - 99¢**
- TUESDAY...Chip Beef on Toast & Salad - 99¢**
- WEDNESDAY...Homemade Meat Loaf, Mashed Potatoes & Cole Slaw - \$1.29**
- THURSDAY...Polly Broasted Chicken, Mashed Potatoes & Cole Slaw - \$1.29**
- FRIDAY...Macaroni & Cheese with Tossed Salad - 99¢**
- SATURDAY...Sloppy Joes, F. Fries & Cole Slaw - 99¢**

WEEKLY FEATURE!! ICE CREAM CONES Each **10¢**

bakery

FRESH FROM POLLY'S ALPINE BAKEHAUS!

- FRESH **BLACKBERRY PIE** 8-INCH **\$1 19**
- FRESH **CHOCOLATE CHIP COOKIES** Doz. **79¢**
- FRESH **CREME CURLS** 6-PK **79¢**
- FRESH **GARLIC BREAD** 1-LB. LOAF **69¢**